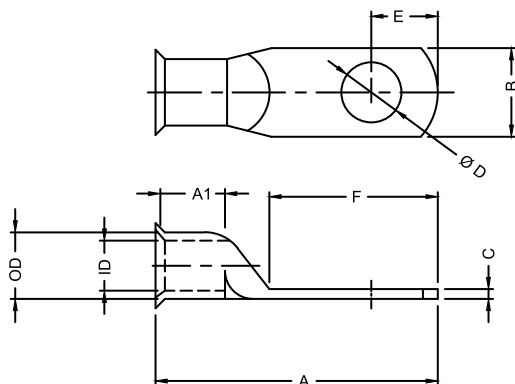


COPPER COMPRESSION LUGS

COPPER LUGS

- * Manufactured seamless pure electrolytic grade copper.
- * Used for crimp or solder style.
- * For copper conductors only.
- * Suitable for application upto 35KVA .
- * Rated 600 volts / 194° F.
- * UL 486A listed.



*See table for dimension.

- 100% pure copper for superior conductivity
- Unplated
- Flared ends for easy wire insertion
- Closed-type
- Available in packs of 20, 4* & 2

***8 Awg Only**

DIMENSION IN INCHES

PART NO. 2 PACK	PART NO. 20 PACK	CONDUCTOR GAUGE (AWG)	STUD SIZE	A	A1	B	C	E	F
662638*	762638	8	1/4	1.26	0.55	0.46	0.07	0.34	0.68
662551*	762551	8	10	1.26	0.55	0.46	0.07	0.34	0.68
662639*	762639	8	5/16	1.26	0.55	0.46	0.07	0.34	0.68
662640*	762640	8	3/8	1.39	0.55	0.46	0.07	0.34	0.68
662548	762548	6	1/4	1.29	0.55	0.64	0.07	0.3	0.7
662550	762550	6	5/16	1.29	0.55	0.54	0.07	0.3	0.7
662549	762549	6	3/8	1.29	0.55	0.54	0.07	0.3	0.7
662641	762641	6	1/2	1.68	0.55	0.64	0.07	0.39	0.81
662441	762441	4	1/4	1.6	0.58	0.54	0.07	0.29	0.8
662442	762442	4	10	1.6	0.58	0.54	0.07	0.29	0.8
662443	762443	4	5/16	1.6	0.58	0.54	0.07	0.29	0.8
662547	762547	4	3/8	1.6	0.58	0.57	0.07	0.29	0.8
662642	762642	2	1/4	1.73	0.67	0.65	0.07	0.33	0.77
662444	762444	2	5/16	1.73	0.67	0.65	0.07	0.33	0.77
662445	762445	2	3/8	1.73	0.67	0.65	0.07	0.33	0.77
662643	762643	1	1/4	0.07	0.73	0.67	0.09	0.34	0.69
662545	762545	1	3/8	0.07	0.73	0.67	0.09	0.34	0.69
662546	762546	1	1/2	0.07	0.73	0.67	0.09	0.34	0.69
662544	762544	1/0	3/8	1.91	0.76	0.73	0.09	0.4	0.84
662543	762543	1/0	1/2	1.91	0.76	0.73	0.09	0.4	0.84
662541	762541	2/0	3/8	2.2	0.85	0.82	0.1	0.44	0.96
662540	762540	2/0	1/2	2.2	0.85	0.82	0.1	0.44	0.96
662542	762542	3/0	3/8	2.25	0.85	0.9	0.11	0.49	0.99
662539	762539	3/0	1/2	2.25	0.85	0.9	0.11	0.49	0.99
662538	762538	4/0	3/8	2.61	0.91	1.04	0.11	0.53	1.12
662537	762537	4/0	1/2	2.61	0.91	1.04	0.11	0.53	1.12