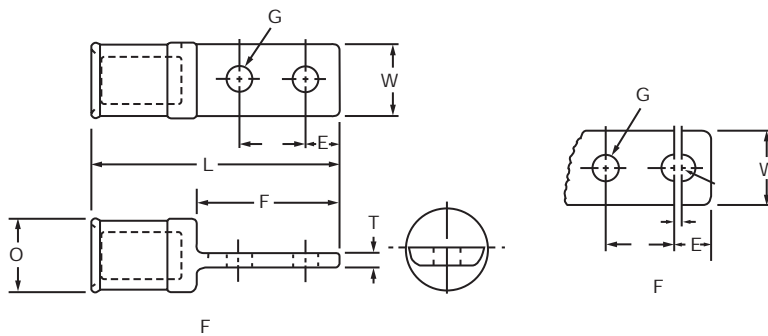


Heavy Duty Two Hole Cast Copper Lugs – Center Formed for Diesel Locomotive Cable (DLO)

Type LL-D-CF

- Heavy duty cast copper compression lugs for traction motor applications
- Cast out of pure copper alloy for high conductivity
- Center formed design maintains conductor alignment with mounting surface
- Electro-tin plated for corrosion resistance
- Suitable for installation with existing hydraulic crimping tools



CATALOG NUMBER	FIG. NO.	DLO CONDUCTOR SIZE	G BOLT SIZE	APPROXIMATE DIMENSIONS (IN.)							T&B DIE INDEX NO.
				L	F	D	E	O	W	T	
LL47428DCF	1	133/24	5/16	2.94	1.88	.88	.44	.66	.59	.20	50
LL47271DCF	1	150/24	5/16	2.94	1.88	.88	.44	.66	.59	.20	50
LL44385DCF	1	225/24	5/16	3.00	1.88	.88	.44	.72	.69	.20	54
LL50545DCF	1	275/24	5/16	3.00	1.88	.88	.44	.72	.69	.20	54
LL44075DCF	1	325/24	5/16	3.00	1.88	.88	.44	.72	.69	.20	54
LL41155DCF	1	375/24	5/16	3.13	2.00	.88	.44	.78	.78	.20	60
LL41156DCF	1	450/24	5/16	3.13	2.00	.88	.44	.78	.78	.20	60
LL36996DCF	1	550/24	5/16	3.19	1.88	.88	.44	1.05	.94	.20	76
LL42596DCF	1	650/24	5/16	3.19	1.88	.88	.44	1.05	.94	.20	76
LL41153DCF	1	775/24	5/16	3.19	1.88	.88	.44	1.05	.94	.20	76
LL44131DCF	1	925/24	3/8	3.75	2.06	1.00	.44	1.19	1.13	.38	87
LL44573DCF	1	1100/24	3/8	3.75	2.06	1.00	.44	1.34	1.34	.38	99
LL44096DCF	1	1325/24	3/8	3.75	2.06	1.00	.44	1.38	1.34	.38	107
LL43606DCF	2	1325/24	3/8	3.75	2.06	.88-1.00	.56	1.38	1.34	.38	107
LL50429DCF	1	1600/24	3/8	3.75	2.06	1.00	.44	1.38	1.34	.38	107
LL41154DCF	2	1925/24	3/8	3.81	2.06	.88-1.00	.56	1.44	1.44	.38	112
LL42684DCF	1	2300/24	3/8	4.28	2.13	1.00	.44	1.66	1.59	.38	130

For blank pad, add suffix "-U" to catalog number

Above terminals can be installed with the following T&B Tooling: 12 ton head (13642), 20 ton head (21920), and 40 ton head (21940)

T&B is a registered trademark of its respective company