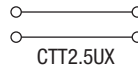
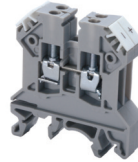


**CTT2.5UK/J/T/E**



**HIGHLIGHTS**

**FEATURES**

- Thermocouple terminal blocks are used to extend thermocouple compensating lines in measuring circuits
- The current bar of the terminal block is made of the same material as the thermocouple wire (As per EN 60584/DINEN 60584)
- No loss of potential at the connection points
- Available types:
  - K Type** - Chromel (NiCr), Alumel (Ni)
  - J Type** - Iron (Fe), Constantan (CuNi)
  - T Type** - Copper (Cu), Constantan (CuNi)
  - E Type** - Chromel (NiCr), Constantan (CuNi)

**APPLICATIONS**

- Measurement applications

**Dimensions & Weight**

Width	<b>10 mm</b>	
Length	43 mm	
Height w DIN Rail	35 x 7.5 mm 35 x 15 mm	46.2 mm 53.7 mm
Weight per piece	12.4 g	

**Technical Data/Ratings**

Approvals		
Wire Size (solid / stranded)	22-14 AWG	0.2-2.5 mm <sup>2</sup>
Voltage Rating	1000 V AC/DC	
Current Rating	10 A	
Torque	7 lb-in / 0.4 Nm	
Insulation Material	Polyamide 66	

**Installation Instructions**

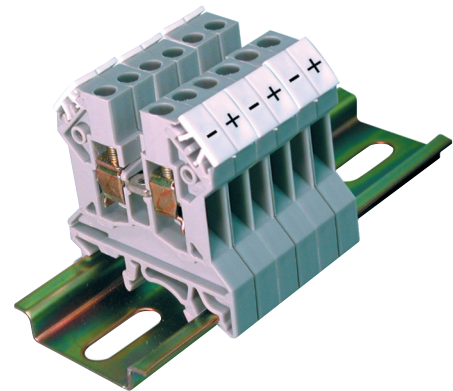
Wire Stripping Length		8 mm
Screwdriver		Flat Head 0.5 x 3 mm

**Terminal Blocks**

Grey U Type J Type T Type G Type	Cat. No.  CTT2.5UK CTT2.5UJ CTT2.5UT CTT2.5UG
--	--

**Accessories**

End Plate		EP2.5/4UN
Partition Plate		PP2.5/4UN
DIN Rail		2511120 CA701-15/S 2511160
End Stop		CA702 CA802
Marking Tag		



**Typical Temperature Measuring Circuit**

