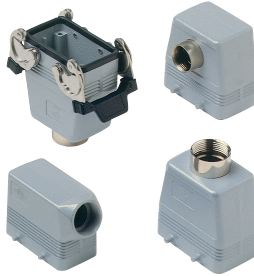




# HEAVY DUTY MULTIPOLE CONNECTORS

## Hoods

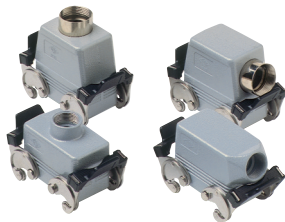


### Series E 10 poles + $\frac{1}{2}$

Pg	Part #	Pg	NPT Part #	NPT	Hoods	OEM Part #
	ESEP10D4	16	ESEP10D10	1/2"	four pegs, side entry	CHO 10
	ESTP10D5	21	ESTP10D11	3/4"	four pegs, side entry, high construction	CAO 10.21
	ESTP10D6	29	ESTP10D12	1"	four pegs, side entry, high construction	CAO 10.29
	ETEP10D4	16	ETEP10D10	1/2"	four pegs, top entry	CHV 10
	ETTP10D5	21	ETTP10D11	3/4"	four pegs, top entry, high construction	CAV 10.21
	ETTP10D6	29	ETTP10D12	1"	four pegs, top entry, high construction	CAV 10.29
	EFEP10D4*	16	EFEP10D10*	1/2"	four pegs, front entry, high construction	CAF 10
	ECC10D4	16	ECC10D10	1/2"	double levers, top entry, cable coupler	CHV 10 G
	ECC10D5	21	ECC10D11	3/4"	double levers, top entry, cable coupler, high construction	CAV 10 G
	ECC10D6	29	ECC10D12	1"	double levers, top entry, cable coupler, high construction	CAV 10 G29

	ESEP10S4	16	ESEP10S10	1/2"	two pegs, side entry	CHO 10 L
	ESTP10S5	21	ESTP10S11	3/4"	two pegs, side entry, high construction	CAO 10 L21
	ESTP10S6	29	ESTP10S12	1"	two pegs, side entry, high construction	CAO 10 L29
	ETEP10S4	16	ETEP10S10	1/2"	two pegs, top entry	CHV 10 L
	ETTP10S5	21	ETTP10S11	3/4"	two pegs, top entry, high construction	CAV 10 L21
	ETTP10S6	29	ETTP10S12	1"	two pegs, top entry, high construction	CAV 10 L29
	ECC10S4	16	ECC10S10	1/2"	single lever, top entry, cable coupler	CHV 10 LG
	ECC10S5	21	ECC10S11	3/4"	single lever, top entry, cable coupler, high construction	CAV 10 LG21
	ECC10S6	29	ECC10S12	1"	single lever, top entry, cable coupler, high construction	CAV 10 LG29

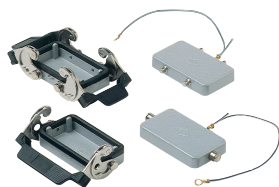
\* special order, consult factory for delivery



### Series E 10 poles + $\frac{1}{2}$

Pg	Part #	Pg	NPT Part #	NPT	Hoods	OEM Part #
	ESEL10D4	16	ESEL10D10	1/2"	double levers, side entry	CHO 10 X
	ESTL10D5	21	ESTL10D11	3/4"	double levers, side entry, high construction	CAO 10 X
	ESTL10D6	29	ESTL10D12	1"	double levers, side entry, high construction	CAO 10 X29
	ETEL10D4	16	ETEL10D10	1/2"	double levers, top entry	CHV 10 X
	ETTL10D5	21	ETTL10D11	3/4"	double levers, top entry, high construction	CAV 10 X
	ETTL10D6	29	ETTL10D12	1"	double levers, top entry, high construction	CAV 10 X29

## Covers



### Series E 10 poles + $\frac{1}{2}$

Part #	Covers	OEM Part #
EP10DL	four pegs (for housings with double levers)	CHC 10
EP10SL	two pegs (for housings with single lever)	CHC 10 L
EL10DL	double levers (for hoods with four pegs)	CHC 10 G
EL10SL	single lever (for hoods with two pegs)	CHC 10 LG

CH - CA and MH - MA enclosures

size "57.27" standard version



hoods with 4 pegs



hoods with 2 pegs



insert centre distance:  
57 x 27 mm

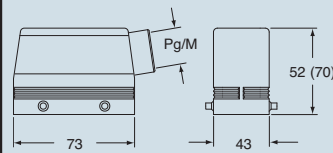
description	hoods with 4 pegs		hoods with 2 pegs	
	part No.	entry Pg	part No.	entry M
with pegs, side entry	<b>CHO 10</b>	16	<b>MHO 10.20</b>	20
with pegs, side entry			<b>MHO 10.25</b>	25
with pegs, side entry, high construction	<b>CAO 10.21</b>	21	<b>MAO 10.32</b>	32
with pegs, side entry, high construction	<b>CAO 10.29</b>	29	<b>MAO 10.40</b>	40
with pegs, top entry	<b>CHV 10</b>	16	<b>MHV 10.20 **</b>	20
with pegs, top entry			<b>MHV 10.25</b>	25
with pegs, top entry, high construction	<b>CAV 10.21</b>	21	<b>MAV 10.32</b>	32
with pegs, top entry, high construction	<b>CAV 10.29</b>	29	<b>MAV 10.40</b>	40
with pegs, frontal entry, high construction	<b>CAF 10</b>	16	<b>MAF 10.20</b>	20
with pegs, frontal entry, high constr., without adaptor *	<b>CFF 10</b>	16	<b>MFF 10.20</b>	20

\* enclosure without adaptor, threaded on the body, to be used only with a complete cable clamp.

\*\* can only be used with a complete cable clamp (to be purchased separately)

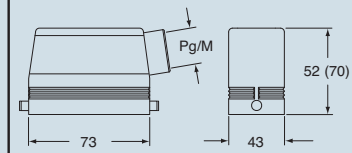
dimensions in mm

CHO (CAO) and MHO (MAO)

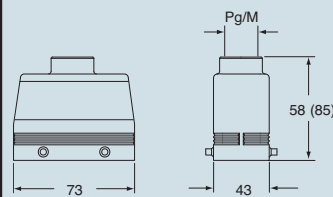


dimensions in mm

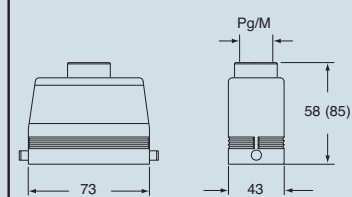
CHO L (CAO L) and MHO L (MAO L)



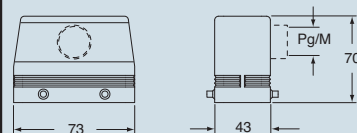
CHV (CAV) and MHV (MAV)



CHV L (CAV L) and MHV L (MAV L)



CAF/CFF and MAF/MFF



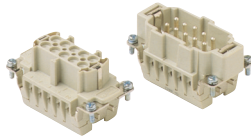
**CRUS**® Type 4/4X/12

dimensions shown are not binding and may be changed without notice



# HEAVY DUTY MULTIPOLE CONNECTORS

## Inserts

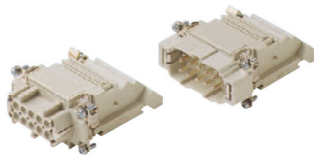


### Series E 10 poles + $\frac{1}{2}$ 16A max - 600V

Part #	Screw Terminal with wire protection	OEM Part #
E10RS	female inserts	CNEF 10 T
E10PS	male inserts	CNEM 10 T

Part #	Cage Clamp	OEM Part #
E10RG	female inserts	CSEF 10
E10PG	male inserts	CSEM 10

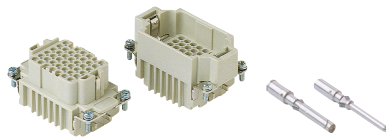
Wire conductor range: 20 ÷ 12 AWG



### Series E-TB 10 poles + $\frac{1}{2}$ 16A max - 600V

Part #	Terminal Block Inserts Screw Terminal Connection
E10RS-TBL	female inserts with female contacts (left mounting)
E10RS-TBR	female inserts with female contacts (right mounting)
E10PS-TBL	male inserts with male contacts (left mounting)
E10PS-TBR	male inserts with male contacts (right mounting)

Wire conductor range: 18 ÷ 14 AWG

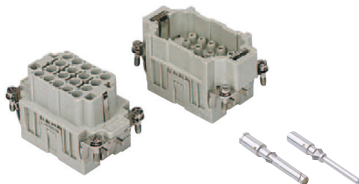


### Series DD 42 poles + $\frac{1}{2}$ 10A max - 600V

Part #	Crimp Terminal	OEM Part #
DD42RC	female inserts	CDDF 42
DD42PC	male inserts	CDDM 42

Wire conductor range: 22 ÷ 14 AWG

10A Crimp Contacts must be ordered separately

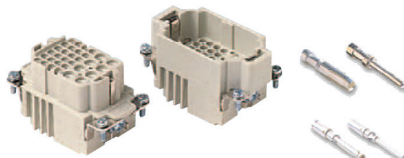


### Series EQ 18 poles + $\frac{1}{2}$ 16A max - 600V

Part #	Inserts, Crimp Connections
EQ18RC	female inserts for female contacts
EQ18PC	male inserts for male contacts

Wire conductor range: 20 ÷ 12 AWG

16A Crimp Contacts must be ordered separately, see page B-28



### Series EA 8 poles (16A max-400V) + 24 poles (10A max-250V) + $\frac{1}{2}$

Part #	Inserts, Crimp Connections
EA8/24RC	female inserts for female contacts
EA8/24PC	male inserts for male contacts

Wire conductor range: 10A/22 ÷ 14 AWG, 16A/20 ÷ 12 AWG

16A and 10A Crimp Contacts must be ordered separately

# HEAVY DUTY MULTIPOLE CONNECTORS



## Bases



### Series E 10 poles + $\frac{1}{2}$

Part #	Terminal Block Inserts	Screw Terminal Connection	OEM Part #
EPML10D	double levers		CHI 10
EPMP10DC	four pegs and cover		CHI 10 CS
EPML10S	single lever		CHI 10 L
EPML10SC	single lever and cover		CHI 10 LS

Pg Part #	Pg	NPT Part #	NPT	Surface Mounting Housings	OEM Part #
ES1L10D4	16	ES1L10D10	1/2"	double levers, single port	CHP 10
ES2L10D4	16 x 2	ES2L10D10	1/2" x 2	double levers, double port	CHP 10.2
ES1L10D5	21	ES1L10D11	3/4"	double levers, single port, high construction	CAP 10.21
ES2L10D5	21 x 2	ES2L10D11	3/4" x 2	double levers, double port, high construction	CAP 10.221
ES1L10D6	29	ES1L10D12	1"	double levers, single port, high construction	CAP 10.29
ES2L10D6	29 x 2	ES2L10D12	1" x 2	double levers, double port, high construction	CAP 10.229
ES1P10DC4	16	ES1P10DC10	1/2"	four pegs and cover, single port	CHP 10 CS
ES2P10DC4	16 x 2	ES2P10DC10	1/2" x 2	four pegs and cover, double port	CHP 10 CS2
ES1P10DC5	21	ES1P10DC11	3/4"	four pegs and cover, single port, high construction	CAP 10 CS
ES2P10DC5	21 x 2	ES2P10DC11	3/4" x 2	four pegs and cover, double port, high construction	CAP 10 CS2
ES1P10DC6	29	ES1P10DC12	1"	four pegs and cover, single port, high construction	CAP 10 CS29
ES2P10DC6	29 x 2	ES2P10DC12	1" x 2	four pegs and cover, double port, high construction	CAP 10 CS229



### Series E 10 poles + $\frac{1}{2}$

Pg Part #	Pg	NPT Part #	NPT	Surface Mounting Housings	OEM Part #
ES1L10S4	16	ES1L10S10	1/2"	single lever, single port	CHP 10 L
ES2L10S4	16 x 2	ES2L10S10	1/2" x 2	single lever, double port	CHP 10 L2
ES1L10S5	21	ES1L10S11	3/4"	single lever, single port, high construction	CAP 10 L
ES2L10S5	21 x 2	ES2L10S11	3/4" x 2	single lever, double port, high construction	CAP 10 L2
ES1L10S6	29	ES1L10S12	1"	single lever, single port, high construction	CAP 10 L29
ES2L10S6	29 x 2	ES2L10S12	1" x 2	single lever, double port, high construction	CAP 10 L229
ES1L10SC4	16	ES1L10SC10	1/2"	single lever and cover, single port	CHP 10 LS
ES2L10SC4	16 x 2	ES2L10SC10	1/2" x 2	single lever and cover, double port	CHP 10 LS2
ES1L10SC5	21	ES1P10SC11	3/4"	single lever and cover, single port, high construction	CAP 10 LS
ES2L10SC5	21 x 2	ES2P10SC11	3/4" x 2	single lever and cover, double port, high construction	CAP 10 LS2
ES1L10SC6	29	ES1P10SC12	1"	single lever and cover, single port, high construction	CAP 10 LS29
ES2L10SC6	29 x 2	ES2P10SC12	1" x 2	single lever and cover, double port, high construction	CAP 10 LS229

# GENERAL FEATURES OF MULTIPOLE CONNECTORS FOR INDUSTRIAL PURPOSES

- 1 Threaded cable passage in various Pg diameters, metric diameters in accordance with EN 60423 and "NPT" diameters, for cable entry devices in accordance with EN 50262, may be located vertically, horizontally or frontally.
- 2 Heavy duty enclosures in die-cast aluminium alloy or self-extinguishing thermoplastic (A-03 series).  
Wall mounting or bulkhead housings and hoods are available, with or without fixed covers or with mobile protection covers.
- 3 Metallic enclosures with a coated finish of epoxy-polyester with high resistance to mechanical stress and external agents. Enclosures used with temperatures of up to 180°C and in aggressive environments

are treated with special coatings. Where electromagnetic compatibility is necessary: EMC enclosures with high conductivity and high corrosion resistance surface treatment.

- 4 Inserts in self-extinguishing thermoplastic material reinforced with glass fibres, UL approved, with a limit working temperature from -40°C to +125°C. For some series, inserts in PPS (polyphenylene sulphide) may be requested for special uses with temperatures of up to 180°C.
- 5 Polarized inserts with asymmetric guide rails for preventing incorrect coupling. The inserts have a mechanical duration equal to or over 500 coupling cycles.

- 6 Inserts manufactured in conformity with the DIN VDE 0627 standard and are certified and identified with the UL and CSA marks.

- 7 Special seal gaskets in vinyl nitrile elastomer or fluoro elastomer (on enclosures for use with maximum temperatures of 180°C and for aggressive environments), in antiaging, oil-resistant, fuel-resistant, together with the cable entry devices (not supplied) provide an IP66 degree of protection for coupled connectors.

Special conductive seals for EMC enclosures.

- 8 Stainless steel closure levers and springs guarantee a perfect closure and sealing.

- 9 Locking device available in two versions, simple (with one lever), or double (with two levers).

- 10 Various types of handles are available: in self-extinguishing, thermoplastic material reinforced with glass fibres; in die-cast aluminium (for special use with temperatures of up to 180°C); monoblock stainless steel handles (A-03 enclosures and for special uses with temperatures of up to 180°C).

- 11 Unlosable insert fastening screws, with antiloosening flexible washer.

- 12 Contacts position identified with numbers or codes on both sides of each insert and laser printed or moulded.

- 13 Contacts in silver or gold-plated brass (special order) with connections to the conductors made via unlosable unloosened screws, spring terminal, crimping or incorporated 45° terminal block connectors (with screw or spring terminal).

- 14 Earth terminal protection with wide contact surface.

- 15 Pegs and levers supplied with anti-friction rings that facilitate closure and limit wear and tear.

- 16 CE marking attesting conformity to the requirements of the Low Voltage directive 73/23/EEC and its modification 93/68/EEC.

