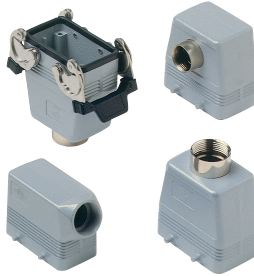




# HEAVY DUTY MULTIPOLE CONNECTORS

## Hoods

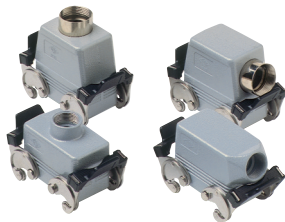


### Series E 10 poles + ⚡

| Pg | Part #           | Pg | NPT Part #        | NPT  | Hoods                                                      | OEM Part #        |
|----|------------------|----|-------------------|------|------------------------------------------------------------|-------------------|
|    | <b>ESEP10D4</b>  | 16 | <b>ESEP10D10</b>  | 1/2" | four pegs, side entry                                      | <b>CHO 10</b>     |
|    | <b>ESTP10D5</b>  | 21 | <b>ESTP10D11</b>  | 3/4" | four pegs, side entry, high construction                   | <b>CAO 10.21</b>  |
|    | <b>ESTP10D6</b>  | 29 | <b>ESTP10D12</b>  | 1"   | four pegs, side entry, high construction                   | <b>CAO 10.29</b>  |
|    | <b>ETEP10D4</b>  | 16 | <b>ETEP10D10</b>  | 1/2" | four pegs, top entry                                       | <b>CHV 10</b>     |
|    | <b>ETTP10D5</b>  | 21 | <b>ETTP10D11</b>  | 3/4" | four pegs, top entry, high construction                    | <b>CAV 10.21</b>  |
|    | <b>ETTP10D6</b>  | 29 | <b>ETTP10D12</b>  | 1"   | four pegs, top entry, high construction                    | <b>CAV 10.29</b>  |
|    | <b>EFEP10D4*</b> | 16 | <b>EFEP10D10*</b> | 1/2" | four pegs, front entry, high construction                  | <b>CAF 10</b>     |
|    | <b>ECC10D4</b>   | 16 | <b>ECC10D10</b>   | 1/2" | double levers, top entry, cable coupler                    | <b>CHV 10 G</b>   |
|    | <b>ECC10D5</b>   | 21 | <b>ECC10D11</b>   | 3/4" | double levers, top entry, cable coupler, high construction | <b>CAV 10 G</b>   |
|    | <b>ECC10D6</b>   | 29 | <b>ECC10D12</b>   | 1"   | double levers, top entry, cable coupler, high construction | <b>CAV 10 G29</b> |

|  |                 |    |                  |      |                                                           |                    |
|--|-----------------|----|------------------|------|-----------------------------------------------------------|--------------------|
|  | <b>ESEP10S4</b> | 16 | <b>ESEP10S10</b> | 1/2" | two pegs, side entry                                      | <b>CHO 10 L</b>    |
|  | <b>ESTP10S5</b> | 21 | <b>ESTP10S11</b> | 3/4" | two pegs, side entry, high construction                   | <b>CAO 10 L21</b>  |
|  | <b>ESTP10S6</b> | 29 | <b>ESTP10S12</b> | 1"   | two pegs, side entry, high construction                   | <b>CAO 10 L29</b>  |
|  | <b>ETEP10S4</b> | 16 | <b>ETEP10S10</b> | 1/2" | two pegs, top entry                                       | <b>CHV 10 L</b>    |
|  | <b>ETTP10S5</b> | 21 | <b>ETTP10S11</b> | 3/4" | two pegs, top entry, high construction                    | <b>CAV 10 L21</b>  |
|  | <b>ETTP10S6</b> | 29 | <b>ETTP10S12</b> | 1"   | two pegs, top entry, high construction                    | <b>CAV 10 L29</b>  |
|  | <b>ECC10S4</b>  | 16 | <b>ECC10S10</b>  | 1/2" | single lever, top entry, cable coupler                    | <b>CHV 10 LG</b>   |
|  | <b>ECC10S5</b>  | 21 | <b>ECC10S11</b>  | 3/4" | single lever, top entry, cable coupler, high construction | <b>CAV 10 LG21</b> |
|  | <b>ECC10S6</b>  | 29 | <b>ECC10S12</b>  | 1"   | single lever, top entry, cable coupler, high construction | <b>CAV 10 LG29</b> |

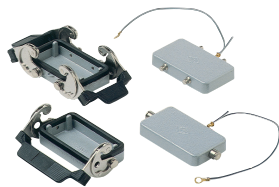
\* special order, consult factory for delivery



### Series E 10 poles + ⚡

| Pg | Part #          | Pg | NPT Part #       | NPT  | Hoods                                        | OEM Part #        |
|----|-----------------|----|------------------|------|----------------------------------------------|-------------------|
|    | <b>ESEL10D4</b> | 16 | <b>ESEL10D10</b> | 1/2" | double levers, side entry                    | <b>CHO 10 X</b>   |
|    | <b>ESTL10D5</b> | 21 | <b>ESTL10D11</b> | 3/4" | double levers, side entry, high construction | <b>CAO 10 X</b>   |
|    | <b>ESTL10D6</b> | 29 | <b>ESTL10D12</b> | 1"   | double levers, side entry, high construction | <b>CAO 10 X29</b> |
|    | <b>ETEL10D4</b> | 16 | <b>ETEL10D10</b> | 1/2" | double levers, top entry                     | <b>CHV 10 X</b>   |
|    | <b>ETTL10D5</b> | 21 | <b>ETTL10D11</b> | 3/4" | double levers, top entry, high construction  | <b>CAV 10 X</b>   |
|    | <b>ETTL10D6</b> | 29 | <b>ETTL10D12</b> | 1"   | double levers, top entry, high construction  | <b>CAV 10 X29</b> |

## Covers



### Series E 10 poles + ⚡

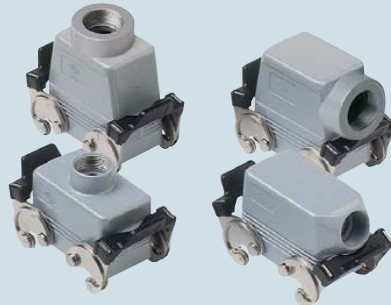
| Part #        | Covers                                      | OEM Part #       |
|---------------|---------------------------------------------|------------------|
| <b>EP10DL</b> | four pegs (for housings with double levers) | <b>CHC 10</b>    |
| <b>EP10SL</b> | two pegs (for housings with single lever)   | <b>CHC 10 L</b>  |
| <b>EL10DL</b> | double levers (for hoods with four pegs)    | <b>CHC 10 G</b>  |
| <b>EL10SL</b> | single lever (for hoods with two pegs)      | <b>CHC 10 LG</b> |

CH - CA and MH - MA enclosures

size "57.27" standard version



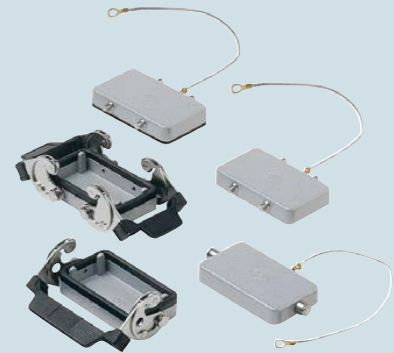
hoods with 2 levers



insert centre distance: 57 x 27 mm

The covers for C, G and LG versions cannot be used together with coding pins. If this application is required, please contact ILME SpA.

covers



| description                                                       | part No.          | entry Pg | part No.             | entry M | part No.         |
|-------------------------------------------------------------------|-------------------|----------|----------------------|---------|------------------|
| with levers, side entry <sup>1)</sup>                             | <b>CHO 10 X</b>   | 16       | <b>MHO 10 X20</b>    | 20      |                  |
| with levers, side entry <sup>1)</sup>                             |                   |          | <b>MHO 10 X25</b>    | 25      |                  |
| with levers, side entry, high construction <sup>1)</sup>          | <b>CAO 10 X</b>   | 21       | <b>MAO 10 X32</b>    | 32      |                  |
| with levers, side entry, high construction <sup>1)</sup>          | <b>CAO 10 X29</b> | 29       | <b>MAO 10 X40</b>    | 40      |                  |
| with levers, top entry <sup>1)</sup>                              | <b>CHV 10 X</b>   | 16       | <b>MHV 10 X20 **</b> | 20      |                  |
| with levers, top entry <sup>1)</sup>                              |                   |          | <b>MHV 10 X25</b>    | 25      |                  |
| with levers, top entry, high construction <sup>1)</sup>           | <b>CAV 10 X</b>   | 21       | <b>MAV 10 X32</b>    | 32      |                  |
| with levers, top entry, high construction <sup>1)</sup>           | <b>CAV 10 X29</b> | 29       | <b>MAV 10 X40</b>    | 40      |                  |
| with 4 pegs (for housings with 2 levers and gasket)               |                   |          |                      |         | <b>CHC 10</b>    |
| with 4 pegs and gasket (for housings with 2 levers) <sup>2)</sup> |                   |          |                      |         | <b>CHC 10 C</b>  |
| with 2 pegs (for housings with 1 lever and gasket)                |                   |          |                      |         | <b>CHC 10 L</b>  |
| with 2 levers (for hoods with 4 pegs)                             |                   |          |                      |         | <b>CHC 10 G</b>  |
| with 1 lever (for hoods with 2 pegs)                              |                   |          |                      |         | <b>CHC 10 LG</b> |

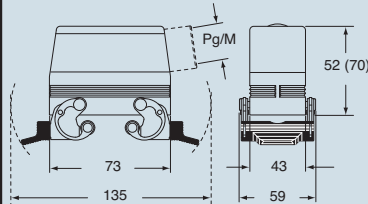
<sup>1)</sup> May be combined with housings:  
 - CHI/CHP/CAP 10 CS/CP/C  
 - MHP/MAP 10 CS/CP

<sup>2)</sup> May be combined with hoods:  
 - CHO/CAO 10 X and CHV/CAV 10 X  
 - MHO/MAO 10 X and MHV/MAV 10 X

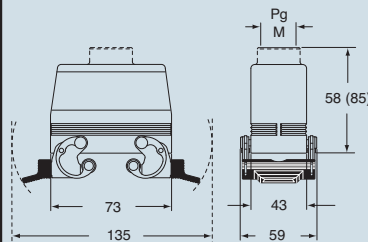
\*\* can only be used with a complete cable clamp (to be purchased separately)

dimensions in mm

CHO X (CAO X) and MHO X (MAO X)

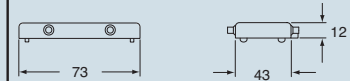


CHV X (CAV X) and MHV X (MAV X)



dimensions in mm

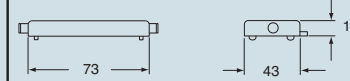
CHC



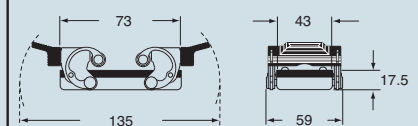
CHC C



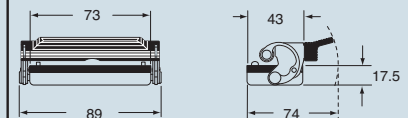
CHC L



CHC G



CHC LG

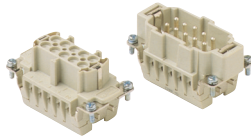


dimensions shown are not binding and may be changed without notice



# HEAVY DUTY MULTIPOLE CONNECTORS

## Inserts

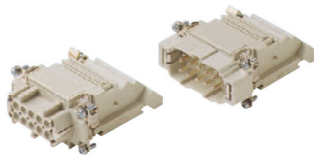


### Series E 10 poles + $\frac{1}{2}$ 16A max - 600V

| Part # | Screw Terminal with wire protection | OEM Part # |
|--------|-------------------------------------|------------|
| E10RS  | female inserts                      | CNEF 10 T  |
| E10PS  | male inserts                        | CNEM 10 T  |

| Part # | Cage Clamp     | OEM Part # |
|--------|----------------|------------|
| E10RG  | female inserts | CSEF 10    |
| E10PG  | male inserts   | CSEM 10    |

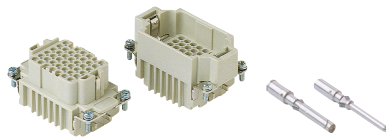
Wire conductor range: 20 ÷ 12 AWG



### Series E-TB 10 poles + $\frac{1}{2}$ 16A max - 600V

| Part #    | Terminal Block Inserts Screw Terminal Connection     |
|-----------|------------------------------------------------------|
| E10RS-TBL | female inserts with female contacts (left mounting)  |
| E10RS-TBR | female inserts with female contacts (right mounting) |
| E10PS-TBL | male inserts with male contacts (left mounting)      |
| E10PS-TBR | male inserts with male contacts (right mounting)     |

Wire conductor range: 18 ÷ 14 AWG

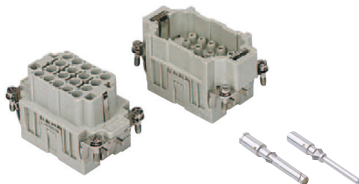


### Series DD 42 poles + $\frac{1}{2}$ 10A max - 600V

| Part # | Crimp Terminal | OEM Part # |
|--------|----------------|------------|
| DD42RC | female inserts | CDDF 42    |
| DD42PC | male inserts   | CDDM 42    |

Wire conductor range: 22 ÷ 14 AWG

10A Crimp Contacts must be ordered separately

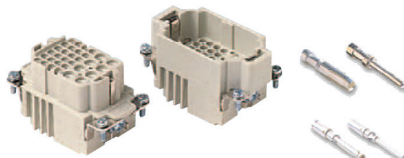


### Series EQ 18 poles + $\frac{1}{2}$ 16A max - 600V

| Part # | Inserts, Crimp Connections         |
|--------|------------------------------------|
| EQ18RC | female inserts for female contacts |
| EQ18PC | male inserts for male contacts     |

Wire conductor range: 20 ÷ 12 AWG

16A Crimp Contacts must be ordered separately, see page B-28



### Series EA 8 poles (16A max-400V) + 24 poles (10A max-250V) + $\frac{1}{2}$

| Part #   | Inserts, Crimp Connections         |
|----------|------------------------------------|
| EA8/24RC | female inserts for female contacts |
| EA8/24PC | male inserts for male contacts     |

Wire conductor range: 10A/22 ÷ 14 AWG, 16A/20 ÷ 12 AWG

16A and 10A Crimp Contacts must be ordered separately

# HEAVY DUTY MULTIPOLE CONNECTORS



## Bases



### Series E 10 poles + $\frac{1}{2}$

| Part #   | Terminal Block Inserts | Screw Terminal Connection | OEM Part # |
|----------|------------------------|---------------------------|------------|
| EPML10D  | double levers          |                           | CHI 10     |
| EPMP10DC | four pegs and cover    |                           | CHI 10 CS  |
| EPML10S  | single lever           |                           | CHI 10 L   |
| EPML10SC | single lever and cover |                           | CHI 10 LS  |

| Pg Part # | Pg     | NPT Part # | NPT      | Surface Mounting Housings                           | OEM Part #   |
|-----------|--------|------------|----------|-----------------------------------------------------|--------------|
| ES1L10D4  | 16     | ES1L10D10  | 1/2"     | double levers, single port                          | CHP 10       |
| ES2L10D4  | 16 x 2 | ES2L10D10  | 1/2" x 2 | double levers, double port                          | CHP 10.2     |
| ES1L10D5  | 21     | ES1L10D11  | 3/4"     | double levers, single port, high construction       | CAP 10.21    |
| ES2L10D5  | 21 x 2 | ES2L10D11  | 3/4" x 2 | double levers, double port, high construction       | CAP 10.221   |
| ES1L10D6  | 29     | ES1L10D12  | 1"       | double levers, single port, high construction       | CAP 10.29    |
| ES2L10D6  | 29 x 2 | ES2L10D12  | 1" x 2   | double levers, double port, high construction       | CAP 10.229   |
| ES1P10DC4 | 16     | ES1P10DC10 | 1/2"     | four pegs and cover, single port                    | CHP 10 CS    |
| ES2P10DC4 | 16 x 2 | ES2P10DC10 | 1/2" x 2 | four pegs and cover, double port                    | CHP 10 CS2   |
| ES1P10DC5 | 21     | ES1P10DC11 | 3/4"     | four pegs and cover, single port, high construction | CAP 10 CS    |
| ES2P10DC5 | 21 x 2 | ES2P10DC11 | 3/4" x 2 | four pegs and cover, double port, high construction | CAP 10 CS2   |
| ES1P10DC6 | 29     | ES1P10DC12 | 1"       | four pegs and cover, single port, high construction | CAP 10 CS29  |
| ES2P10DC6 | 29 x 2 | ES2P10DC12 | 1" x 2   | four pegs and cover, double port, high construction | CAP 10 CS229 |



### Series E 10 poles + $\frac{1}{2}$

| Pg Part # | Pg     | NPT Part # | NPT      | Surface Mounting Housings                              | OEM Part #   |
|-----------|--------|------------|----------|--------------------------------------------------------|--------------|
| ES1L10S4  | 16     | ES1L10S10  | 1/2"     | single lever, single port                              | CHP 10 L     |
| ES2L10S4  | 16 x 2 | ES2L10S10  | 1/2" x 2 | single lever, double port                              | CHP 10 L2    |
| ES1L10S5  | 21     | ES1L10S11  | 3/4"     | single lever, single port, high construction           | CAP 10 L     |
| ES2L10S5  | 21 x 2 | ES2L10S11  | 3/4" x 2 | single lever, double port, high construction           | CAP 10 L2    |
| ES1L10S6  | 29     | ES1L10S12  | 1"       | single lever, single port, high construction           | CAP 10 L29   |
| ES2L10S6  | 29 x 2 | ES2L10S12  | 1" x 2   | single lever, double port, high construction           | CAP 10 L229  |
| ES1L10SC4 | 16     | ES1L10SC10 | 1/2"     | single lever and cover, single port                    | CHP 10 LS    |
| ES2L10SC4 | 16 x 2 | ES2L10SC10 | 1/2" x 2 | single lever and cover, double port                    | CHP 10 LS2   |
| ES1L10SC5 | 21     | ES1P10SC11 | 3/4"     | single lever and cover, single port, high construction | CAP 10 LS    |
| ES2L10SC5 | 21 x 2 | ES2P10SC11 | 3/4" x 2 | single lever and cover, double port, high construction | CAP 10 LS2   |
| ES1L10SC6 | 29     | ES1P10SC12 | 1"       | single lever and cover, single port, high construction | CAP 10 LS29  |
| ES2L10SC6 | 29 x 2 | ES2P10SC12 | 1" x 2   | single lever and cover, double port, high construction | CAP 10 LS229 |

# GENERAL FEATURES OF MULTIPOLE CONNECTORS FOR INDUSTRIAL PURPOSES

- 1 Threaded cable passage in various Pg diameters, metric diameters in accordance with EN 60423 and "NPT" diameters, for cable entry devices in accordance with EN 50262, may be located vertically, horizontally or frontally.
- 2 Heavy duty enclosures in die-cast aluminium alloy or self-extinguishing thermoplastic (A-03 series).  
Wall mounting or bulkhead housings and hoods are available, with or without fixed covers or with mobile protection covers.
- 3 Metallic enclosures with a coated finish of epoxy-polyester with high resistance to mechanical stress and external agents. Enclosures used with temperatures of up to 180°C and in aggressive environments

are treated with special coatings. Where electromagnetic compatibility is necessary: EMC enclosures with high conductivity and high corrosion resistance surface treatment.

- 4 Inserts in self-extinguishing thermoplastic material reinforced with glass fibres, UL approved, with a limit working temperature from -40°C to +125°C. For some series, inserts in PPS (polyphenylene sulphide) may be requested for special uses with temperatures of up to 180°C.
- 5 Polarized inserts with asymmetric guide rails for preventing incorrect coupling. The inserts have a mechanical duration equal to or over 500 coupling cycles.

- 6 Inserts manufactured in conformity with the DIN VDE 0627 standard and are certified and identified with the UL and CSA marks.
- 7 Special seal gaskets in vinyl nitrile elastomer or fluoro elastomer (on enclosures for use with maximum temperatures of 180°C and for aggressive environments), in antiaging, oil-resistant, fuel-resistant, together with the cable entry devices (not supplied) provide an IP66 degree of protection for coupled connectors.  
Special conductive seals for EMC enclosures.
- 8 Stainless steel closure levers and springs guarantee a perfect closure and sealing.
- 9 Locking device available in two versions, simple (with one lever), or double (with two levers).

- 10 Various types of handles are available: in self-extinguishing, thermoplastic material reinforced with glass fibres; in die-cast aluminium (for special use with temperatures of up to 180°C); monoblock stainless steel handles (A-03 enclosures and for special uses with temperatures of up to 180°C).
- 11 Unlosable insert fastening screws, with antiloosening flexible washer.
- 12 Contacts position identified with numbers or codes on both sides of each insert and laser printed or moulded.
- 13 Contacts in silver or gold-plated brass (special order) with connections to the conductors made via unlosable unloosened screws, spring terminal, crimping or incorporated 45° terminal block connectors (with screw or spring terminal).
- 14 Earth terminal protection with wide contact surface.
- 15 Pegs and levers supplied with anti-friction rings that facilitate closure and limit wear and tear.
- 16 CE marking attesting conformity to the requirements of the Low Voltage directive 73/23/EEC and its modification 93/68/EEC.

