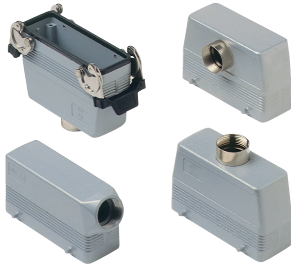


HEAVY DUTY MULTIPOLE CONNECTORS



Hoods

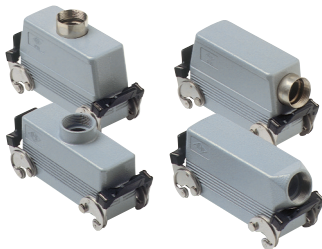
Series E 24 poles + ⚡



Pg Part #	Pg	NPT Part #	NPT	Hoods	OEM Part #
ESEP24D5	21	ESEP24D11	3/4"	four pegs, side entry	CHO 24
ESTP24D5	21	ESTP24D11	3/4"	four pegs, side entry, high construction	CAO 24.21
ESTP24D6	29	ESTP24D12	1"	four pegs, side entry, high construction	CAO 24.29
ETEP24D5	21	ETEP24D11	3/4"	four pegs, top entry	CHV 24
ETEP24D6	29	ETEP24D12	1"	four pegs, top entry	CHV 24.29
ETTP24D5	21	ETTP24D11	3/4"	four pegs, top entry, high construction	CAV 24.21
ETTP24D6	29	ETTP24D12	1"	four pegs, top entry, high construction	CAV 24.29
EFEP24D5*	21	EFEP24D11*	3/4"	four pegs, front entry, high construction	CAF 24.21
EFEP24D6*	29	EFEP24D12*	1"	four pegs, front entry, high construction	CAF 24.29
ECC24D5	21	ECC24D11	3/4"	double levers, top entry, cable coupler, high construction	CHV 24 G
ECC24D6	29	ECC24D12	1"	double levers, top entry, cable coupler, high construction	CAV 24 G29

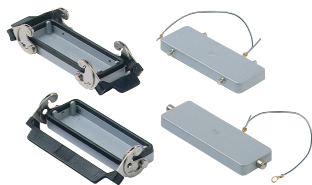


ESEP24S5	21	ESEP24S11	3/4"	two pegs, side entry	CHO 24 L
ESTP24S5	21	ESTP24S11	3/4"	two pegs, side entry, high construction	CAO 24 L21
ESTP24S6	29	ESTP24S12	1"	two pegs, side entry, high construction	CAO 24 L29
ETEP24S5	21	ETEP24S11	3/4"	two pegs, top entry	CHV 24 L
ETEP24S6	29	ETEP24S12	1"	two pegs, top entry	CHV 24 L29
ETTP24S5	21	ETTP24S11	3/4"	two pegs, top entry, high construction	CAV 24 L21
ETTP24S6	29	ETTP24S12	1"	two pegs, top entry, high construction	CAV 24 L29
ECC24S5	21	ECC24S11	3/4"	single lever, top entry, cable coupler	CHV 24 LG
ECC24S6	29	ECC24S12	1"	single lever, top entry, cable coupler, high construction	CAV 24 LG29



ESEL24D5	21	ESEL24D11	3/4"	double levers, side entry	CHO 24 X
ESTL24D5	21	ESTL24D11	3/4"	double levers, side entry, high construction	CAO 24 X
ESTL24D6	29	ESTL24D12	1"	double levers, side entry, high construction	CAO 24 X29
ETEL24D5	21	ETEL24D11	3/4"	double levers, top entry	CHV 24 X
ETTL24D5	21	ETTL24D11	3/4"	double levers, top entry, high construction	CAV 24 X
ETTL24D6	29	ETTL24D12	1"	double levers, top entry, high construction	CAV 24 X29

Covers



Series E 24 poles + ⚡

Part #	Covers	OEM Part #
EP24DL	four pegs (for housings with double levers)	CHC 24
EP24SL	two pegs (for housings with single lever)	CHC 24 L
EL24DL	double levers (for hoods with four pegs)	CHC 24 G
EL24SL	single lever (for hoods with two pegs)	CHC 24 LG

* special order, consult factory for delivery

CH - CA and MH - MA enclosures

size "104.27" standard version



insert centre distance:
104 x 27 mm

hoods
with 4 pegs



hoods
with 2 pegs



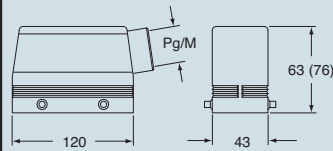
description	part No.	entry Pg	part No.	entry M	part No.	entry Pg	part No.	entry M
with pegs, side entry	CHO 24	21	MHO 24.25	25	CHO 24 L	21	MHO 24 L25	25
with pegs, side entry			MHO 24.32	32			MHO 24 L32	32
with pegs, side entry, high construction	CAO 24.21	21	MAO 24.32	32	CAO 24 L21	21	MAO 24 L32	32
with pegs, side entry, high construction	CAO 24.29	29	MAO 24.40	40	CAO 24 L29	29	MAO 24 L40	40
with pegs, top entry	CHV 24	21	MHV 24.25 **	25	CHV 24 L	21	MHV 24 L25	25
with pegs, top entry			MHV 24.32	32			MHV 24 L32	32
with pegs, top entry	CHV 24.29	29	MHV 24.40	40	CHV 24 L29	29	MHV 24 L40	40
with pegs, top entry, high construction	CAV 24.21	21	MAV 24.32	32	CAV 24 L21	21	MAV 24 L32	32
with pegs, top entry, high construction	CAV 24.29	29	MAV 24.40	40	CAV 24 L29	29	MAV 24 L40	40
with pegs, frontal entry, high construction	CAF 24.21	21	MAF 24.25	25				
with pegs, frontal entry, high construction	CAF 24.29	29	MAF 24.32	32				
with pegs, frontal entry, high construction, without adaptor *	CFF 24.21	21	MFF 24.25	25				
with pegs, frontal entry, high construction, without adaptor *	CFF 24.29	29	MFF 24.32	32				

* enclosure without adaptor, threaded on the body, to be used only with a complete cable clamp.

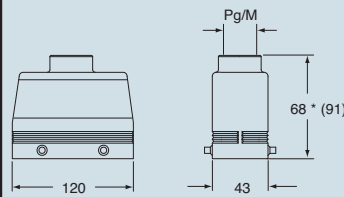
** can only be used with a complete cable clamp (to be purchased separately)

dimensions in mm

CHO (CAO) and MHO (MAO)

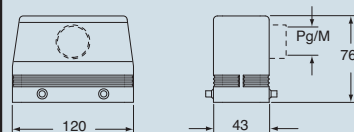


CHV (CAV) and MHV (MAV)



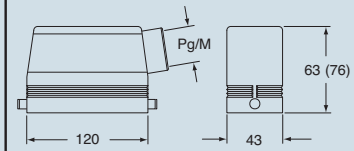
* 69.5 for Pg 29 - M 40 versions

CAF/CFF and MAF/MFF

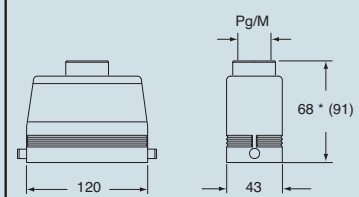


dimensions in mm

CHO L (CAO L) and MHO L (MAO L)



CHV L (CAV L) and MHV L (MAV L)



* 69.5 for Pg 29 - M 40 versions

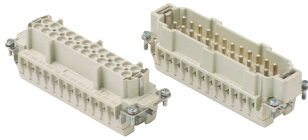
CALUS® Type 4/4X/12

dimensions shown are not binding and may be changed without notice

HEAVY DUTY MULTIPOLE CONNECTORS



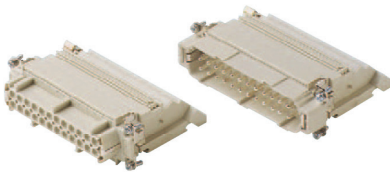
Inserts



Series E **24 poles + 1/2 16A max - 600V**

Part #	Screw Terminal with wire protection	OEM Part #
E24RS	female inserts	CNEF 24 T
E24PS	male inserts	CNEM 24 T
Part #	Cage Clamp	OEM Part #
E24RG	female inserts	CSEF 24
E24PG	male inserts	CSEM 24

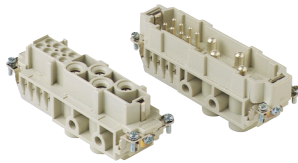
Wire conductor range: 20 ÷ 12 AWG



Series E-TB **24 poles + 1/2 16A max - 600V**

Part #	Terminal Block Inserts Screw Terminal Connection	OEM Part #
E24RS-TBL	female inserts with female contacts (left mounting)	CTF 24 L
E24RS-TBR	female inserts with female contacts (right mounting)	
E24PS-TBL	male inserts with male contacts (left mounting)	
E24PS-TBR	male inserts with male contacts (right mounting)	

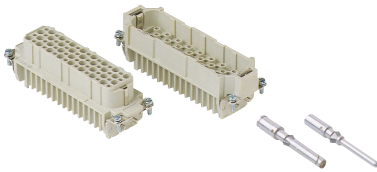
Wire conductor range: 18 ÷ 14 AWG



Series MP **4 poles + 8 poles + 1/2 80A max - 600V + 16A max - 600V**

Part #	Screw Terminal	OEM Part #
MP4/8RS	female inserts	CXF 4/8
MP4/8PS	male inserts	CXM 4/8

Wire conductor range: 80A/12 ÷ 6 AWG / 16A/18 ÷ 14 AWG

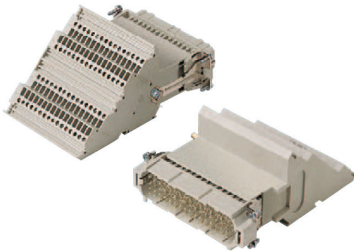


Series D **64 poles + 1/2 10A max - 600V**

Part #	Crimp Terminal	OEM Part #
D64RC	female inserts	CDF 64
D64PC	male inserts	CDM 64

Wire conductor range: 22 ÷ 14 AWG

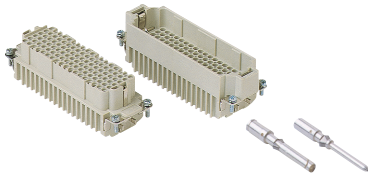
10A Crimp Contacts must be ordered separately, see page B-28



Series D-TB **64 poles + 1/2 10A max - 600V**

Part #	Terminal Block Inserts Screw Terminal Connection
D64RS-TBL	female inserts with female contacts (left mounting)
D64RS-TBR	female inserts with female contacts (right mounting)
D64PS-TBL	male inserts with male contacts (left mounting)
D64PS-TBR	male inserts with male contacts (right mounting)

Wire conductor range: 18 ÷ 14 AWG

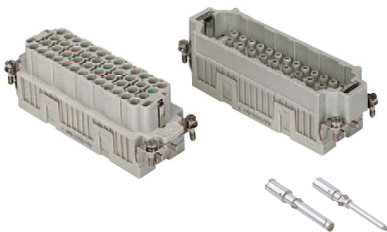


Series DD **108 poles + 1/2 10A max - 600V**

Part #	Crimp Terminal	OEM Part #
DD108RC	female inserts	CDDF 108
DD108PC	male inserts	CDDM 108

Wire conductor range: 22 ÷ 14 AWG

10A Crimp Contacts must be ordered separately, see page B-28



Series EQ **46 poles + 1/2 16A max - 600V**

Part #	Inserts, Crimp Connections
EQ46RC	female inserts for female contacts
EQ46PC	male inserts for male contacts

Wire conductor range: 20 ÷ 12 AWG

16A Crimp Contacts must be ordered separately



HEAVY DUTY MULTIPOLE CONNECTORS

Bases



Series E 24 poles + \pm

Part #	Panel Mounting Housings	OEM Part #
EPML24D	double levers	CHI 24
EPMP24DC	four pegs and cover	CHI 24 CS
EPML24S	single lever	CHI 24 L
EPML24SC	single lever and cover	CHI 24 LS

Pg Part #	Pg	NPT Part #	NPT	Surface Mounting Housings	OEM Part #
ES1L24D5	21	ES1L24D11	3/4"	double levers, single port	CHP 24
ES2L24D5	21 x 2	ES2L24D11	3/4" x 2	double levers, double port	CHP 24.2
ES1L24D6	29	ES1L24D12	1"	double levers, single port, high construction	CAP 24.29
ES2L24D6	29 x 2	ES2L24D12	1" x 2	double levers, double port, high construction	CAP 24.229
ES1P24DC5	21	ES1P24DC11	3/4"	four pegs and cover, single port	CHP 24 CS
ES2P24DC5	21 x 2	ES2P24DC11	3/4" x 2	four pegs and cover, double port	CHP 24 CS2
ES1P24DC6	29	ES1P24DC12	1"	four pegs and cover, single port, high construction	CAP 24 CS29
ES2P24DC6	29 x 2	ES2P24DC12	1" x 2	four pegs and cover, double port, high construction	CAP 24 CS229

ES1L24S5	21	ES1L24S11	3/4"	single lever, single port	CHP 24 L
ES2L24S5	21 x 2	ES2L24S11	3/4" x 2	single lever, double port	CHP 24 L2
ES1L24S6	29	ES1L24S12	1"	single lever, single port, high construction	CAP 24 L29
ES2L24S6	29 x 2	ES2L24S12	1" x 2	single lever, double port, high construction	CAP 24 L229
ES1L24SC5	21	ES1L24SC11	3/4"	single lever and cover, single port	CHP 24 LS
ES2L24SC5	21 x 2	ES2L24SC11	3/4" x 2	single lever and cover, double port	CHP 24 LS2
ES1L24SC6	29	ES1L24SC12	1"	single lever and cover, single port, high construction	CAP 24 LS29
ES2L24SC6	29 x 2	ES2L24SC12	1" x 2	single lever and cover, double port, high construction	CAP 24 LS229

USE RDC OR BRC CONNECTORS



GENERAL FEATURES OF MULTIPOLE CONNECTORS FOR INDUSTRIAL PURPOSES

- 1 Threaded cable passage in various Pg diameters, metric diameters in accordance with EN 60423 and "NPT" diameters, for cable entry devices in accordance with EN 50262, may be located vertically, horizontally or frontally.
- 2 Heavy duty enclosures in die-cast aluminium alloy or self-extinguishing thermoplastic (A-03 series).
Wall mounting or bulkhead housings and hoods are available, with or without fixed covers or with mobile protection covers.
- 3 Metallic enclosures with a coated finish of epoxy-polyester with high resistance to mechanical stress and external agents. Enclosures used with temperatures of up to 180°C and in aggressive environments

are treated with special coatings. Where electromagnetic compatibility is necessary: EMC enclosures with high conductivity and high corrosion resistance surface treatment.

- 4 Inserts in self-extinguishing thermoplastic material reinforced with glass fibres, UL approved, with a limit working temperature from -40°C to +125°C. For some series, inserts in PPS (polyphenylene sulphide) may be requested for special uses with temperatures of up to 180°C.
- 5 Polarized inserts with asymmetric guide rails for preventing incorrect coupling. The inserts have a mechanical duration equal to or over 500 coupling cycles.

- 6 Inserts manufactured in conformity with the DIN VDE 0627 standard and are certified and identified with the UL and CSA marks.
- 7 Special seal gaskets in vinyl nitrile elastomer or fluoro elastomer (on enclosures for use with maximum temperatures of 180°C and for aggressive environments), in antiaging, oil-resistant, fuel-resistant, together with the cable entry devices (not supplied) provide an IP66 degree of protection for coupled connectors.
Special conductive seals for EMC enclosures.
- 8 Stainless steel closure levers and springs guarantee a perfect closure and sealing.
- 9 Locking device available in two versions, simple (with one lever), or double (with two levers).

- 10 Various types of handles are available: in self-extinguishing, thermoplastic material reinforced with glass fibres; in die-cast aluminium (for special use with temperatures of up to 180°C); monoblock stainless steel handles (A-03 enclosures and for special uses with temperatures of up to 180°C).
- 11 Unlosable insert fastening screws, with antiloosening flexible washer.
- 12 Contacts position identified with numbers or codes on both sides of each insert and laser printed or moulded.
- 13 Contacts in silver or gold-plated brass (special order) with connections to the conductors made via unlosable unloosened screws, spring terminal, crimping or incorporated 45° terminal block connectors (with screw or spring terminal).
- 14 Earth terminal protection with wide contact surface.
- 15 Pegs and levers supplied with anti-friction rings that facilitate closure and limit wear and tear.
- 16 CE marking attesting conformity to the requirements of the Low Voltage directive 73/23/EEC and its modification 93/68/EEC.

