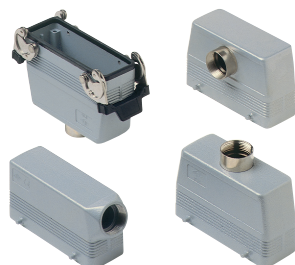


## HEAVY DUTY MULTIPOLE CONNECTORS



### Hoods

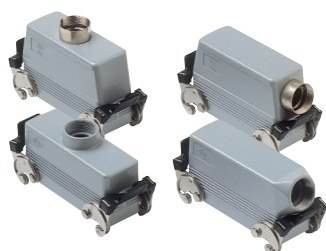
#### Series E 24 poles ±



| Pg Part #       | Pg        | NPT Part #       | NPT       | Hoods  | OEM Part #       |
|-----------------|-----------|------------------|-----------|--|------------------|
| ESEP24D5        | 21        | ESEP24D11        | 3/4"      | four pegs, side entry                                      | CHO 24           |
| ESTP24D5        | 21        | ESTP24D11        | 3/4"      | four pegs, side entry, high construction                   | CAO 24.21        |
| <b>ESTP24D6</b> | <b>29</b> | <b>ESTP24D12</b> | <b>1"</b> | <b>four pegs, side entry, high construction</b>            | <b>CAO 24.29</b> |
| ETEP24D5        | 21        | ETEP24D11        | 3/4"      | four pegs, top entry                                       | CHV 24           |
| ETEP24D6        | 29        | ETEP24D12        | 1"        | four pegs, top entry                                       | CHV 24.29        |
| ETTP24D5        | 21        | ETTP24D11        | 3/4"      | four pegs, top entry, high construction                    | CAV 24.21        |
| ETTP24D6        | 29        | ETTP24D12        | 1"        | four pegs, top entry, high construction                    | CAV 24.29        |
| EFEP24D5*       | 21        | EFEP24D11*       | 3/4"      | four pegs, front entry, high construction                  | CAF 24.21        |
| EFEP24D6*       | 29        | EFEP24D12*       | 1"        | four pegs, front entry, high construction                  | CAF 24.29        |
| ECC24D5         | 21        | ECC24D11         | 3/4"      | double levers, top entry, cable coupler, high construction | CHV 24 G         |
| ECC24D6         | 29        | ECC24D12         | 1"        | double levers, top entry, cable coupler, high construction | CAV 24 G29       |

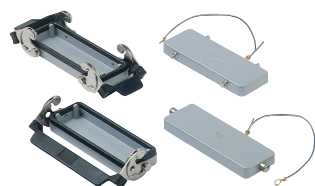


|          |    |           |      |   |             |
|----------|----|-----------|------|---|-------------|
| ESEP24S5 | 21 | ESEP24S11 | 3/4" | two pegs, side entry                                      | CHO 24 L    |
| ESTP24S5 | 21 | ESTP24S11 | 3/4" | two pegs, side entry, high construction                   | CAO 24 L21  |
| ESTP24S6 | 29 | ESTP24S12 | 1"   | two pegs, side entry, high construction                   | CAO 24 L29  |
| ETEP24S5 | 21 | ETEP24S11 | 3/4" | two pegs, top entry                                       | CHV 24 L    |
| ETEP24S6 | 29 | ETEP24S12 | 1"   | two pegs, top entry                                       | CHV 24 L29  |
| ETTP24S5 | 21 | ETTP24S11 | 3/4" | two pegs, top entry, high construction                    | CAV 24 L21  |
| ETTP24S6 | 29 | ETTP24S12 | 1"   | two pegs, top entry, high construction                    | CAV 24 L29  |
| ECC24S5  | 21 | ECC24S11  | 3/4" | single lever, top entry, cable coupler                    | CHV 24 LG   |
| ECC24S6  | 29 | ECC24S12  | 1"   | single lever, top entry, cable coupler, high construction | CAV 24 LG29 |



|          |    |           |      |  |            |
|----------|----|-----------|------|--|------------|
| ESEL24D5 | 21 | ESEL24D11 | 3/4" | double levers, side entry                    | CHO 24 X   |
| ESTL24D5 | 21 | ESTL24D11 | 3/4" | double levers, side entry, high construction | CAO 24 X   |
| ESTL24D6 | 29 | ESTL24D12 | 1"   | double levers, side entry, high construction | CAO 24 X29 |
| ETEL24D5 | 21 | ETEL24D11 | 3/4" | double levers, top entry                     | CHV 24 X   |
| ETTL24D5 | 21 | ETTL24D11 | 3/4" | double levers, top entry, high construction  | CAV 24 X   |
| ETTL24D6 | 29 | ETTL24D12 | 1"   | double levers, top entry, high construction  | CAV 24 X29 |

### Covers



#### Series E 24 poles ±

| Part # | Covers                                      | OEM Part # |
|--------|---|------------|
| EP24DL | four pegs (for housings with double levers) | CHC 24     |
| EP24SL | two pegs (for housings with single lever)   | CHC 24 L   |
| EL24DL | double levers (for hoods with four pegs)    | CHC 24 G   |
| EL24SL | single lever (for hoods with two pegs)      | CHC 24 LG  |

\* special order, consult factory for delivery

CH - CA and MH - MA enclosures

size "104.27" standard version



insert centre distance:  
104 x 27 mm

hoods  
with 4 pegs



hoods  
with 2 pegs



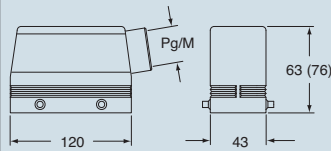
| description  | hoods with 4 pegs |          | hoods with 2 pegs   |         |
|--|-------------------|----------|---------------------|---------|
|  | part No.          | entry Pg | part No.            | entry M |
| with pegs, side entry  | <b>CHO 24</b>     | 21       | <b>MHO 24.25</b>    | 25      |
| with pegs, side entry  |                   |          | <b>MHO 24.32</b>    | 32      |
| with pegs, side entry, high construction                       | <b>CAO 24.21</b>  | 21       | <b>MAO 24.32</b>    | 32      |
| with pegs, side entry, high construction                       | <b>CAO 24.29</b>  | 29       | <b>MAO 24.40</b>    | 40      |
| with pegs, top entry   | <b>CHV 24</b>     | 21       | <b>MHV 24.25 **</b> | 25      |
| with pegs, top entry   |                   |          | <b>MHV 24.32</b>    | 32      |
| with pegs, top entry   | <b>CHV 24.29</b>  | 29       | <b>MHV 24.40</b>    | 40      |
| with pegs, top entry, high construction                        | <b>CAV 24.21</b>  | 21       | <b>MAV 24.32</b>    | 32      |
| with pegs, top entry, high construction                        | <b>CAV 24.29</b>  | 29       | <b>MAV 24.40</b>    | 40      |
| with pegs, frontal entry, high construction                    | <b>CAF 24.21</b>  | 21       | <b>MAF 24.25</b>    | 25      |
| with pegs, frontal entry, high construction                    | <b>CAF 24.29</b>  | 29       | <b>MAF 24.32</b>    | 32      |
| with pegs, frontal entry, high construction, without adaptor * | <b>CFF 24.21</b>  | 21       | <b>MFF 24.25</b>    | 25      |
| with pegs, frontal entry, high construction, without adaptor * | <b>CFF 24.29</b>  | 29       | <b>MFF 24.32</b>    | 32      |

\* enclosure without adaptor, threaded on the body, to be used only with a complete cable clamp.

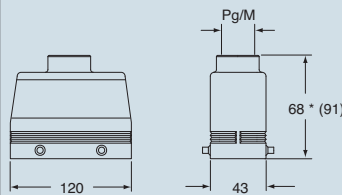
\*\* can only be used with a complete cable clamp (to be purchased separately)

dimensions in mm

**CHO (CAO) and MHO (MAO)**

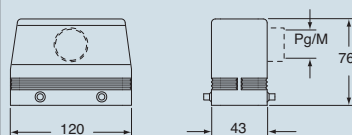


**CHV (CAV) and MHV (MAV)**



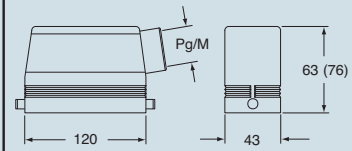
\* 69.5 for Pg 29 - M 40 versions

**CAF/CFF and MAF/MFF**

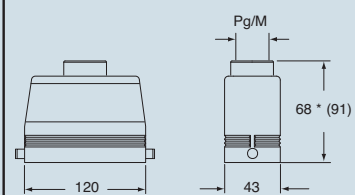


dimensions in mm

**CHO L (CAO L) and MHO L (MAO L)**



**CHV L (CAV L) and MHV L (MAV L)**



\* 69.5 for Pg 29 - M 40 versions

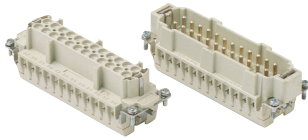


dimensions shown are not binding  
and may be changed without notice



# HEAVY DUTY MULTIPOLE CONNECTORS

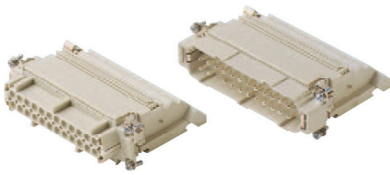
## Inserts



### Series E **24 poles + $\frac{1}{2}$ 16A max - 600V**

| Part # | Screw Terminal with wire protection | OEM Part # |
|--------|-------------------------------------|------------|
| E24RS  | female inserts                      | CNEF 24 T  |
| E24PS  | male inserts                        | CNEM 24 T  |
| Part # | Cage Clamp                          | OEM Part # |
| E24RG  | female inserts                      | CSEF 24    |
| E24PG  | male inserts                        | CSEM 24    |

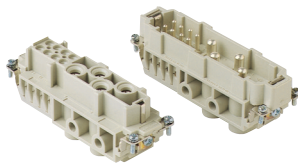
Wire conductor range: 20 ÷ 12 AWG



### Series E-TB **24 poles + $\frac{1}{2}$ 16A max - 600V**

| Part #    | Terminal Block Inserts Screw Terminal Connection     | OEM Part # |
|-----------|--|------------|
| E24RS-TBL | female inserts with female contacts (left mounting)  | CTF 24 L   |
| E24RS-TBR | female inserts with female contacts (right mounting) |            |
| E24PS-TBL | male inserts with male contacts (left mounting)      |            |
| E24PS-TBR | male inserts with male contacts (right mounting)     |            |

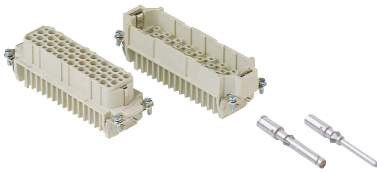
Wire conductor range: 18 ÷ 14 AWG



### Series MP **4 poles + 8 poles + $\frac{1}{2}$ 80A max - 600V + 16A max - 600V**

| Part #  | Screw Terminal | OEM Part # |
|---------|----------------|------------|
| MP4/8RS | female inserts | CXF 4/8    |
| MP4/8PS | male inserts   | CXM 4/8    |

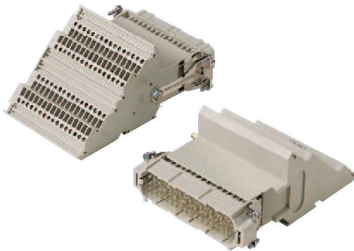
Wire conductor range: 80A/12 ÷ 6 AWG / 16A/18 ÷ 14 AWG



### Series D **64 poles + $\frac{1}{2}$ 10A max - 600V**

| Part # | Crimp Terminal | OEM Part # |
|--------|----------------|------------|
| D64RC  | female inserts | CDF 64     |
| D64PC  | male inserts   | CDM 64     |

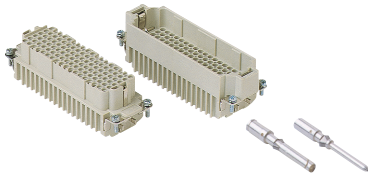
Wire conductor range: 22 ÷ 14 AWG  
10A Crimp Contacts must be ordered separately, see page B-28



### Series D-TB **64 poles + $\frac{1}{2}$ 10A max - 600V**

| Part #    | Terminal Block Inserts Screw Terminal Connection     |
|-----------|--|
| D64RS-TBL | female inserts with female contacts (left mounting)  |
| D64RS-TBR | female inserts with female contacts (right mounting) |
| D64PS-TBL | male inserts with male contacts (left mounting)      |
| D64PS-TBR | male inserts with male contacts (right mounting)     |

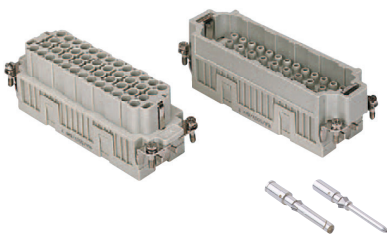
Wire conductor range: 18 ÷ 14 AWG



### Series DD **108 poles + $\frac{1}{2}$ 10A max - 600V**

| Part #  | Crimp Terminal | OEM Part # |
|---------|----------------|------------|
| DD108RC | female inserts | CDDF 108   |
| DD108PC | male inserts   | CDDM 108   |

Wire conductor range: 22 ÷ 14 AWG  
10A Crimp Contacts must be ordered separately, see page B-28



### Series EQ **46 poles + $\frac{1}{2}$ 16A max - 600V**

| Part # | Inserts, Crimp Connections         |
|--------|------------------------------------|
| EQ46RC | female inserts for female contacts |
| EQ46PC | male inserts for male contacts     |

Wire conductor range: 20 ÷ 12 AWG  
16A Crimp Contacts must be ordered separately



# HEAVY DUTY MULTIPOLE CONNECTORS

## Bases



### Series E 24 poles + $\frac{1}{2}$

| Part #   | Panel Mounting Housings | OEM Part # |
|----------|-------------------------|------------|
| EPML24D  | double levers           | CHI 24     |
| EPMP24DC | four pegs and cover     | CHI 24 CS  |
| EPML24S  | single lever            | CHI 24 L   |
| EPML24SC | single lever and cover  | CHI 24 LS  |

| Pg Part # | Pg     | NPT Part # | NPT      | Surface Mounting Housings                           | OEM Part #   |
|-----------|--------|------------|----------|---|--------------|
| ES1L24D5  | 21     | ES1L24D11  | 3/4"     | double levers, single port                          | CHP 24       |
| ES2L24D5  | 21 x 2 | ES2L24D11  | 3/4" x 2 | double levers, double port                          | CHP 24.2     |
| ES1L24D6  | 29     | ES1L24D12  | 1"       | double levers, single port, high construction       | CAP 24.29    |
| ES2L24D6  | 29 x 2 | ES2L24D12  | 1" x 2   | double levers, double port, high construction       | CAP 24.229   |
| ES1P24DC5 | 21     | ES1P24DC11 | 3/4"     | four pegs and cover, single port                    | CHP 24 CS    |
| ES2P24DC5 | 21 x 2 | ES2P24DC11 | 3/4" x 2 | four pegs and cover, double port                    | CHP 24 CS2   |
| ES1P24DC6 | 29     | ES1P24DC12 | 1"       | four pegs and cover, single port, high construction | CAP 24 CS29  |
| ES2P24DC6 | 29 x 2 | ES2P24DC12 | 1" x 2   | four pegs and cover, double port, high construction | CAP 24 CS229 |

|           |        |            |          |  |              |
|-----------|--------|------------|----------|--|--------------|
| ES1L24S5  | 21     | ES1L24S11  | 3/4"     | single lever, single port                              | CHP 24 L     |
| ES2L24S5  | 21 x 2 | ES2L24S11  | 3/4" x 2 | single lever, double port                              | CHP 24 L2    |
| ES1L24S6  | 29     | ES1L24S12  | 1"       | single lever, single port, high construction           | CAP 24 L29   |
| ES2L24S6  | 29 x 2 | ES2L24S12  | 1" x 2   | single lever, double port, high construction           | CAP 24 L229  |
| ES1L24SC5 | 21     | ES1L24SC11 | 3/4"     | single lever and cover, single port                    | CHP 24 LS    |
| ES2L24SC5 | 21 x 2 | ES2L24SC11 | 3/4" x 2 | single lever and cover, double port                    | CHP 24 LS2   |
| ES1L24SC6 | 29     | ES1L24SC12 | 1"       | single lever and cover, single port, high construction | CAP 24 LS29  |
| ES2L24SC6 | 29 x 2 | ES2L24SC12 | 1" x 2   | single lever and cover, double port, high construction | CAP 24 LS229 |

## USE RDC OR BRC CONNECTORS





# GENERAL FEATURES OF MULTIPOLE CONNECTORS FOR INDUSTRIAL PURPOSES

- 1 Threaded cable passage in various Pg diameters, metric diameters in accordance with EN 60423 and "NPT" diameters, for cable entry devices in accordance with EN 50262, may be located vertically, horizontally or frontally.
- 2 Heavy duty enclosures in die-cast aluminium alloy or self-extinguishing thermoplastic (A-03 series).  
Wall mounting or bulkhead housings and hoods are available, with or without fixed covers or with mobile protection covers.
- 3 Metallic enclosures with a coated finish of epoxy-polyester with high resistance to mechanical stress and external agents. Enclosures used with temperatures of up to 180°C and in aggressive environments

are treated with special coatings. Where electromagnetic compatibility is necessary: EMC enclosures with high conductivity and high corrosion resistance surface treatment.

- 4 Inserts in self-extinguishing thermoplastic material reinforced with glass fibres, UL approved, with a limit working temperature from -40°C to +125°C. For some series, inserts in PPS (polyphenylene sulphide) may be requested for special uses with temperatures of up to 180°C.
- 5 Polarized inserts with asymmetric guide rails for preventing incorrect coupling. The inserts have a mechanical duration equal to or over 500 coupling cycles.

- 6 Inserts manufactured in conformity with the DIN VDE 0627 standard and are certified and identified with the UL and CSA marks.
- 7 Special seal gaskets in vinyl nitrile elastomer or fluoro elastomer (on enclosures for use with maximum temperatures of 180°C and for aggressive environments), in antiaging, oil-resistant, fuel-resistant, together with the cable entry devices (not supplied) provide an IP66 degree of protection for coupled connectors.  
Special conductive seals for EMC enclosures.
- 8 Stainless steel closure levers and springs guarantee a perfect closure and sealing.
- 9 Locking device available in two versions, simple (with one lever), or double (with two levers).

- 10 Various types of handles are available: in self-extinguishing, thermoplastic material reinforced with glass fibres; in die-cast aluminium (for special use with temperatures of up to 180°C); monoblock stainless steel handles (A-03 enclosures and for special uses with temperatures of up to 180°C).
- 11 Unlosable insert fastening screws, with antiloosening flexible washer.
- 12 Contacts position identified with numbers or codes on both sides of each insert and laser printed or moulded.
- 13 Contacts in silver or gold-plated brass (special order) with connections to the conductors made via unlosable unloosened screws, spring terminal, crimping or incorporated 45° terminal block connectors (with screw or spring terminal).
- 14 Earth terminal protection with wide contact surface.
- 15 Pegs and levers supplied with anti-friction rings that facilitate closure and limit wear and tear.
- 16 CE marking attesting conformity to the requirements of the Low Voltage directive 73/23/EEC and its modification 93/68/EEC.

