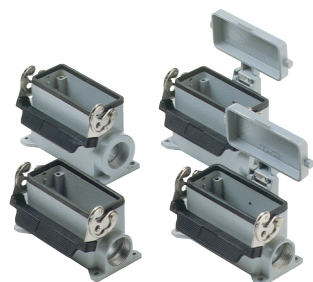
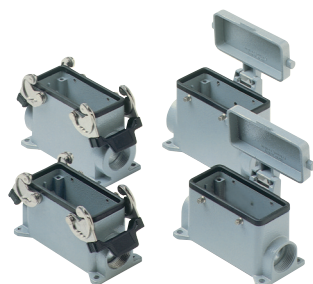


HEAVY DUTY MULTIPOLE CONNECTORS



Bases



Series E 16 poles + $\frac{1}{2}$

| Part # | Panel Mounting Housings | OEM Part # |
|----------|-------------------------|------------|
| EPML16D | double levers | CHI 16 |
| EPMP16DC | four pegs and cover | CHI 16 CS |
| EPML16S | single lever | CHI 16 L |
| EPML16SC | single lever and cover | CHI 16 LS |

| Pg Part # | Pg | NPT Part # | NPT | Hoods | OEM Part # |
|-----------|--------|------------|----------|---|--------------|
| ES1L16D5 | 21 | ES1L16D11 | 3/4" | double levers, single port | CHP 16 |
| ES2L16D5 | 21 x 2 | ES2L16D11 | 3/4" x 2 | double levers, double port | CHP 16.2 |
| ES1L16D6 | 29 | ES1L16D12 | 1" | double levers, single port, high construction | CAP 16.29 |
| ES2L16D6 | 29 x 2 | ES2L16D12 | 1" x 2 | double levers, double port, high construction | CAP 16.229 |
| ES1P16DC5 | 21 | ES1P16DC11 | 3/4" | four pegs and cover, single port | CHP 16 CS |
| ES2P16DC5 | 21 x 2 | ES2P16DC11 | 3/4" x 2 | four pegs and cover, double port | CHP 16 CS2 |
| ES1P16DC6 | 29 | ES1P16DC12 | 1" | four pegs and cover, single port, high construction | CAP 16 CS29 |
| ES2P16DC6 | 29 x 2 | ES2P16DC12 | 1" x 2 | four pegs and cover, double port, high construction | CAP 16 CS229 |

| | | | | | |
|-----------|--------|------------|----------|--|--------------|
| ES1L16S5 | 21 | ES1L16S11 | 3/4" | single lever, single port | CHP 16 L |
| ES2L16S5 | 21 x 2 | ES2L16S11 | 3/4" x 2 | single lever, double port | CAP 16 LS2 |
| ES1L16S6 | 29 | ES1L16S12 | 1" | single lever, single port, high construction | CAP 16 L29 |
| ES2L16S6 | 29 x 2 | ES2L16S12 | 1" x 2 | single lever, double port, high construction | CAP 16 L229 |
| ES1L16SC5 | 21 | ES1L16SC11 | 3/4" | single lever and cover, single port | CHP 16 LS |
| ES2L16SC5 | 21 x 2 | ES2L16SC11 | 3/4" x 2 | single lever and cover, double port | CHP 16 LS2 |
| ES1L16SC6 | 29 | ES1L16SC12 | 1" | single lever and cover, single port, high construction | CAP 16 LS29 |
| ES2L16SC6 | 29 x 2 | ES2L16SC12 | 1" x 2 | single lever and cover, double port, high construction | CAP 16 LS229 |

USE RDC OR BRC CONNECTORS



CH - CA and MH - MA enclosures

size "77.27" standard version



insert centre distance: 77.5 x 27 mm

surface mounting housings
with 2 levers or 4 pegs



surface mounting housings
with single lever

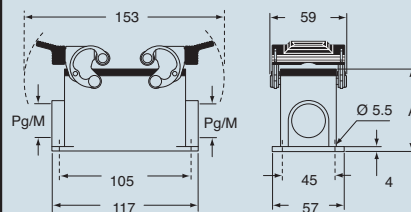


| description | part No. | entry Pg | part No. | entry M | part No. | entry Pg | part No. | entry M |
|--|--------------|----------|--------------|---------|--------------|----------|--------------|---------|
| with levers | CHP 16 | 21 | MHP 16.25 | 25 | CHP 16 L | 21 | MHP 16 L25 | 25 |
| with levers | CHP 16.2 | 21 x 2 | MHP 16.225 | 25 x 2 | CHP 16 L2 | 21 x 2 | MHP 16 L225 | 25 x 2 |
| with levers, high construction | CAP 16.21 | 21 | MAP 16.32 | 32 | CAP 16 L | 21 | MAP 16 L32 | 32 |
| with levers, high construction | CAP 16.221 | 21 x 2 | MAP 16.232 | 32 x 2 | CAP 16 L2 | 21 x 2 | MAP 16 L232 | 32 x 2 |
| with levers, high construction | CAP 16.29 | 29 | MAP 16.40 | 40 | CAP 16 L29 | 29 | MAP 16 L40 | 40 |
| with levers, high construction | CAP 16.229 | 29 x 2 | MAP 16.240 | 40 x 2 | CAP 16 L229 | 29 x 2 | MAP 16 L240 | 40 x 2 |
| with pegs and aluminium cover ¹⁾ | CHP 16 CS | 21 | MHP 16 CS25 | 25 | | | | |
| with pegs and aluminium cover ¹⁾ | CHP 16 CS2 | 21 x 2 | MHP 16 CS225 | 25 x 2 | | | | |
| with pegs and aluminium cover, high construction ¹⁾ | CAP 16 CS | 21 | MAP 16 CS32 | 32 | | | | |
| with pegs and aluminium cover, high construction ¹⁾ | CAP 16 CS2 | 21 x 2 | MAP 16 CS232 | 32 x 2 | | | | |
| with pegs and aluminium cover, high construction ¹⁾ | CAP 16 CS29 | 29 | MAP 16 CS40 | 40 | | | | |
| with pegs and aluminium cover, high construction ¹⁾ | CAP 16 CS229 | 29 x 2 | MAP 16 CS240 | 40 x 2 | | | | |
| with pegs and plastic cover ¹⁾ | CHP 16 CP | 21 | MHP 16 CP25 | 25 | | | | |
| with pegs and plastic cover ¹⁾ | CHP 16 CP2 | 21 x 2 | MHP 16 CP225 | 25 x 2 | | | | |
| with pegs and plastic cover, high construction ¹⁾ | CAP 16 CP | 21 | MAP 16 CP32 | 32 | | | | |
| with pegs and plastic cover, high construction ¹⁾ | CAP 16 CP2 | 21 x 2 | MAP 16 CP232 | 32 x 2 | | | | |
| with pegs and plastic cover, high construction ¹⁾ | CAP 16 CP29 | 29 | MAP 16 CP40 | 40 | | | | |
| with pegs and plastic cover, high construction ¹⁾ | CAP 16 CP229 | 29 x 2 | MAP 16 CP240 | 40 x 2 | | | | |
| with lever and cover | | | | | CHP 16 LS | 21 | MHP 16 LS25 | 25 |
| with lever and cover | | | | | CHP 16 LS2 | 21 x 2 | MHP 16 LS225 | 25 x 2 |
| with lever and cover, high construction | | | | | CAP 16 LS | 21 | MAP 16 LS32 | 32 |
| with lever and cover, high construction | | | | | CAP 16 LS2 | 21 x 2 | MAP 16 LS232 | 32 x 2 |
| with lever and cover, high construction | | | | | CAP 16 LS29 | 29 | MAP 16 LS40 | 40 |
| with lever and cover, high construction | | | | | CAP 16 LS229 | 29 x 2 | MAP 16 LS240 | 40 x 2 |

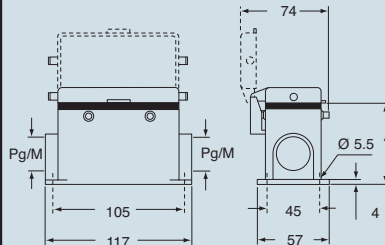
¹⁾ May be combined with hoods:
- CHO/CAO 16 X and CHV/CAV 16 X
- MHO/MAO 16 X and MHV/MAV 16 X
N.B.: the enclosures ensure IP66 protection (or IP65 cover versions) rating when mated and locked with the closing levers.
The cover (CS, CP) only ensures mechanical protection, but does not ensure IP65 protection rating.

dimensions in mm

CHP - CAP and MHP - MAP



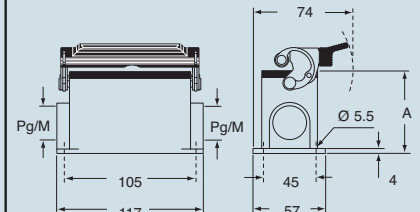
CHP CS/CP - CAP CS/CP and MHP CS/CP - MAP CS/CP



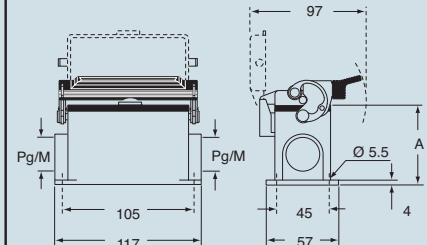
| type | A |
|-----------------|----|
| CHP / MHP | 63 |
| CAP / MAP | 81 |
| CHP CS / MHP CS | 63 |
| CAP CS / MAP CS | 81 |
| CHP CP / MHP CP | 63 |
| CAP CP / MAP CP | 81 |

dimensions in mm

CHP L - CAP L and MHP L - MAP L



CHP LS - CAP LS and MHP LS - MAP LS



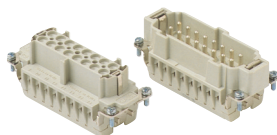
| type | A |
|-----------------|----|
| CHP L / MHP L | 63 |
| CAP L / MAP L | 81 |
| CHP LS / MHP LS | 63 |
| CAP LS / MAP LS | 81 |

CAV[®] US Type 4/4X/12
(excluding enclosures with plastic cover)

dimensions shown are not binding
and may be changed without notice

HEAVY DUTY MULTIPOLE CONNECTORS

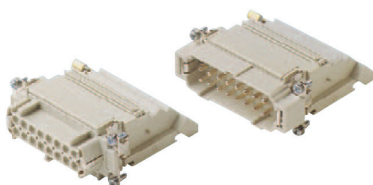
Inserts



Series E 16 poles + $\frac{1}{2}$ 16A max - 600V

| Part # | Screw Terminal with wire protection | OEM Part # |
|--------|-------------------------------------|------------|
| E16RS | female inserts | CNEF 16 T |
| E16PS | male inserts | CNEM 16 T |
| Part # | Cage Clamp | OEM Part # |
| E16RG | female inserts | CSF 16 |
| E16PG | male inserts | CSM 16 |

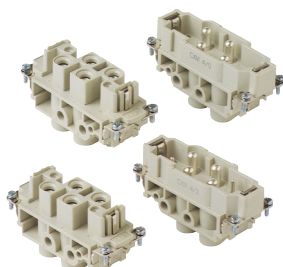
Wire conductor range: 20 ÷ 12 AWG



Series E-TB 16 poles + $\frac{1}{2}$ 16A max - 600V

| Part # | Terminal Block Inserts Screw Terminal Connection |
|-----------|--|
| E16RS-TBL | female inserts with female contacts (left mounting) |
| E16RS-TBR | female inserts with female contacts (right mounting) |
| E16PS-TBL | male inserts with male contacts (left mounting) |
| E16PS-TBR | male inserts with male contacts (right mounting) |

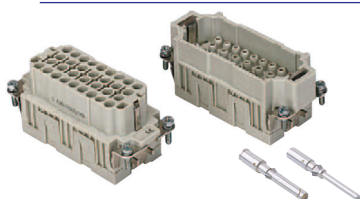
Wire conductor range: 18 ÷ 14 AWG



Series MP 4 poles + $\frac{1}{2}$ 80A max - 600V 4 + 2 poles + $\frac{1}{2}$ 80A max - 600V + 16A max - 600V

| Part # | Screw Terminal | OEM Part # |
|---------|----------------|------------|
| MP4/0RS | female inserts | CXF 4/0 |
| MP4/0PS | male inserts | CXM 4/0 |
| MP4/2RS | female inserts | CXF 4/2 |
| MP4/2PS | male inserts | CXM 4/2 |

Wire conductor range: 80A/12 ÷ 6 AWG / 16A/18 ÷ 14 AWG

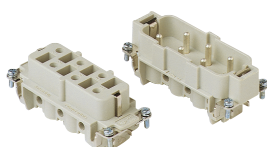


Series EQ 32 poles + $\frac{1}{2}$ 16A max - 600V

| Part # | Inserts, Crimp Connections |
|--------|------------------------------------|
| EQ32RC | female inserts for female contacts |
| EQ32PC | male inserts for male contacts |

16A Crimp Contacts must be ordered separately

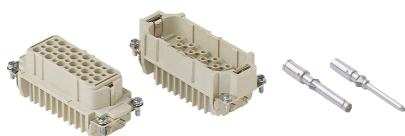
Wire conductor range: 20 ÷ 12 AWG



Series S 6 poles + $\frac{1}{2}$ 35A max - 600V

| Part # | Screw Terminal | OEM Part # |
|--------|----------------|------------|
| S06RS | female inserts | CPF 06 |
| S06PS | male inserts | CPM 06 |

Wire conductor range: 16 ÷ 10 AWG



Series D 40 poles + $\frac{1}{2}$ 10A max - 600V

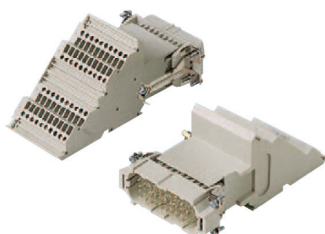
| Part # | Crimp Terminal | OEM Part # |
|--------|----------------|------------|
| D40RC | female inserts | CDF 40 |
| D40PC | male inserts | CDM 40 |

Wire conductor range: 22 ÷ 14 AWG

10A Crimp Contacts must be ordered separately

HEAVY DUTY MULTIPOLE CONNECTORS

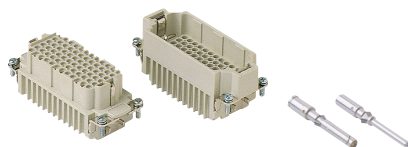
Inserts



Series D-TB **40 poles + $\frac{1}{2}$ 10A max - 600V**

| Part # | Terminal Block Inserts Screw Terminal Connection |
|-----------|--|
| D40RS-TBL | female inserts with female contacts (left mounting) |
| D40RS-TBR | female inserts with female contacts (right mounting) |
| D40PS-TBL | male inserts with male contacts (left mounting) |
| D40PS-TBR | male inserts with male contacts (right mounting) |

Wire conductor range: 18 ÷ 14 AWG

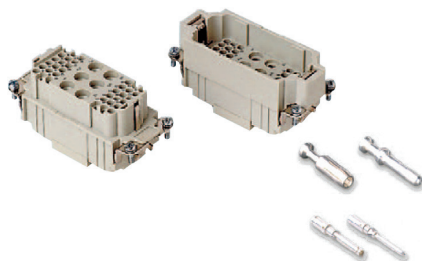


Series DD **72 poles + $\frac{1}{2}$ 10A max - 600V**

| Part # | Crimp Terminal | OEM Part # |
|--------|----------------|------------|
| DD72RC | female inserts | CDDF 72 |
| DD72PC | male inserts | CDDM 72 |

Wire conductor range: 22 ÷ 14 AWG

10A Crimp Contacts must be ordered separately

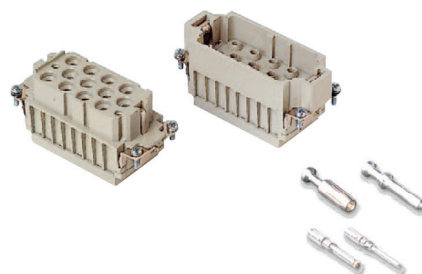


Series SA **6 poles (40A max-690V)
+ 36 poles (10A max-250V) + $\frac{1}{2}$**

| Part # | Inserts, Crimp Connections |
|----------|------------------------------------|
| SA6/36RC | female inserts for female contacts |
| SA6/36C | male inserts for male contacts |

Wire conductor range: 10A/22 ÷ 14 AWG, 40A/16 ÷ 10 AWG

40A and 10A Crimp Contacts must be ordered separately



Series SA **12 poles (40A max-500V/6kV/3)
+ 2 poles (10A max-250V/4kV/3) + $\frac{1}{2}$**

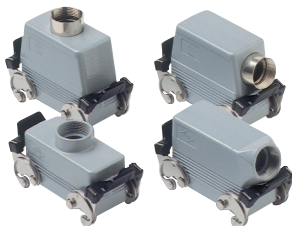
| Part # | Inserts, Crimp Connections |
|----------|------------------------------------|
| SA12/2RC | female inserts for female contacts |
| SA12/2PC | male inserts for male contacts |

Wire conductor range: 10A/22 ÷ 14 AWG, 40A/16 ÷ 10 AWG

40A and 10A Crimp Contacts must be ordered separately

HEAVY DUTY MULTIPOLE CONNECTORS

Hoods



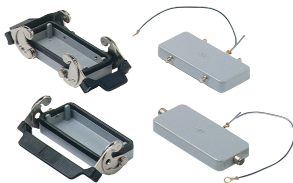
Series E 16 poles + $\frac{1}{2}$

| Pg | Part # | Pg | NPT Part # | NPT | Hoods | OEM Part # |
|----|-----------|----|------------|------|--|------------|
| | ESEP16D5 | 21 | ESEP16D11 | 3/4" | four pegs, side entry | CHO 16 |
| | ESTP16D5 | 21 | ESTP16D11 | 3/4" | four pegs, side entry, high construction | CAO 16.21 |
| | ESTP16D6 | 29 | ESTP16D12 | 1" | four pegs, side entry, high construction | CAO 16.29 |
| | ETEP16D5 | 21 | ETEP16D11 | 3/4" | four pegs, top entry | CHV 16 |
| | ETTP16D5 | 21 | ETTP16D11 | 3/4" | four pegs, top entry, high construction | CAV 16.21 |
| | ETTP16D6 | 29 | ETTP16D12 | 1" | four pegs, top entry, high construction | CAV 16.29 |
| | EFEP16D5* | 21 | EFEP16D11* | 3/4" | four pegs, front entry, high construction | CAF 16 |
| | ECC16D5 | 21 | ECC16D11 | 3/4" | double levers, top entry, cable coupler | CHV 16 G |
| | ECC16D6 | 29 | ECC16D12 | 1" | double levers, top entry, cable coupler, high construction | CAV 16 G29 |

| | | | | | | |
|--|----------|----|-----------|------|---|-------------|
| | ESEP16S5 | 21 | ESEP16S11 | 3/4" | two pegs, side entry | CHO 16 L |
| | ESTP16S5 | 21 | ESTP16S11 | 3/4" | two pegs, side entry, high construction | CAO 16 L21 |
| | ESTP16S6 | 29 | ESTP16S12 | 1" | two pegs, side entry, high construction | CAO 16 L29 |
| | ETEP16S5 | 21 | ETEP16S11 | 3/4" | two pegs, top entry | CHV 16 L |
| | ETTP16S5 | 21 | ETTP16S11 | 3/4" | two pegs, top entry, high construction | CAV 16 L21 |
| | ETTP16S6 | 29 | ETTP16S12 | 1" | two pegs, top entry, high construction | CAV 16 L29 |
| | ECC16S5 | 21 | ECC16S11 | 3/4" | single lever, top entry, cable coupler | CHV 16 LG |
| | ECC16S6 | 29 | ECC16S12 | 1" | single lever, top entry, cable coupler, high construction | CAV 16 LG29 |

| | | | | | | |
|--|----------|----|-----------|------|--|------------|
| | ESEL16D5 | 21 | ESEL16D11 | 3/4" | double levers, side entry | CHO 16 X |
| | ESTL16D5 | 21 | ESTL16D11 | 3/4" | double levers, side entry, high construction | CAO 16 X |
| | ESTL16D6 | 29 | ESTL16D12 | 1" | double levers, side entry, high construction | CAO 16 X29 |
| | ETEL16D5 | 21 | ETEL16D11 | 3/4" | double levers, top entry | CHV 16 X |
| | ETTL16D5 | 21 | ETTL16D11 | 3/4" | double levers, top entry, high construction | CAV 16 X |

Covers



Series E 16 poles + $\frac{1}{2}$

| Part # | Covers | OEM Part # |
|--------|---|------------|
| EP16DL | four pegs (for housings with double levers) | CHC 16 |
| EP16SL | two pegs (for housings with single lever) | CHC 16 L |
| EL16DL | double levers (for hoods with four pegs) | CHC 16 G |
| EL16SL | single lever (for hoods with two pegs) | CHC 16 LG |

* special order, consult factory for delivery

GENERAL FEATURES OF MULTIPOLE CONNECTORS FOR INDUSTRIAL PURPOSES

1 Threaded cable passage in various Pg diameters, metric diameters in accordance with EN 60423 and "NPT" diameters, for cable entry devices in accordance with EN 50262, may be located vertically, horizontally or frontally.

2 Heavy duty enclosures in die-cast aluminium alloy or self-extinguishing thermoplastic (A-03 series).

Wall mounting or bulkhead housings and hoods are available, with or without fixed covers or with mobile protection covers.

3 Metallic enclosures with a coated finish of epoxy-polyester with high resistance to mechanical stress and external agents. Enclosures used with temperatures of up to 180°C and in aggressive environments

are treated with special coatings. Where electromagnetic compatibility is necessary: EMC enclosures with high conductivity and high corrosion resistance surface treatment.

4 Inserts in self-extinguishing thermoplastic material reinforced with glass fibres, UL approved, with a limit working temperature from -40°C to +125°C.

For some series, inserts in PPS (polyphenylene sulphide) may be requested for special uses with temperatures of up to 180°C.

5 Polarized inserts with asymmetric guide rails for preventing incorrect coupling. The inserts have a mechanical duration equal to or over 500 coupling cycles.

6 Inserts manufactured in conformity with the DIN VDE 0627 standard and are certified and identified with the UL and CSA marks.

7 Special seal gaskets in vinyl nitrile elastomer or fluoro elastomer (on enclosures for use with maximum temperatures of 180°C and for aggressive environments), in antiaging, oil-resistant, fuel-resistant, together with the cable entry devices (not supplied) provide an IP66 degree of protection for coupled connectors.

Special conductive seals for EMC enclosures.

8 Stainless steel closure levers and springs guarantee a perfect closure and sealing.

9 Locking device available in two versions, simple (with one lever), or double (with two levers).

10 Various types of handles are available: in self-extinguishing, thermoplastic material reinforced with glass fibres; in die-cast aluminium (for special use with temperatures of up to 180°C); monoblock stainless steel handles (A-03 enclosures and for special uses with temperatures of up to 180°C).

11 Unlosable insert fastening screws, with antiloosening flexible washer.

12 Contacts position identified with numbers or codes on both sides of each insert and laser printed or moulded.

13 Contacts in silver or gold-plated brass (special order) with connections to the conductors made via unlosable unloosened screws, spring terminal, crimping or incorporated 45° terminal block connectors (with screw or spring terminal).

14 Earth terminal protection with wide contact surface.

15 Pegs and levers supplied with anti-friction rings that facilitate closure and limit wear and tear.

16 CE marking attesting conformity to the requirements of the Low Voltage directive 73/23/EEC and its modification 93/68/EEC.

