

# HEAVY DUTY MULTIPOLE CONNECTORS



## Bases



### Series E 10 poles + $\frac{1}{2}$

Part #	Terminal Block Inserts	Screw Terminal Connection	OEM Part #
EPML10D	double levers		CHI 10
EPMP10DC	four pegs and cover		CHI 10 CS
EPML10S	single lever		CHI 10 L
EPML10SC	single lever and cover		CHI 10 LS

Pg Part #	Pg	NPT Part #	NPT	Surface Mounting Housings	OEM Part #
ES1L10D4	16	ES1L10D10	1/2"	double levers, single port	CHP 10
ES2L10D4	16 x 2	ES2L10D10	1/2" x 2	double levers, double port	CHP 10.2
ES1L10D5	21	ES1L10D11	3/4"	double levers, single port, high construction	CAP 10.21
ES2L10D5	21 x 2	ES2L10D11	3/4" x 2	double levers, double port, high construction	CAP 10.221
ES1L10D6	29	ES1L10D12	1"	double levers, single port, high construction	CAP 10.29
ES2L10D6	29 x 2	ES2L10D12	1" x 2	double levers, double port, high construction	CAP 10.229
ES1P10DC4	16	ES1P10DC10	1/2"	four pegs and cover, single port	CHP 10 CS
ES2P10DC4	16 x 2	ES2P10DC10	1/2" x 2	four pegs and cover, double port	CHP 10 CS2
ES1P10DC5	21	ES1P10DC11	3/4"	four pegs and cover, single port, high construction	CAP 10 CS
ES2P10DC5	21 x 2	ES2P10DC11	3/4" x 2	four pegs and cover, double port, high construction	CAP 10 CS2
ES1P10DC6	29	ES1P10DC12	1"	four pegs and cover, single port, high construction	CAP 10 CS29
ES2P10DC6	29 x 2	ES2P10DC12	1" x 2	four pegs and cover, double port, high construction	CAP 10 CS229



### Series E 10 poles + $\frac{1}{2}$

Pg Part #	Pg	NPT Part #	NPT	Surface Mounting Housings	OEM Part #
ES1L10S4	16	ES1L10S10	1/2"	single lever, single port	CHP 10 L
ES2L10S4	16 x 2	ES2L10S10	1/2" x 2	single lever, double port	CHP 10 L2
ES1L10S5	21	ES1L10S11	3/4"	single lever, single port, high construction	CAP 10 L
ES2L10S5	21 x 2	ES2L10S11	3/4" x 2	single lever, double port, high construction	CAP 10 L2
ES1L10S6	29	ES1L10S12	1"	single lever, single port, high construction	CAP 10 L29
ES2L10S6	29 x 2	ES2L10S12	1" x 2	single lever, double port, high construction	CAP 10 L229
ES1L10SC4	16	ES1P10SC10	1/2"	single lever and cover, single port	CHP 10 LS
ES2L10SC4	16 x 2	ES2P10SC10	1/2" x 2	single lever and cover, double port	CHP 10 LS2
ES1L10SC5	21	ES1P10SC11	3/4"	single lever and cover, single port, high construction	CAP 10 LS
ES2L10SC5	21 x 2	ES2P10SC11	3/4" x 2	single lever and cover, double port, high construction	CAP 10 LS2
ES1L10SC6	29	ES1P10SC12	1"	single lever and cover, single port, high construction	CAP 10 LS29
ES2L10SC6	29 x 2	ES2P10SC12	1" x 2	single lever and cover, double port, high construction	CAP 10 LS229

CH - CA and MH - MA enclosures

size "57.27" standard version



insert centre distance:  
57 x 27 mm

surface mounting housings  
with 2 levers or 4 pegs



surface mounting housings  
with single lever

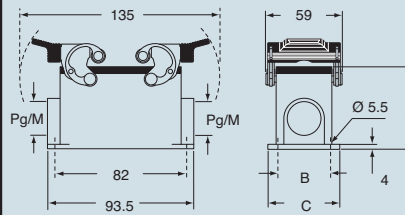


description	part No.		part No.		part No.		part No.	
	entry Pg	entry M	entry Pg	entry M	entry Pg	entry M	entry Pg	entry M
with levers	CHP 10	16	MHP 10.20	20	CHP 10 L	16	MHP 10 L20	20
with levers	CHP 10.2	16 x 2	MHP 10.220	20 x 2	CHP 10 L2	16 x 2	MHP 10 L220	20 x 2
with levers, high construction	CAP 10.21	21	MAP 10.32	32	CAP 10 L	21	MAP 10 L32	32
with levers, high construction	CAP 10.221	21 x 2	MAP 10.232	32 x 2	CAP 10 L2	21 x 2	MAP 10 L232	32 x 2
with levers, high construction	CAP 10.29	29	MAP 10.40	40	CAP 10 L29	29	MAP 10 L40	40
with levers, high construction	CAP 10.229	29 x 2	MAP 10.240	40 x 2	CAP 10 L229	29 x 2	MAP 10 L240	40 x 2
with pegs and aluminium cover <sup>1)</sup>	CHP 10 CS	16	MHP 10 CS20	20				
with pegs and aluminium cover <sup>1)</sup>	CHP 10 CS2	16 x 2	MHP 10 CS220	20 x 2				
with pegs and aluminium cover, high construction <sup>1)</sup>	CAP 10 CS	21	MAP 10 CS32	32				
with pegs and aluminium cover, high construction <sup>1)</sup>	CAP 10 CS2	21 x 2	MAP 10 CS232	32 x 2				
with pegs and aluminium cover, high construction <sup>1)</sup>	CAP 10 CS29	29	MAP 10 CS40	40				
with pegs and aluminium cover, high construction <sup>1)</sup>	CAP 10 CS229	29 x 2	MAP 10 CS240	40 x 2				
with pegs and plastic cover <sup>1)</sup>	CHP 10 CP	16	MHP 10 CP20	20				
with pegs and plastic cover <sup>1)</sup>	CHP 10 CP2	16 x 2	MHP 10 CP220	20 x 2				
with pegs and plastic cover, high construction <sup>1)</sup>	CAP 10 CP	21	MAP 10 CP32	32				
with pegs and plastic cover, high construction <sup>1)</sup>	CAP 10 CP2	21 x 2	MAP 10 CP232	32 x 2				
with pegs and plastic cover, high construction <sup>1)</sup>	CAP 10 CP29	29	MAP 10 CP40	40				
with pegs and plastic cover, high construction <sup>1)</sup>	CAP 10 CP229	29 x 2	MAP 10 CP240	40 x 2				
with lever and cover					CHP 10 LS	16	MHP 10 LS20	20
with lever and cover					CHP 10 LS2	16 x 2	MHP 10 LS220	20 x 2
with lever and cover, high construction					CAP 10 LS	21	MAP 10 LS32	32
with lever and cover, high construction					CAP 10 LS2	21 x 2	MAP 10 LS232	32 x 2
with lever and cover, high construction					CAP 10 LS29	29	MAP 10 LS40	40
with lever and cover, high construction					CAP 10 LS229	29 x 2	MAP 10 LS240	40 x 2

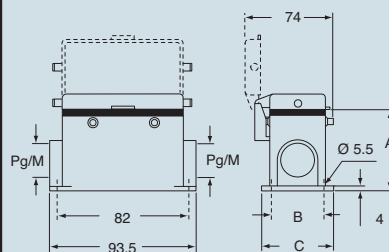
<sup>1)</sup> May be combined with hoods:  
- CHO/CAO 10 X and CHV/CAV 10 X  
- MHO/MAO 10 X and MHV/MAV 10 X

**N.B.:** the enclosures ensure IP66 protection (or IP65 cover versions) rating when mated and locked with the closing levers.  
The cover (CS, CP) only ensures mechanical protection, but does not ensure IP65 protection rating.

dimensions in mm  
CHP - CAP and MHP - MAP

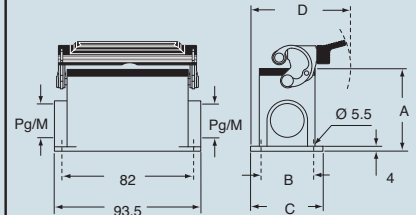


CHP CS/CP - CAP CS/CP and MHP CS/CP - MAP CS/CP

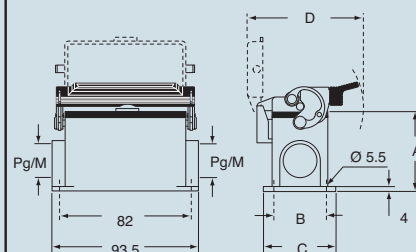


type	A	B	C
CHP / MHP	57	40	52
CAP / MAP	74	45	57
CHP CS / MHP CS	57	40	52
CAP CS / MAP CS	74	45	57
CHP CP / MHP CP	57	40	52
CAP CP / MAP CP	74	45	57

dimensions in mm  
CHP L - CAP L and MHP L - MAP L



CHP LS - CAP LS and MHP LS - MAP LS



type	A	B	C	D
CHP L / MHP L	57	40	52	79.5
CAP L / MAP L	74	45	57	82
CHP LS / MHP LS	57	40	52	97
CAP LS / MAP LS	74	45	57	97

**CAVUS**® Type 4/4X/12  
(excluding enclosures with plastic cover)

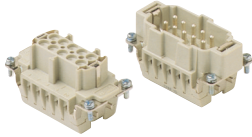
dimensions shown are not binding and may be changed without notice

size 57.27



# HEAVY DUTY MULTIPOLE CONNECTORS

## Inserts

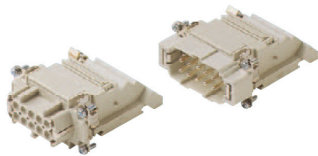


### Series E 10 poles + $\frac{1}{2}$ 16A max - 600V

Part #	Screw Terminal with wire protection	OEM Part #
E10RS	female inserts	CNEF 10 T
E10PS	male inserts	CNEM 10 T

Part #	Cage Clamp	OEM Part #
E10RG	female inserts	CSEF 10
E10PG	male inserts	CSEM 10

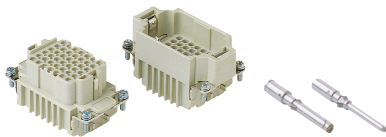
Wire conductor range: 20 ÷ 12 AWG



### Series E-TB 10 poles + $\frac{1}{2}$ 16A max - 600V

Part #	Terminal Block Inserts Screw Terminal Connection
E10RS-TBL	female inserts with female contacts (left mounting)
E10RS-TBR	female inserts with female contacts (right mounting)
E10PS-TBL	male inserts with male contacts (left mounting)
E10PS-TBR	male inserts with male contacts (right mounting)

Wire conductor range: 18 ÷ 14 AWG

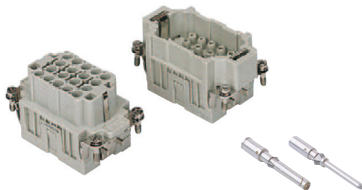


### Series DD 42 poles + $\frac{1}{2}$ 10A max - 600V

Part #	Crimp Terminal	OEM Part #
DD42RC	female inserts	CDDF 42
DD42PC	male inserts	CDDM 42

Wire conductor range: 22 ÷ 14 AWG

10A Crimp Contacts must be ordered separately

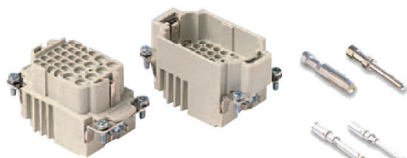


### Series EQ 18 poles + $\frac{1}{2}$ 16A max - 600V

Part #	Inserts, Crimp Connections
EQ18RC	female inserts for female contacts
EQ18PC	male inserts for male contacts

Wire conductor range: 20 ÷ 12 AWG

16A Crimp Contacts must be ordered separately, see page B-28



### Series EA 8 poles (16A max-400V) + 24 poles (10A max-250V) + $\frac{1}{2}$

Part #	Inserts, Crimp Connections
EA8/24RC	female inserts for female contacts
EA8/24PC	male inserts for male contacts

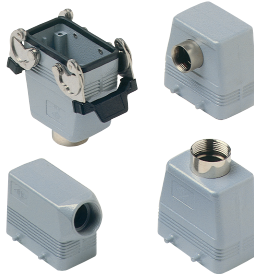
Wire conductor range: 10A/22 ÷ 14 AWG, 16A/20 ÷ 12 AWG

16A and 10A Crimp Contacts must be ordered separately



# HEAVY DUTY MULTIPOLE CONNECTORS

## Hoods

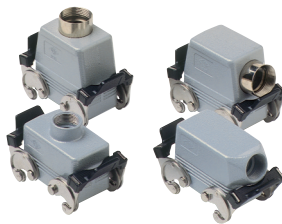


### Series E 10 poles + ⚡

Pg	Part #	Pg	NPT Part #	NPT	Hoods	OEM Part #
	<b>ESEP10D4</b>	16	<b>ESEP10D10</b>	1/2"	four pegs, side entry	<b>CHO 10</b>
	<b>ESTP10D5</b>	21	<b>ESTP10D11</b>	3/4"	four pegs, side entry, high construction	<b>CAO 10.21</b>
	<b>ESTP10D6</b>	29	<b>ESTP10D12</b>	1"	four pegs, side entry, high construction	<b>CAO 10.29</b>
	<b>ETEP10D4</b>	16	<b>ETEP10D10</b>	1/2"	four pegs, top entry	<b>CHV 10</b>
	<b>ETTP10D5</b>	21	<b>ETTP10D11</b>	3/4"	four pegs, top entry, high construction	<b>CAV 10.21</b>
	<b>ETTP10D6</b>	29	<b>ETTP10D12</b>	1"	four pegs, top entry, high construction	<b>CAV 10.29</b>
	<b>EFEP10D4*</b>	16	<b>EFEP10D10*</b>	1/2"	four pegs, front entry, high construction	<b>CAF 10</b>
	<b>ECC10D4</b>	16	<b>ECC10D10</b>	1/2"	double levers, top entry, cable coupler	<b>CHV 10 G</b>
	<b>ECC10D5</b>	21	<b>ECC10D11</b>	3/4"	double levers, top entry, cable coupler, high construction	<b>CAV 10 G</b>
	<b>ECC10D6</b>	29	<b>ECC10D12</b>	1"	double levers, top entry, cable coupler, high construction	<b>CAV 10 G29</b>

	<b>ESEP10S4</b>	16	<b>ESEP10S10</b>	1/2"	two pegs, side entry	<b>CHO 10 L</b>
	<b>ESTP10S5</b>	21	<b>ESTP10S11</b>	3/4"	two pegs, side entry, high construction	<b>CAO 10 L21</b>
	<b>ESTP10S6</b>	29	<b>ESTP10S12</b>	1"	two pegs, side entry, high construction	<b>CAO 10 L29</b>
	<b>ETEP10S4</b>	16	<b>ETEP10S10</b>	1/2"	two pegs, top entry	<b>CHV 10 L</b>
	<b>ETTP10S5</b>	21	<b>ETTP10S11</b>	3/4"	two pegs, top entry, high construction	<b>CAV 10 L21</b>
	<b>ETTP10S6</b>	29	<b>ETTP10S12</b>	1"	two pegs, top entry, high construction	<b>CAV 10 L29</b>
	<b>ECC10S4</b>	16	<b>ECC10S10</b>	1/2"	single lever, top entry, cable coupler	<b>CHV 10 LG</b>
	<b>ECC10S5</b>	21	<b>ECC10S11</b>	3/4"	single lever, top entry, cable coupler, high construction	<b>CAV 10 LG21</b>
	<b>ECC10S6</b>	29	<b>ECC10S12</b>	1"	single lever, top entry, cable coupler, high construction	<b>CAV 10 LG29</b>

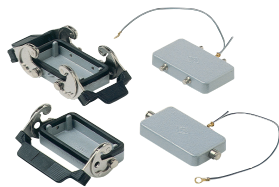
\* special order, consult factory for delivery



### Series E 10 poles + ⚡

Pg	Part #	Pg	NPT Part #	NPT	Hoods	OEM Part #
	<b>ESEL10D4</b>	16	<b>ESEL10D10</b>	1/2"	double levers, side entry	<b>CHO 10 X</b>
	<b>ESTL10D5</b>	21	<b>ESTL10D11</b>	3/4"	double levers, side entry, high construction	<b>CAO 10 X</b>
	<b>ESTL10D6</b>	29	<b>ESTL10D12</b>	1"	double levers, side entry, high construction	<b>CAO 10 X29</b>
	<b>ETEL10D4</b>	16	<b>ETEL10D10</b>	1/2"	double levers, top entry	<b>CHV 10 X</b>
	<b>ETTL10D5</b>	21	<b>ETTL10D11</b>	3/4"	double levers, top entry, high construction	<b>CAV 10 X</b>
	<b>ETTL10D6</b>	29	<b>ETTL10D12</b>	1"	double levers, top entry, high construction	<b>CAV 10 X29</b>

## Covers



### Series E 10 poles + ⚡

Part #	Covers	OEM Part #
<b>EP10DL</b>	four pegs (for housings with double levers)	<b>CHC 10</b>
<b>EP10SL</b>	two pegs (for housings with single lever)	<b>CHC 10 L</b>
<b>EL10DL</b>	double levers (for hoods with four pegs)	<b>CHC 10 G</b>
<b>EL10SL</b>	single lever (for hoods with two pegs)	<b>CHC 10 LG</b>



# GENERAL FEATURES OF MULTIPOLE CONNECTORS FOR INDUSTRIAL PURPOSES

- 1 Threaded cable passage in various Pg diameters, metric diameters in accordance with EN 60423 and "NPT" diameters, for cable entry devices in accordance with EN 50262, may be located vertically, horizontally or frontally.
- 2 Heavy duty enclosures in die-cast aluminium alloy or self-extinguishing thermoplastic (A-03 series).  
Wall mounting or bulkhead housings and hoods are available, with or without fixed covers or with mobile protection covers.
- 3 Metallic enclosures with a coated finish of epoxy-polyester with high resistance to mechanical stress and external agents. Enclosures used with temperatures of up to 180°C and in aggressive environments

are treated with special coatings. Where electromagnetic compatibility is necessary: EMC enclosures with high conductivity and high corrosion resistance surface treatment.

- 4 Inserts in self-extinguishing thermoplastic material reinforced with glass fibres, UL approved, with a limit working temperature from -40°C to +125°C. For some series, inserts in PPS (polyphenylene sulphide) may be requested for special uses with temperatures of up to 180°C.
- 5 Polarized inserts with asymmetric guide rails for preventing incorrect coupling. The inserts have a mechanical duration equal to or over 500 coupling cycles.

- 6 Inserts manufactured in conformity with the DIN VDE 0627 standard and are certified and identified with the UL and CSA marks.
- 7 Special seal gaskets in vinyl nitrile elastomer or fluoro elastomer (on enclosures for use with maximum temperatures of 180°C and for aggressive environments), in antiaging, oil-resistant, fuel-resistant, together with the cable entry devices (not supplied) provide an IP66 degree of protection for coupled connectors.  
Special conductive seals for EMC enclosures.
- 8 Stainless steel closure levers and springs guarantee a perfect closure and sealing.
- 9 Locking device available in two versions, simple (with one lever), or double (with two levers).

- 10 Various types of handles are available: in self-extinguishing, thermoplastic material reinforced with glass fibres; in die-cast aluminium (for special use with temperatures of up to 180°C); monoblock stainless steel handles (A-03 enclosures and for special uses with temperatures of up to 180°C).
- 11 Unlosable insert fastening screws, with antiloosening flexible washer.
- 12 Contacts position identified with numbers or codes on both sides of each insert and laser printed or moulded.
- 13 Contacts in silver or gold-plated brass (special order) with connections to the conductors made via unlosable unloosened screws, spring terminal, crimping or incorporated 45° terminal block connectors (with screw or spring terminal).
- 14 Earth terminal protection with wide contact surface.
- 15 Pegs and levers supplied with anti-friction rings that facilitate closure and limit wear and tear.
- 16 CE marking attesting conformity to the requirements of the Low Voltage directive 73/23/EEC and its modification 93/68/EEC.

