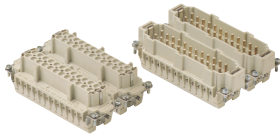


# HEAVY DUTY MULTIPOLE CONNECTORS



## Inserts



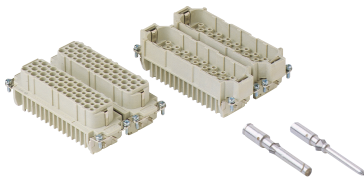
### Series E 48 poles + $\frac{1}{2}$ 16A max - 600V

Part #	Screw Terminal with wire protection	OEM Part #
E24RS + E48RS	female inserts, No. (1 ÷ 24) and (25 ÷ 48)	CNEF 24 TN
E24PS + E48PS	male inserts, No. (1 ÷ 24) and (25 ÷ 48)	CNEM 24 TN

+ Both part numbers **must** be ordered separately

Part #	Cage Clamp	OEM Part #
E24RG + E48RG	female inserts, No. (1 ÷ 24) and (25 ÷ 48)	CSEF 24 N
E24PG + E48PG	male inserts, No. (1 ÷ 24) and (25 ÷ 48)	CSEM 24 N

+ Both part numbers **must** be ordered separately Wire conductor range: 20 ÷ 12 AWG

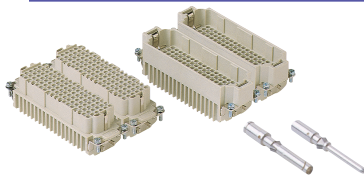


### Series D 128 poles + $\frac{1}{2}$ 10A max - 600V

Part #	Crimp Terminal	OEM Part #
D64RC(x2)	female inserts, No. (1 ÷ 64)	CDF 64
D64PC(x2)	male inserts, No. (1 ÷ 64)	CDM 64

10A Crimp Contacts must be ordered separately

Wire conductor range: 22 ÷ 14 AWG

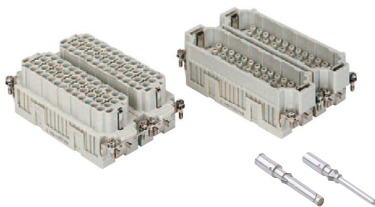


### Series DD 216 poles + $\frac{1}{2}$ 10A max - 600V

Part #	Crimp Terminal	OEM Part #
DD108RC DD216RC	female inserts, No. (1 ÷ 108) and (109 ÷ 216)	CDDF 108
DD108PC DD216PC	male inserts, No. (1 ÷ 108) and (109 ÷ 216)	CDDM 108

10A Crimp Contacts must be ordered separately, see page B-28

Wire conductor range: 22 ÷ 14 AWG



### Series EQ 92 poles + $\frac{1}{2}$ 16A max - 600V

Part #	Inserts, Crimp Connections
EQ46RC + EQ92RC	female inserts, No. (1 ÷ 46) and (47 ÷ 92)
EQ46PC + EQ92PC	male inserts, No. (1 ÷ 46) and (47 ÷ 92)

16A Crimp Contacts must be ordered separately, see page B-28

Wire conductor range: 20 ÷ 12 AWG

## Bases



### Series E 48 poles + $\frac{1}{2}$

Part #	Panel Mounting Housings	OEM Part #
EPML48SC	single lever and cover	CHI 48 LS

Pg Part #	Pg	NPT Part #	NPT	Surface Mounting Housings	OEM Part #
ES2L48SC7	36 x 1 or 2	ES2L48SC13	1-1/4" x 1 or 2	single lever and cover, double port	CHP 48 LS
ES2L48SC6	29 x 1 or 2	ES2L48SC12	1" x 1 or 2	single lever and cover, double port	CHP 48 LS29

## Hoods



### Series E 48 poles + $\frac{1}{2}$

Pg Part #	Pg	NPT Part #	NPT	Hoods	OEM Part #
ESEP48S7	36	ESEP48S13	1-1/4"	two pegs, side entry	CHO 48 L
ESEP48S6	29	ESEP48S12	1"	two pegs, side entry	CHO 48 L29
ESEP48S8	42	ESEP48S14	1-1/2"	two pegs, side entry	CHO 48 L42
ETEP48S7	36	ETEP48S13	1-1/4"	two pegs, top entry	CHV 48 L
ETEP48S6	29	ETEP48S12	1"	two pegs, top entry	CHV 48 L29
ETEP48S8	42	ETEP48S14	1-1/2"	two pegs, top entry	CHV 48 L42

CH and MH enclosures

size "104.62" standard version



bulkhead and surface mounting housings with single lever



hoods for single lever

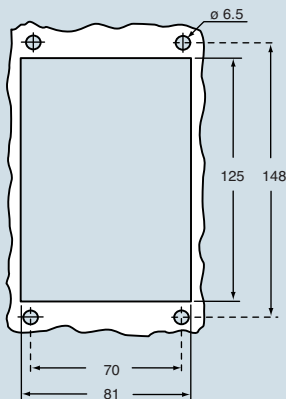


insert centre distance:  
2 x (104 x 27) mm

description	part No.	entry Pg	part No.	entry M	part No.	entry Pg	part No.	entry M
bulkhead mounting housings with lever	CHI 48 L	---						
bulkhead mounting housings with lever and cover	CHI 48 LS	---						
surface mounting housings with lever and cover	CHP 48 LS29	29 x 1/2	MHP 48 LS40	40 x 1/2				
surface mounting housings with lever and cover	CHP 48 LS	36 x 1/2	MHP 48 LS50	50 x 1/2				
with pegs, side entry					CHO 48 L29	29	MHO 48 L32	32
with pegs, side entry					CHO 48 L	36	MHO 48 L40	40
with pegs, side entry					CHO 48 L42	42	MHO 48 L50	50
with pegs, side entry, without adaptor *					CFO 48 L29	29	MFO 48 L32	32
with pegs, side entry, without adaptor *					CFO 48 L	36	MFO 48 L40	40
with pegs, side entry, without adaptor *					CFO 48 L42	42	MFO 48 L50	50
with pegs, top entry					CHV 48 L29	29	MHV 48 L32	32
with pegs, top entry					CHV 48 L	36	MHV 48 L40	40
with pegs, top entry					CHV 48 L42	42	MHV 48 L50	50
with pegs, top entry, without adaptor *					CFV 48 L29	29	MFV 48 L32	32
with pegs, top entry, without adaptor *					CFV 48 L	36	MFV 48 L40	40
with pegs, top entry, without adaptor *					CFV 48 L42	42	MFV 48 L50	50

\* enclosure without adaptor, threaded on the body, to be used only with a complete cable clamp.

panel cut-out for bulkhead mounting housings in mm



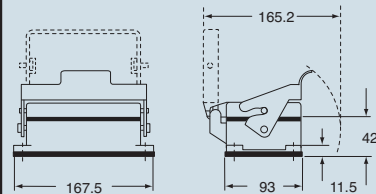
N.B.: the enclosures ensure IP66 protection (or IP65 cover versions) rating when mated and locked with the closing levers. The cover (CS, CP) only ensures mechanical protection, but does not ensure IP65 protection rating.



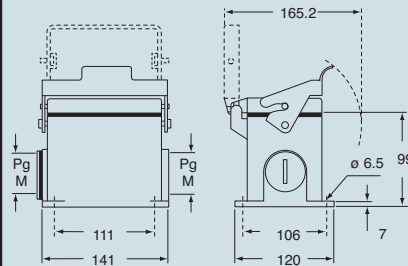
dimensions shown are not binding and may be changed without notice

dimensions in mm

CHI L - LS

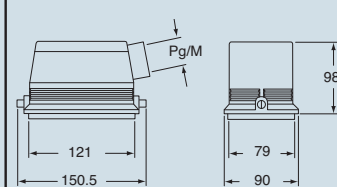


CHP LS and MHP LS

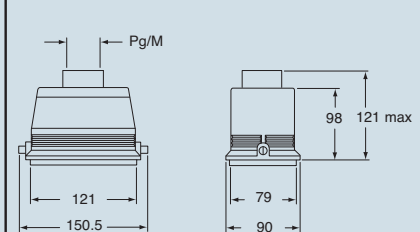


dimensions in mm

CHO/CFO L and MHO/MFO L



CHV/CFV L and MHV/MFV L



# GENERAL FEATURES OF MULTIPOLE CONNECTORS FOR INDUSTRIAL PURPOSES

- 1 Threaded cable passage in various Pg diameters, metric diameters in accordance with EN 60423 and "NPT" diameters, for cable entry devices in accordance with EN 50262, may be located vertically, horizontally or frontally.
- 2 Heavy duty enclosures in die-cast aluminium alloy or self-extinguishing thermoplastic (A-03 series).  
Wall mounting or bulkhead housings and hoods are available, with or without fixed covers or with mobile protection covers.
- 3 Metallic enclosures with a coated finish of epoxy-polyester with high resistance to mechanical stress and external agents. Enclosures used with temperatures of up to 180°C and in aggressive environments

are treated with special coatings. Where electromagnetic compatibility is necessary: EMC enclosures with high conductivity and high corrosion resistance surface treatment.

- 4 Inserts in self-extinguishing thermoplastic material reinforced with glass fibres, UL approved, with a limit working temperature from -40°C to +125°C. For some series, inserts in PPS (polyphenylene sulphide) may be requested for special uses with temperatures of up to 180°C.
- 5 Polarized inserts with asymmetric guide rails for preventing incorrect coupling. The inserts have a mechanical duration equal to or over 500 coupling cycles.

- 6 Inserts manufactured in conformity with the DIN VDE 0627 standard and are certified and identified with the UL and CSA marks.

- 7 Special seal gaskets in vinyl nitrile elastomer or fluoro elastomer (on enclosures for use with maximum temperatures of 180°C and for aggressive environments), in antiaging, oil-resistant, fuel-resistant, together with the cable entry devices (not supplied) provide an IP66 degree of protection for coupled connectors.

Special conductive seals for EMC enclosures.

- 8 Stainless steel closure levers and springs guarantee a perfect closure and sealing.

- 9 Locking device available in two versions, simple (with one lever), or double (with two levers).

- 10 Various types of handles are available: in self-extinguishing, thermoplastic material reinforced with glass fibres; in die-cast aluminium (for special use with temperatures of up to 180°C); monoblock stainless steel handles (A-03 enclosures and for special uses with temperatures of up to 180°C).

- 11 Unlosable insert fastening screws, with antiloosening flexible washer.

- 12 Contacts position identified with numbers or codes on both sides of each insert and laser printed or moulded.

- 13 Contacts in silver or gold-plated brass (special order) with connections to the conductors made via unlosable unloosened screws, spring terminal, crimping or incorporated 45° terminal block connectors (with screw or spring terminal).

- 14 Earth terminal protection with wide contact surface.

- 15 Pegs and levers supplied with anti-friction rings that facilitate closure and limit wear and tear.

- 16 CE marking attesting conformity to the requirements of the Low Voltage directive 73/23/EEC and its modification 93/68/EEC.

