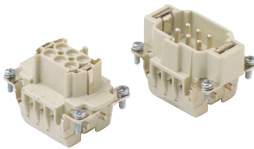


HEAVY DUTY MULTIPOLE CONNECTORS



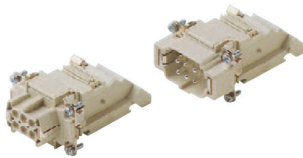
Inserts



Series E 6 poles + $\frac{1}{2}$ 16A max - 600V

Part #	Cage Clamp	OEM Part #
E06RG	female inserts	CSEF 06
E06PG	male inserts	CSEM 06
Part #	Screw Terminal with wire protection	OEM Part #
E06RS	female inserts	CNEF 06 T
E06PS	male inserts	CNEM 06 T

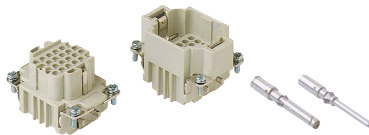
Wire conductor range: 22 ÷ 12 AWG



Series E-TB 6 poles + $\frac{1}{2}$ 16A max - 600V

Part #	Terminal Block Inserts Screw Terminal Connection
E06RS-TBL	female inserts with female contacts (left mounting)
E06RS-TBR	female inserts with female contacts (right mounting)
E06PS-TBL	male inserts with male contacts (left mounting)
E06PS-TBR	male inserts with male contacts (right mounting)

Wire conductor range: 18 ÷ 14 AWG

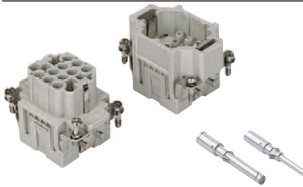


Series DD 24 poles + $\frac{1}{2}$ 10A max - 600V

Part #	Crimp Terminal	OEM Part #
DD24RC	female inserts	CDDF 24
DD24PC	male inserts	CDDM 24

Wire conductor range: 22 ÷ 14 AWG

10A Crimp Contacts must be ordered separately



Series EQ 10 poles + $\frac{1}{2}$ 16A max - 600V

Part #	Inserts, Crimp Connections
EQ10RC	female inserts for female contacts
EQ10PC	male inserts for male contacts

Wire conductor range: 20 ÷ 12 AWG

16A Crimp Contacts must be ordered separately, see page B-28

Bases



Series E 6 poles + $\frac{1}{2}$

Part #	Panel Mounting Housings	OEM Part #
EPML06S	single lever	CHI 06 L
EPML06SC	single lever with cover	CHI 06 LS
EPMP06SC	two pegs with cover	CHI 06 LCS

Pg Part #	Pg	NPT Part #	NPT	Surface Mounting Housings	OEM Part #
ES1L06S4	16	ES1L06S10	1/2"	single lever, single port	CHP 06 L
ES2L06S4	16 x 2	ES2L06S10	1/2" x 2	single lever, double port	CHP 06 L 2
ES1L06S5	21	ES1L06S11	3/4"	single lever, single port, high construction	CAP 06 L
ES2L06S5	21 x 2	ES2L06S11	3/4" x 2	single lever, double port, high construction	CAP 06 L 2
ES1L06S6	29	ES1L06S12	1"	single lever, single port, high construction	CAP 06 L 29
ES2L06S6	29 x 2	ES2L06S12	1" x 2	single lever, double port, high construction	CAP 06 L 229
ES1L06SC4	16	ES1L06SC10	1/2"	single lever and cover, single port	CHP 06 LS
ES2L06SC4	16 x 2	ES2L06SC10	1/2" x 2	single lever and cover, double port	CHP 06 LS2
ES1L06SC5	21	ES1L06SC11	3/4"	single lever and cover, single port, high construction	CAP 06 LS
ES2L06SC5	21 x 2	ES2L06SC11	3/4" x 2	single lever and cover, double port, high construction	CAP 06 LS 2
ES1L06SC6	29	ES1L06SC12	1"	single lever and cover, single port, high construction	CAP 06 LS 29
ES2L06SC6	29 x 2	ES2L06SC12	1" x 2	single lever and cover, double port, high construction	CAP 06 LS 229

CH enclosures

size "44.27" standard version



insert centre distance:
44 x 27 mm

bulkhead mounting housings
with single lever



bulkhead mounting housings
with 2 pegs

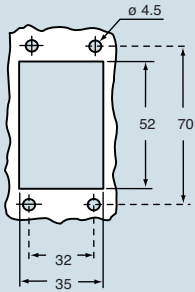


description	part No.	part No.
with lever	CHI 06 L	
with lever and cover	CHI 06 LS	
with pegs ¹⁾		CHI 06 LC
with pegs and aluminium cover ¹⁾		CHI 06 LCS
with pegs and plastic cover ¹⁾		CHI 06 LCP

¹⁾ May be combined with hoods:
- CHO/CHV 06 LX
- MHO/MHV 06 LX

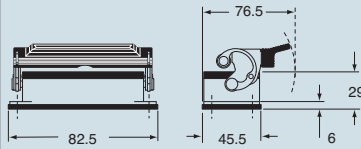
N.B.: the enclosures ensure IP66 protection (or IP65 cover versions) rating when mated and locked with the closing levers.
The cover (CS, CP) only ensures mechanical protection, but does not ensure IP65 protection rating.

panel cut-out for bulkhead mounting housings in mm

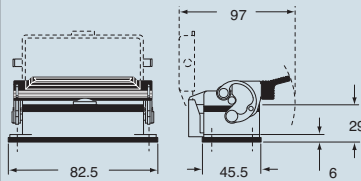


dimensions in mm

CHI L

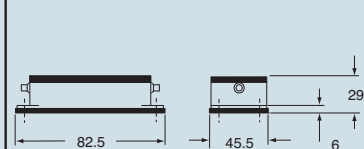


CHI LS

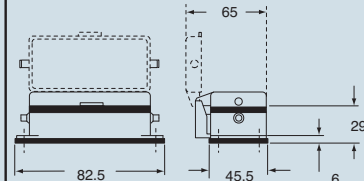


dimensions in mm

CHI LC



CHI LCS/LCP



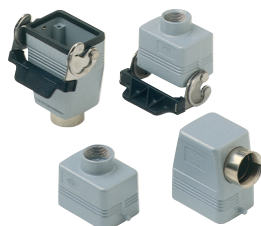
CALUS® Type 4/4X/12
(excluding enclosures with plastic cover)

dimensions shown are not binding
and may be changed without notice

HEAVY DUTY MULTIPOLE CONNECTORS



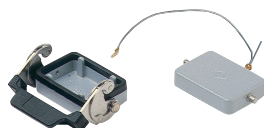
Hoods



Series E 6 poles + ⚡

Pg Part #	Pg	NPT Part #	NPT	Hoods	OEM Part #
ESEP06S3	13.5	ESEP06S10	1/2"	two pegs, side entry	CHO 06 L 13
ESEP06S4	16	ESEP06S10	1/2"	two pegs, side entry	CHO 06 L 16
ESTP06S5	21	ESTP06S11	3/4"	two pegs, side entry, high construction	CAO 06 L 21
ESTP06S6	29	ESTP06S12	1"	two pegs, side entry, high construction	CAO 06 L 29
ETEP06S3	13.5	ETEP06S10	1/2"	two pegs, top entry	CHV 06 L 13
ETEP06S4	16	ETEP06S10	1/2"	two pegs, top entry	CHV 06 L 16
ETTP06S5	21	ETTP06S11	3/4"	two pegs, top entry, high construction	CAV 06 L 21
ETTP06S6	29	ETTP06S12	1"	two pegs, top entry, high construction	CAV 06 L 29
ESEL06S4*	16	ESEL06S10*	1/2"	single lever, side entry	CHO 06 LX 16
ETEL06S4*	16	ETEL06S10*	1/2"	single lever, top entry	CHV 06 LX 16
ECC06S4	16	ECC06S10	1/2"	single lever, top entry, cable coupler	CHV 06 LG
ECC06S5	21	ECC06S11	3/4"	single lever, top entry, cable coupler, high construction	CAV 06 LG 21
ECC06S6	29	ECC06S12	1"	single lever, top entry, cable coupler, high construction	CAV 06 LG 29

Covers



Series E 6 poles + ⚡

Part #	Covers	OEM Part #
EP06SL	two pegs for (for housings with single lever)	CHC 06 L
EL06SL	single lever (for hoods with two pegs)	CHC 06 LG

* only for EPMP06SC housings

USE RDC OR BRC CONNECTORS



GENERAL FEATURES OF MULTIPOLE CONNECTORS FOR INDUSTRIAL PURPOSES

- 1 Threaded cable passage in various Pg diameters, metric diameters in accordance with EN 60423 and "NPT" diameters, for cable entry devices in accordance with EN 50262, may be located vertically, horizontally or frontally.
- 2 Heavy duty enclosures in die-cast aluminium alloy or self-extinguishing thermoplastic (A-03 series).
Wall mounting or bulkhead housings and hoods are available, with or without fixed covers or with mobile protection covers.
- 3 Metallic enclosures with a coated finish of epoxy-polyester with high resistance to mechanical stress and external agents. Enclosures used with temperatures of up to 180°C and in aggressive environments

are treated with special coatings. Where electromagnetic compatibility is necessary: EMC enclosures with high conductivity and high corrosion resistance surface treatment.

- 4 Inserts in self-extinguishing thermoplastic material reinforced with glass fibres, UL approved, with a limit working temperature from -40°C to +125°C. For some series, inserts in PPS (polyphenylene sulphide) may be requested for special uses with temperatures of up to 180°C.
- 5 Polarized inserts with asymmetric guide rails for preventing incorrect coupling. The inserts have a mechanical duration equal to or over 500 coupling cycles.

- 6 Inserts manufactured in conformity with the DIN VDE 0627 standard and are certified and identified with the UL and CSA marks.
- 7 Special seal gaskets in vinyl nitrile elastomer or fluoro elastomer (on enclosures for use with maximum temperatures of 180°C and for aggressive environments), in antiaging, oil-resistant, fuel-resistant, together with the cable entry devices (not supplied) provide an IP66 degree of protection for coupled connectors.
Special conductive seals for EMC enclosures.
- 8 Stainless steel closure levers and springs guarantee a perfect closure and sealing.
- 9 Locking device available in two versions, simple (with one lever), or double (with two levers).

- 10 Various types of handles are available: in self-extinguishing, thermoplastic material reinforced with glass fibres; in die-cast aluminium (for special use with temperatures of up to 180°C); monoblock stainless steel handles (A-03 enclosures and for special uses with temperatures of up to 180°C).
- 11 Unlosable insert fastening screws, with antiloosening flexible washer.
- 12 Contacts position identified with numbers or codes on both sides of each insert and laser printed or moulded.
- 13 Contacts in silver or gold-plated brass (special order) with connections to the conductors made via unlosable unloosened screws, spring terminal, crimping or incorporated 45° terminal block connectors (with screw or spring terminal).
- 14 Earth terminal protection with wide contact surface.
- 15 Pegs and levers supplied with anti-friction rings that facilitate closure and limit wear and tear.
- 16 CE marking attesting conformity to the requirements of the Low Voltage directive 73/23/EEC and its modification 93/68/EEC.

