

HEAVY DUTY MULTIPOLE CONNECTORS



Hoods

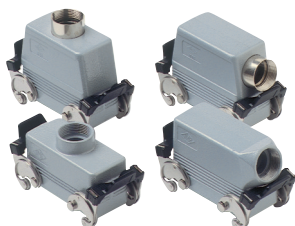
Series E 16 poles + $\frac{1}{2}$



Pg	Part #	Pg	NPT Part #	NPT	Hoods	OEM Part #
	ESEP16D5	21	ESEP16D11	3/4"	four pegs, side entry	CHO 16
	ESTP16D5	21	ESTP16D11	3/4"	four pegs, side entry, high construction	CAO 16.21
	ESTP16D6	29	ESTP16D12	1"	four pegs, side entry, high construction	CAO 16.29
	ETEP16D5	21	ETEP16D11	3/4"	four pegs, top entry	CHV 16
	ETTP16D5	21	ETTP16D11	3/4"	four pegs, top entry, high construction	CAV 16.21
	ETTP16D6	29	ETTP16D12	1"	four pegs, top entry, high construction	CAV 16.29
	EFEP16D5*	21	EFEP16D11*	3/4"	four pegs, front entry, high construction	CAF 16
	ECC16D5	21	ECC16D11	3/4"	double levers, top entry, cable coupler	CHV 16 G
	ECC16D6	29	ECC16D12	1"	double levers, top entry, cable coupler, high construction	CAV 16 G29

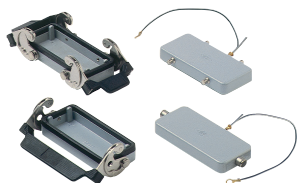


	ESEP16S5	21	ESEP16S11	3/4"	two pegs, side entry	CHO 16 L
	ESTP16S5	21	ESTP16S11	3/4"	two pegs, side entry, high construction	CAO 16 L21
	ESTP16S6	29	ESTP16S12	1"	two pegs, side entry, high construction	CAO 16 L29
	ETEP16S5	21	ETEP16S11	3/4"	two pegs, top entry	CHV 16 L
	ETTP16S5	21	ETTP16S11	3/4"	two pegs, top entry, high construction	CAV 16 L21
	ETTP16S6	29	ETTP16S12	1"	two pegs, top entry, high construction	CAV 16 L29
	ECC16S5	21	ECC16S11	3/4"	single lever, top entry, cable coupler	CHV 16 LG
	ECC16S6	29	ECC16S12	1"	single lever, top entry, cable coupler, high construction	CAV 16 LG29



	ESEL16D5	21	ESEL16D11	3/4"	double levers, side entry	CHO 16 X
	ESTL16D5	21	ESTL16D11	3/4"	double levers, side entry, high construction	CAO 16 X
	ESTL16D6	29	ESTL16D12	1"	double levers, side entry, high construction	CAO 16 X29
	ETEL16D5	21	ETEL16D11	3/4"	double levers, top entry	CHV 16 X
	ETTL16D5	21	ETTL16D11	3/4"	double levers, top entry, high construction	CAV 16 X

Covers



Series E 16 poles + $\frac{1}{2}$

Part #	Covers	OEM Part #
EP16DL	four pegs (for housings with double levers)	CHC 16
EP16SL	two pegs (for housings with single lever)	CHC 16 L
EL16DL	double levers (for hoods with four pegs)	CHC 16 G
EL16SL	single lever (for hoods with two pegs)	CHC 16 LG

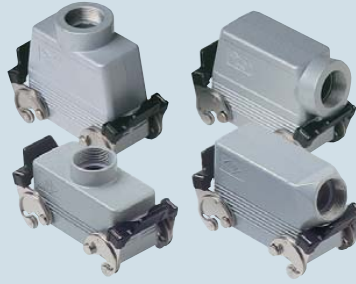
* special order, consult factory for delivery

CH - CA and MH - MA enclosures

size "77.27" standard version

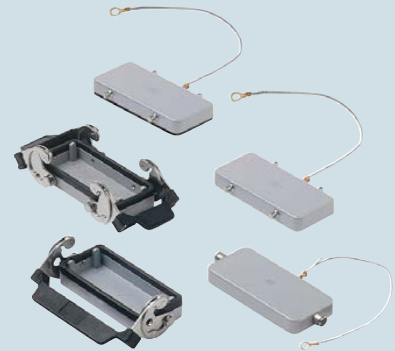


hoods with 2 levers



insert centre distance:
77.5 x 27 mm

covers



description	part No.	entry Pg	part No.	entry M	part No.
with levers, side entry ¹⁾	CHO 16 X	21	MHO 16 X25	25	
with levers, side entry ¹⁾			MHO 16 X32	32	
with levers, side entry, high construction ¹⁾	CAO 16 X	21	MAO 16 X32	32	
with levers, side entry, high construction ¹⁾	CAO 16 X29	29	MAO 16 X40	40	
with levers, top entry ¹⁾	CHV 16 X	21	MHV 16 X25	25	
with levers, top entry ¹⁾			MHV 16 X32	32	
with levers, top entry, high construction ¹⁾	CAV 16 X	21	MAV 16 X32	32	
with levers, top entry, high construction ¹⁾	CAV 16 X29	29	MAV 16 X40	40	
with 4 pegs (for housings with 2 levers with gasket)					CHC 16
with 4 pegs and gasket (for housings with 2 levers) ²⁾					CHC 16 C
with 2 pegs (for housings with 1 lever with gasket)					CHC 16 L
with 2 levers (for hoods with 4 pegs)					CHC 16 G
with 1 lever (for hoods with 2 pegs)					CHC 16 LG

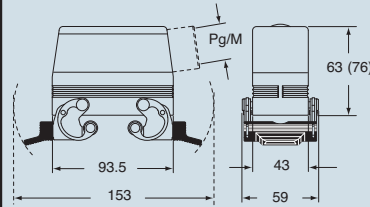
¹⁾ May be combined with housings:
- CHI/CHP/CAP 16 CS/CP/C
- MHP/MAP 16 CS/CP

²⁾ May be combined with hoods:
- CHO/CAO 16 X and CHV/CAV 16 X
- MHO/MAO 16 X and MHV/MAV 16 X

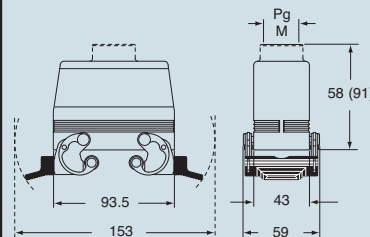
The covers for C, G and LG, versions cannot be used together with coding pins. If this application is required, please contact ILME SpA.

dimensions in mm

CHO X (CAO X) and MHO X (MAO X)

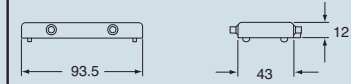


CHV X (CAV X) and MHV X (MAV X)



dimensions in mm

CHC



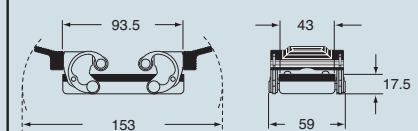
CHC C



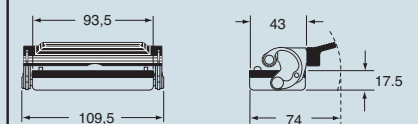
CHC L



CHC G



CHC LG

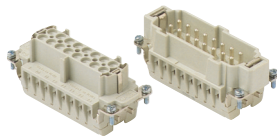


dimensions shown are not binding and may be changed without notice



HEAVY DUTY MULTIPOLE CONNECTORS

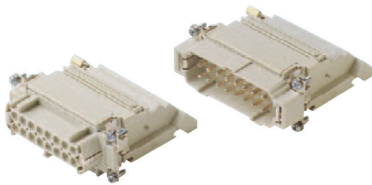
Inserts



Series E **16 poles + $\frac{1}{2}$ 16A max - 600V**

Part #	Screw Terminal with wire protection	OEM Part #
E16RS	female inserts	CNEF 16 T
E16PS	male inserts	CNEM 16 T
Part #	Cage Clamp	OEM Part #
E16RG	female inserts	CSF 16
E16PG	male inserts	CSM 16

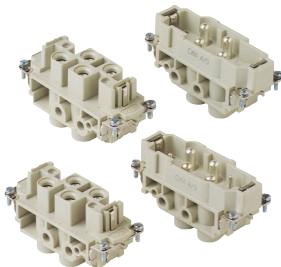
Wire conductor range: 20 ÷ 12 AWG



Series E-TB **16 poles + $\frac{1}{2}$ 16A max - 600V**

Part #	Terminal Block Inserts Screw Terminal Connection
E16RS-TBL	female inserts with female contacts (left mounting)
E16RS-TBR	female inserts with female contacts (right mounting)
E16PS-TBL	male inserts with male contacts (left mounting)
E16PS-TBR	male inserts with male contacts (right mounting)

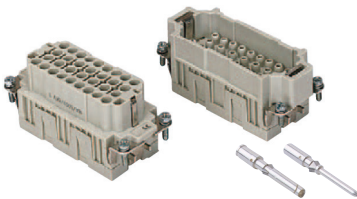
Wire conductor range: 18 ÷ 14 AWG



Series MP **4 poles + $\frac{1}{2}$ 80A max - 600V** **4+2 poles + $\frac{1}{2}$ 80A max - 600V + 16A max - 600V**

Part #	Screw Terminal	OEM Part #
MP4/0RS	female inserts	CXF 4/0
MP4/0PS	male inserts	CXM 4/0
MP4/2RS	female inserts	CXF 4/2
MP4/2PS	male inserts	CXM 4/2

Wire conductor range: 80A/12 ÷ 6 AWG / 16A/18 ÷ 14 AWG

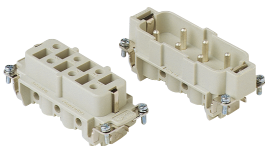


Series EQ **32 poles + $\frac{1}{2}$ 16A max - 600V**

Part #	Inserts, Crimp Connections
EQ32RC	female inserts for female contacts
EQ32PC	male inserts for male contacts

16A Crimp Contacts must be ordered separately

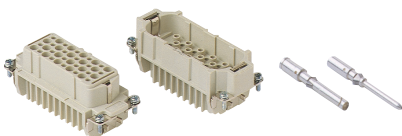
Wire conductor range: 20 ÷ 12 AWG



Series S **6 poles + $\frac{1}{2}$ 35A max - 600V**

Part #	Screw Terminal	OEM Part #
S06RS	female inserts	CPF 06
S06PS	male inserts	CPM 06

Wire conductor range: 16 ÷ 10 AWG



Series D **40 poles + $\frac{1}{2}$ 10A max - 600V**

Part #	Crimp Terminal	OEM Part #
D40RC	female inserts	CDF 40
D40PC	male inserts	CDM 40

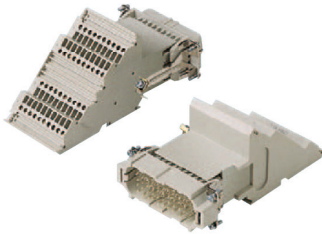
Wire conductor range: 22 ÷ 14 AWG

10A Crimp Contacts must be ordered separately



HEAVY DUTY MULTIPOLE CONNECTORS

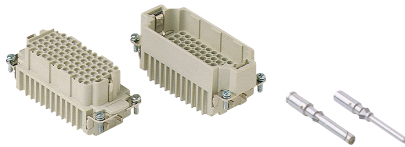
Inserts



Series D-TB **40 poles + $\frac{1}{2}$ 10A max - 600V**

Part #	Terminal Block Inserts Screw Terminal Connection
D40RS-TBL	female inserts with female contacts (left mounting)
D40RS-TBR	female inserts with female contacts (right mounting)
D40PS-TBL	male inserts with male contacts (left mounting)
D40PS-TBR	male inserts with male contacts (right mounting)

Wire conductor range: 18 ÷ 14 AWG

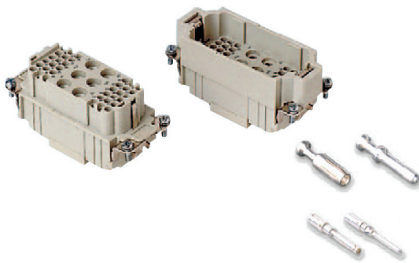


Series DD **72 poles + $\frac{1}{2}$ 10A max - 600V**

Part #	Crimp Terminal	OEM Part #
DD72RC	female inserts	CDDF 72
DD72PC	male inserts	CDDM 72

Wire conductor range: 22 ÷ 14 AWG

10A Crimp Contacts must be ordered separately

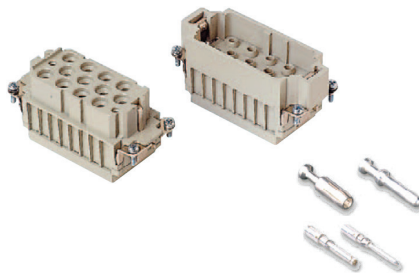


Series SA **6 poles (40A max-690V)
+ 36 poles (10A max-250V) + $\frac{1}{2}$**

Part #	Inserts, Crimp Connections
SA6/36RC	female inserts for female contacts
SA6/36C	male inserts for male contacts

Wire conductor range: 10A/22 ÷ 14 AWG, 40A/16 ÷ 10 AWG

40A and 10A Crimp Contacts must be ordered separately



Series SA **12 poles (40A max-500V/6kV/3)
+ 2 poles (10A max-250V/4kV/3) + $\frac{1}{2}$**

Part #	Inserts, Crimp Connections
SA12/2RC	female inserts for female contacts
SA12/2PC	male inserts for male contacts

Wire conductor range: 10A/22 ÷ 14 AWG, 40A/16 ÷ 10 AWG

40A and 10A Crimp Contacts must be ordered separately

HEAVY DUTY MULTIPOLE CONNECTORS



Bases



Series E **16 poles +**

Part #	Panel Mounting Housings	OEM Part #
EPML16D	double levers	CHI 16
EPMP16DC	four pegs and cover	CHI 16 CS
EPML16S	single lever	CHI 16 L
EPML16SC	single lever and cover	CHI 16 LS

Pg Part #	Pg	NPT Part #	NPT	Hoods	OEM Part #
ES1L16D5	21	ES1L16D11	3/4"	double levers, single port	CHP 16
ES2L16D5	21 x 2	ES2L16D11	3/4" x 2	double levers, double port	CHP 16.2
ES1L16D6	29	ES1L16D12	1"	double levers, single port, high construction	CAP 16.29
ES2L16D6	29 x 2	ES2L16D12	1" x 2	double levers, double port, high construction	CAP 16.229
ES1P16DC5	21	ES1P16DC11	3/4"	four pegs and cover, single port	CHP 16 CS
ES2P16DC5	21 x 2	ES2P16DC11	3/4" x 2	four pegs and cover, double port	CHP 16 CS2
ES1P16DC6	29	ES1P16DC12	1"	four pegs and cover, single port, high construction	CAP 16 CS29
ES2P16DC6	29 x 2	ES2P16DC12	1" x 2	four pegs and cover, double port, high construction	CAP 16 CS229

ES1L16S5	21	ES1L16S11	3/4"	single lever, single port	CHP 16 L
ES2L16S5	21 x 2	ES2L16S11	3/4" x 2	single lever, double port	CAP 16 LS2
ES1L16S6	29	ES1L16S12	1"	single lever, single port, high construction	CAP 16 L29
ES2L16S6	29 x 2	ES2L16S12	1" x 2	single lever, double port, high construction	CAP 16 L229
ES1L16SC5	21	ES1L16SC11	3/4"	single lever and cover, single port	CHP 16 LS
ES2L16SC5	21 x 2	ES2L16SC11	3/4" x 2	single lever and cover, double port	CHP 16 LS2
ES1L16SC6	29	ES1L16SC12	1"	single lever and cover, single port, high construction	CAP 16 LS29
ES2L16SC6	29 x 2	ES2L16SC12	1" x 2	single lever and cover, double port, high construction	CAP 16 LS229

USE RDC OR BRC CONNECTORS



GENERAL FEATURES OF MULTIPOLE CONNECTORS FOR INDUSTRIAL PURPOSES

- 1 Threaded cable passage in various Pg diameters, metric diameters in accordance with EN 60423 and "NPT" diameters, for cable entry devices in accordance with EN 50262, may be located vertically, horizontally or frontally.
- 2 Heavy duty enclosures in die-cast aluminium alloy or self-extinguishing thermoplastic (A-03 series).
Wall mounting or bulkhead housings and hoods are available, with or without fixed covers or with mobile protection covers.
- 3 Metallic enclosures with a coated finish of epoxy-polyester with high resistance to mechanical stress and external agents. Enclosures used with temperatures of up to 180°C and in aggressive environments

are treated with special coatings. Where electromagnetic compatibility is necessary: EMC enclosures with high conductivity and high corrosion resistance surface treatment.

- 4 Inserts in self-extinguishing thermoplastic material reinforced with glass fibres, UL approved, with a limit working temperature from -40°C to +125°C. For some series, inserts in PPS (polyphenylene sulphide) may be requested for special uses with temperatures of up to 180°C.
- 5 Polarized inserts with asymmetric guide rails for preventing incorrect coupling. The inserts have a mechanical duration equal to or over 500 coupling cycles.

- 6 Inserts manufactured in conformity with the DIN VDE 0627 standard and are certified and identified with the UL and CSA marks.

- 7 Special seal gaskets in vinyl nitrile elastomer or fluoro elastomer (on enclosures for use with maximum temperatures of 180°C and for aggressive environments), in antiaging, oil-resistant, fuel-resistant, together with the cable entry devices (not supplied) provide an IP66 degree of protection for coupled connectors.

Special conductive seals for EMC enclosures.

- 8 Stainless steel closure levers and springs guarantee a perfect closure and sealing.

- 9 Locking device available in two versions, simple (with one lever), or double (with two levers).

- 10 Various types of handles are available: in self-extinguishing, thermoplastic material reinforced with glass fibres; in die-cast aluminium (for special use with temperatures of up to 180°C); monoblock stainless steel handles (A-03 enclosures and for special uses with temperatures of up to 180°C).

- 11 Unlosable insert fastening screws, with antiloosening flexible washer.

- 12 Contacts position identified with numbers or codes on both sides of each insert and laser printed or moulded.

- 13 Contacts in silver or gold-plated brass (special order) with connections to the conductors made via unlosable unloosened screws, spring terminal, crimping or incorporated 45° terminal block connectors (with screw or spring terminal).

- 14 Earth terminal protection with wide contact surface.

- 15 Pegs and levers supplied with anti-friction rings that facilitate closure and limit wear and tear.

- 16 CE marking attesting conformity to the requirements of the Low Voltage directive 73/23/EEC and its modification 93/68/EEC.

