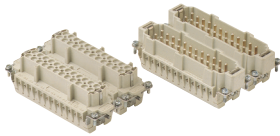


HEAVY DUTY MULTIPOLE CONNECTORS



Inserts



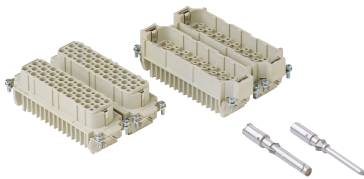
Series E 48 poles + $\frac{1}{2}$ 16A max - 600V

Part #	Screw Terminal with wire protection	OEM Part #
E24RS + E48RS	female inserts, No. (1 ÷ 24) and (25 ÷ 48)	CNEF 24 TN
E24PS + E48PS	male inserts, No. (1 ÷ 24) and (25 ÷ 48)	CNEM 24 TN

+ Both part numbers **must** be ordered separately

Part #	Cage Clamp	OEM Part #
E24RG + E48RG	female inserts, No. (1 ÷ 24) and (25 ÷ 48)	CSEF 24 N
E24PG + E48PG	male inserts, No. (1 ÷ 24) and (25 ÷ 48)	CSEM 24 N

+ Both part numbers **must** be ordered separately **Wire conductor range:** 20 ÷ 12 AWG

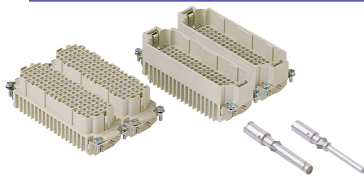


Series D 128 poles + $\frac{1}{2}$ 10A max - 600V

Part #	Crimp Terminal	OEM Part #
D64RC(x2)	female inserts, No. (1 ÷ 64)	CDF 64
D64PC(x2)	male inserts, No. (1 ÷ 64)	CDM 64

10A Crimp Contacts must be ordered separately

Wire conductor range: 22 ÷ 14 AWG

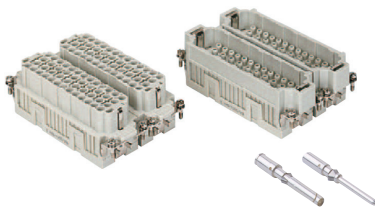


Series DD 216 poles + $\frac{1}{2}$ 10A max - 600V

Part #	Crimp Terminal	OEM Part #
DD108RC DD216RC	female inserts, No. (1 ÷ 108) and (109 ÷ 216)	CDDF 108
DD108PC DD216PC	male inserts, No. (1 ÷ 108) and (109 ÷ 216)	CDDM 108

10A Crimp Contacts must be ordered separately, see page B-28

Wire conductor range: 22 ÷ 14 AWG



Series EQ 92 poles + $\frac{1}{2}$ 16A max - 600V

Part #	Inserts, Crimp Connections
EQ46RC + EQ92RC	female inserts, No. (1 ÷ 46) and (47 ÷ 92)
EQ46PC + EQ92PC	male inserts, No. (1 ÷ 46) and (47 ÷ 92)

16A Crimp Contacts must be ordered separately, see page B-28

Wire conductor range: 20 ÷ 12 AWG

Bases



Series E 48 poles + $\frac{1}{2}$

Part #	Panel Mounting Housings	OEM Part #
EPML48SC	single lever and cover	CHI 48 LS

Pg Part #	Pg	NPT Part #	NPT	Surface Mounting Housings	OEM Part #
ES2L48SC7	36 x 1 or 2	ES2L48SC13	1-1/4" x 1 or 2	single lever and cover, double port	CHP 48 LS
ES2L48SC6	29 x 1 or 2	ES2L48SC12	1" x 1 or 2	single lever and cover, double port	CHP 48 LS29

Hoods



Series E 48 poles + $\frac{1}{2}$

Pg Part #	Pg	NPT Part #	NPT	Hoods	OEM Part #
ESEP48S7	36	ESEP48S13	1-1/4"	two pegs, side entry	CHO 48 L
ESEP48S6	29	ESEP48S12	1"	two pegs, side entry	CHO 48 L29
ESEP48S8	42	ESEP48S14	1-1/2"	two pegs, side entry	CHO 48 L42
ETEP48S7	36	ETEP48S13	1-1/4"	two pegs, top entry	CHV 48 L
ETEP48S6	29	ETEP48S12	1"	two pegs, top entry	CHV 48 L29
ETEP48S8	42	ETEP48S14	1-1/2"	two pegs, top entry	CHV 48 L42

CNE - CSE 48 poles + ⊕ 16A - 500V

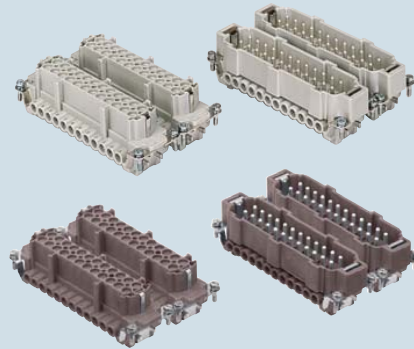


enclosures:

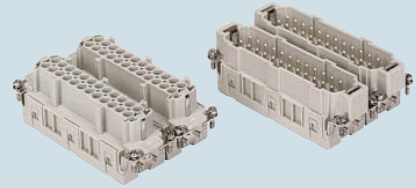
size "104.62"

- characteristics according to EN 61984:
- 16A 500V 6kV 3**
- UL, CSA, CCC, GL certified

inserts,
screw terminal connections



inserts,
spring terminal connections



description

part No.

part No.

part No.

part No.

indirect, with plate 1)
female inserts, No. (1-24) and (25-48)
male inserts, No. (1-24) and (25-48)

CNEF 24 T
CNEM 24 T

CNEF 24 TN
CNEM 24 TN

direct, without plate 2)
female inserts, No. (1-24) and (25-48)
male inserts, No. (1-24) and (25-48)

CNEF 24 TX
CNEM 24 TX

CNEF 24 TXN
CNEM 24 TXN

indirect, with plate 1), use in temperatures up to 180 °C
female inserts, No.(1-24) and (25-48), brown
male inserts, No. (1-24) and (25-48), brown

CNEF 24 RYT *
CNEM 24 RYT *

CNEF 24 RYTN *
CNEM 24 RYTN *

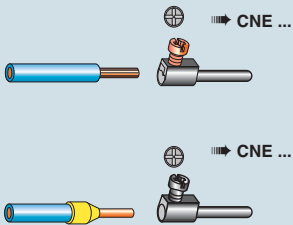
spring terminal
female inserts, No. (1-24) and (25-48)
male inserts, No. (1-24) and (25-48)

CSEF 24
CSEM 24

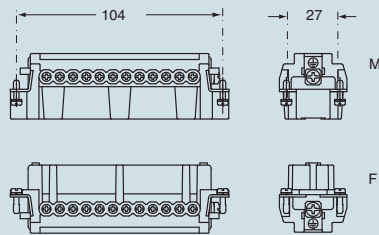
CSEF 24 N
CSEM 24 N

- 1) for non-prepared conductors
- 2) for bush terminal conductors

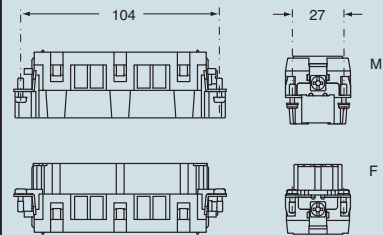
* CNE...RY version without plastic wire insertion guide cover available on request.



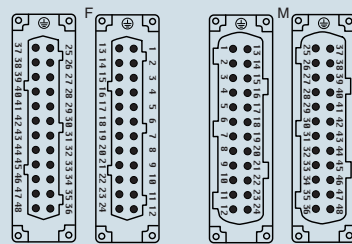
dimensions in mm



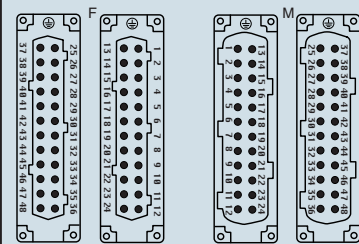
dimensions in mm



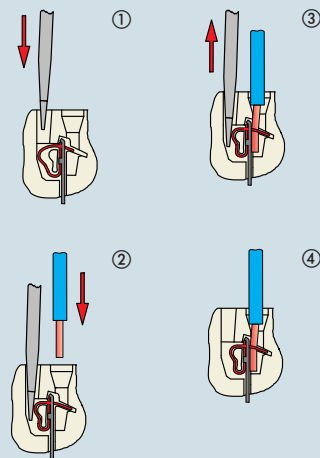
contacts side (front view)



contacts side (front view)



connection with spring terminal



- inserts with plate, for section conductors:
0.5 - 2.5 mm² - AWG 20 - 14
- inserts without plate, for section conductors:
0.25 - 2.5 mm² - AWG 24 - 14

- inserts for section conductors:
0.14 - 2.5 mm² - AWG 26 - 14

dimensions shown are not binding
and may be changed without notice

GENERAL FEATURES OF MULTIPOLE CONNECTORS FOR INDUSTRIAL PURPOSES

- 1 Threaded cable passage in various Pg diameters, metric diameters in accordance with EN 60423 and "NPT" diameters, for cable entry devices in accordance with EN 50262, may be located vertically, horizontally or frontally.
- 2 Heavy duty enclosures in die-cast aluminium alloy or self-extinguishing thermoplastic (A-03 series).
Wall mounting or bulkhead housings and hoods are available, with or without fixed covers or with mobile protection covers.
- 3 Metallic enclosures with a coated finish of epoxy-polyester with high resistance to mechanical stress and external agents. Enclosures used with temperatures of up to 180°C and in aggressive environments

are treated with special coatings. Where electromagnetic compatibility is necessary: EMC enclosures with high conductivity and high corrosion resistance surface treatment.

- 4 Inserts in self-extinguishing thermoplastic material reinforced with glass fibres, UL approved, with a limit working temperature from -40°C to +125°C. For some series, inserts in PPS (polyphenylene sulphide) may be requested for special uses with temperatures of up to 180°C.
- 5 Polarized inserts with asymmetric guide rails for preventing incorrect coupling. The inserts have a mechanical duration equal to or over 500 coupling cycles.

- 6 Inserts manufactured in conformity with the DIN VDE 0627 standard and are certified and identified with the UL and CSA marks.
- 7 Special seal gaskets in vinyl nitrile elastomer or fluoro elastomer (on enclosures for use with maximum temperatures of 180°C and for aggressive environments), in antiaging, oil-resistant, fuel-resistant, together with the cable entry devices (not supplied) provide an IP66 degree of protection for coupled connectors.
Special conductive seals for EMC enclosures.
- 8 Stainless steel closure levers and springs guarantee a perfect closure and sealing.
- 9 Locking device available in two versions, simple (with one lever), or double (with two levers).

- 10 Various types of handles are available: in self-extinguishing, thermoplastic material reinforced with glass fibres; in die-cast aluminium (for special use with temperatures of up to 180°C); monoblock stainless steel handles (A-03 enclosures and for special uses with temperatures of up to 180°C).
- 11 Unlosable insert fastening screws, with antiloosening flexible washer.
- 12 Contacts position identified with numbers or codes on both sides of each insert and laser printed or moulded.
- 13 Contacts in silver or gold-plated brass (special order) with connections to the conductors made via unlosable unloosened screws, spring terminal, crimping or incorporated 45° terminal block connectors (with screw or spring terminal).
- 14 Earth terminal protection with wide contact surface.
- 15 Pegs and levers supplied with anti-friction rings that facilitate closure and limit wear and tear.
- 16 CE marking attesting conformity to the requirements of the Low Voltage directive 73/23/EEC and its modification 93/68/EEC.

