

MULTIPOLE CONNECTORS COMPLETE KITS V-TYPE LOCKING ENCLOSURES



E series complete connectors



Complete Kits **16A max-600V (screw) V-type lever version**

Part #	Panel mount housings single lever, E series inserts, side entry hood	OEM Part #
E06SEPM25S	6P S.E. Panel SGL M25	MNLZ 06 IO
E10SEPM25S	10P S.E. Panel SGL M25	MNLZ 10 IO
E16SEPM32S	16P S.E. Panel SGL M32	MNLZ 16 IO
E24SEPM32S	24P S.E. Panel SGL M32	MNLZ 24 IO

Part consisting of: panel mount base + female insert + male insert + hood



Complete Kits **16A max-600V (screw) V-type lever version**

Part #	Panel mount housings single lever, E series inserts, top entry hood	OEM Part #
E06TEPM25S	6P T.E. Panel SGL M25	MNLZ 06 IV
E10TEPM25S	10P T.E. Panel SGL M25	MNLZ 10 IV
E16TEPM32S	16P T.E. Panel SGL M32	MNLZ 16 IV
E24TEPM32S	24P T.E. Panel SGL M32	MNLZ 24 IV

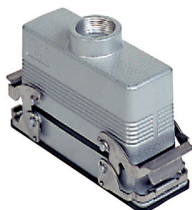
Part consisting of: panel mount base + female insert + male insert + hood



Complete Kits **16A max-600V (screw) V-type lever version**

Part #	Panel mount housings two levers, E series inserts, side entry hood	OEM Part #
E10SEPM25D	10P S.E. Panel DBL M25	MNZ 10 IO
E16SEPM32D	16P S.E. Panel DBL M32	MNZ 16 IO
E24SEPM32D	24P S.E. Panel DBL M32	MNZ 24 IO

Part consisting of: panel mount base + female insert + male insert + hood



Complete Kits **16A max-600V (screw) V-type lever version**

Part #	Panel mount housings two levers, E series inserts, top entry hood	OEM Part #
E10TEPM25D	10P T.E. Panel DBL M25	MNZ 10 IV
E16TEPM32D	16P T.E. Panel DBL M32	MNZ 16 IV
E24TEPM32D	24P T.E. Panel DBL M32	MNZ 24 IV

Part consisting of: panel mount base + female insert + male insert + hood



Complete Kits **16A max-600V (screw) V-type lever version**

Part #	Surface mount housings single lever, E series inserts, side entry hood	OEM Part #
E06SESM25S	6P S.E. Surface SGL M25 / M20	MNLZ 06 PO

Part consisting of: surface mount base + female insert + male insert + hood



Complete Kits **16A max-600V (screw) V-type lever version**

Part #	Surface mount housings single lever, E series inserts, top entry hood
E06TESM25S	6P T.E. Surface SGL M25 / M20

Part consisting of: surface mount base + female insert + male insert + hood

• All entry ports are Metric thread

CNZ complete connectors 16A max - 500V/6kV/3 (screw) V-type lever version



part consisting of*:

- CNLZ IO
- CVI L + CNEF T + CNEM T + CHO L
- MNLZ IO
- CVI L + CNEF T + CNEM T + MHO L
- CNLZ IV
- CVI L + CNEF T + CNEM T + CHV L
- MNLZ IV
- CVI L + CNEF T + CNEM T + MHV L

*(housing + female insert + male insert + hood)

bulkhead mounting housings with single lever, CNE series inserts, hood side entry

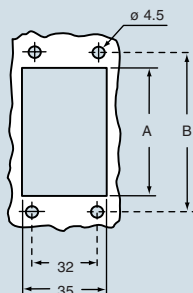


bulkhead mounting housings with single lever, CNE series inserts, hood top entry



description	part No.	entry Pg	part No.	entry M	part No.	entry Pg	part No.	entry M
with lever, 6 poles + ⊕, size "44.27"	CNLZ 06 IO	16	MNLZ 06 IO	25	CNLZ 06 IV	16	MNLZ 06 IV	25
with lever, 10 poles + ⊕, size "57.27"	CNLZ 10 IO	16	MNLZ 10 IO	25	CNLZ 10 IV	16	MNLZ 10 IV	25
with lever, 16 poles + ⊕, size "77.27"	CNLZ 16 IO	21	MNLZ 16 IO	32	CNLZ 16 IV	21	MNLZ 16 IV	32
with lever, 24 poles + ⊕, size "104.27"	CNLZ 24 IO	21	MNLZ 24 IO	32	CNLZ 24 IV	21	MNLZ 24 IV	32

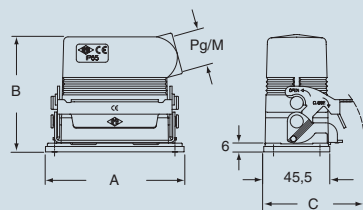
panel cut-out for bulkhead mounting housings in mm



type	A	B
CNLZ/MNLZ 06 I	52	70
CNLZ/MNLZ 10 I	65	83
CNLZ/MNLZ 16 I	86	103
CNLZ/MNLZ 24 I	112	130

dimensions in mm

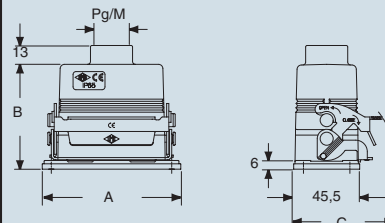
CNLZ/MNLZ IO



type	A	B	C
CNLZ/MNLZ 06 IO	82,5	74	66
CNLZ/MNLZ 10 IO	95,5	79	70
CNLZ/MNLZ 16 IO	115,5	90	70
CNLZ/MNLZ 24 IO	142,5	90	70

dimensions in mm

CNLZ/MNLZ IV



type	A	B	C
CNLZ/MNLZ 06 IV	82,5	67	66
CNLZ/MNLZ 10 IV	95,5	72	70
CNLZ/MNLZ 16 IV	115,5	72	70
CNLZ/MNLZ 24 IV	142,5	82	70

the indicated measurements are only approximate and can be changed without prior notice