

# MULTIPOLE CONNECTORS COMPLETE KITS V-TYPE LOCKING ENCLOSURES



## E series complete connectors



### Complete Kits **16A max-600V (screw) V-type lever version**

Part #	Panel mount housings single lever, E series inserts, side entry hood	OEM Part #
<b>E06SEPM25S</b>	6P S.E. Panel SGL M25	<b>MNLZ 06 IO</b>
<b>E10SEPM25S</b>	10P S.E. Panel SGL M25	<b>MNLZ 10 IO</b>
<b>E16SEPM32S</b>	16P S.E. Panel SGL M32	<b>MNLZ 16 IO</b>
<b>E24SEPM32S</b>	24P S.E. Panel SGL M32	<b>MNLZ 24 IO</b>

Part consisting of: panel mount base + female insert + male insert + hood



### Complete Kits **16A max-600V (screw) V-type lever version**

Part #	Panel mount housings single lever, E series inserts, top entry hood	OEM Part #
<b>E06TEPM25S</b>	<b>6P T.E. Panel SGL M25</b>	<b>MNLZ 06 IV</b>
<b>E10TEPM25S</b>	10P T.E. Panel SGL M25	<b>MNLZ 10 IV</b>
<b>E16TEPM32S</b>	16P T.E. Panel SGL M32	<b>MNLZ 16 IV</b>
<b>E24TEPM32S</b>	24P T.E. Panel SGL M32	<b>MNLZ 24 IV</b>

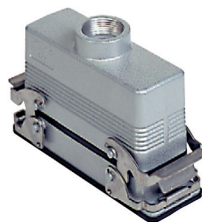
Part consisting of: panel mount base + female insert + male insert + hood



### Complete Kits **16A max-600V (screw) V-type lever version**

Part #	Panel mount housings two levers, E series inserts, side entry hood	OEM Part #
<b>E10SEPM25D</b>	10P S.E. Panel DBL M25	<b>MNZ 10 IO</b>
<b>E16SEPM32D</b>	16P S.E. Panel DBL M32	<b>MNZ 16 IO</b>
<b>E24SEPM32D</b>	24P S.E. Panel DBL M32	<b>MNZ 24 IO</b>

Part consisting of: panel mount base + female insert + male insert + hood



### Complete Kits **16A max-600V (screw) V-type lever version**

Part #	Panel mount housings two levers, E series inserts, top entry hood	OEM Part #
<b>E10TEPM25D</b>	10P T.E. Panel DBL M25	<b>MNV 10 IV</b>
<b>E16TEPM32D</b>	16P T.E. Panel DBL M32	<b>MNZ 16 IV</b>
<b>E24TEPM32D</b>	24P T.E. Panel DBL M32	<b>MNZ 24 IV</b>

Part consisting of: panel mount base + female insert + male insert + hood



### Complete Kits **16A max-600V (screw) V-type lever version**

Part #	Surface mount housings single lever, E series inserts, side entry hood	OEM Part #
<b>E06SESM25S</b>	6P S.E. Surface SGL M25 / M20	<b>MNLZ 06 PO</b>

Part consisting of: surface mount base + female insert + male insert + hood



### Complete Kits **16A max-600V (screw) V-type lever version**

Part #	Surface mount housings single lever, E series inserts, top entry hood
<b>E06TESM25S</b>	6P T.E. Surface SGL M25 / M20

Part consisting of: surface mount base + female insert + male insert + hood

• All entry ports are Metric thread

CNZ complete connectors 16A max - 500V/6kV/3 (screw) V-type lever version



part consisting of\*:

- CNLZ IO
- CVI L + CNEF T + CNEM T + CHO L
- MNLZ IO
- CVI L + CNEF T + CNEM T + MHO L
- CNLZ IV
- CVI L + CNEF T + CNEM T + CHV L
- MNLZ IV
- CVI L + CNEF T + CNEM T + MHV L

\*(housing + female insert + male insert + hood)

bulkhead mounting housings with single lever, CNE series inserts, hood side entry

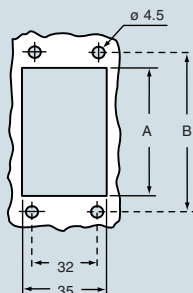


bulkhead mounting housings with single lever, CNE series inserts, hood top entry



description	part No.		part No.		part No.		part No.	
		entry Pg		entry M		entry Pg		entry M
with lever, 6 poles + ⊕, size "44.27"	CNLZ 06 IO	16	MNLZ 06 IO	25	CNLZ 06 IV	16	MNLZ 06 IV	25
with lever, 10 poles + ⊕, size "57.27"	CNLZ 10 IO	16	MNLZ 10 IO	25	CNLZ 10 IV	16	MNLZ 10 IV	25
with lever, 16 poles + ⊕, size "77.27"	CNLZ 16 IO	21	MNLZ 16 IO	32	CNLZ 16 IV	21	MNLZ 16 IV	32
with lever, 24 poles + ⊕, size "104.27"	CNLZ 24 IO	21	MNLZ 24 IO	32	CNLZ 24 IV	21	MNLZ 24 IV	32

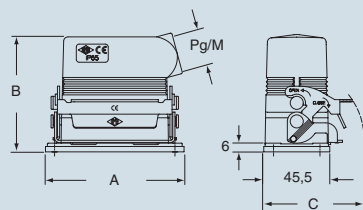
panel cut-out for bulkhead mounting housings in mm



type	A	B
CNLZ/MNLZ 06 I	52	70
CNLZ/MNLZ 10 I	65	83
CNLZ/MNLZ 16 I	86	103
CNLZ/MNLZ 24 I	112	130

dimensions in mm

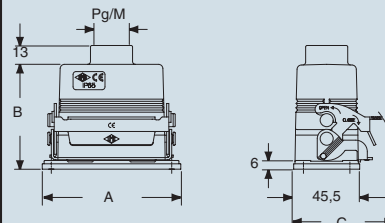
CNLZ/MNLZ IO



type	A	B	C
CNLZ/MNLZ 06 IO	82,5	74	66
CNLZ/MNLZ 10 IO	95,5	79	70
CNLZ/MNLZ 16 IO	115,5	90	70
CNLZ/MNLZ 24 IO	142,5	90	70

dimensions in mm

CNLZ/MNLZ IV



type	A	B	C
CNLZ/MNLZ 06 IV	82,5	67	66
CNLZ/MNLZ 10 IV	95,5	72	70
CNLZ/MNLZ 16 IV	115,5	72	70
CNLZ/MNLZ 24 IV	142,5	82	70

the indicated measurements are only approximate and can be changed without prior notice