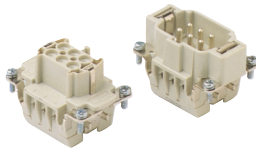


# HEAVY DUTY MULTIPOLE CONNECTORS



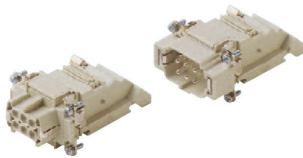
## Inserts



### Series E 6 poles + $\frac{1}{2}$ 16A max - 600V

| Part #       | Cage Clamp                          | OEM Part #       |
|--------------|-------------------------------------|------------------|
| E06RG        | female inserts                      | CSEF 06          |
| E06PG        | male inserts                        | CSEM 06          |
| Part #       | Screw Terminal with wire protection | OEM Part #       |
| <b>E06RS</b> | <b>female inserts</b>               | <b>CNEF 06 T</b> |
| E06PS        | male inserts                        | CNEM 06 T        |

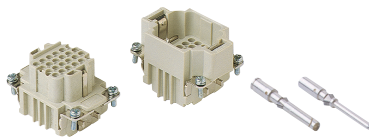
Wire conductor range: 22 ÷ 12 AWG



### Series E-TB 6 poles + $\frac{1}{2}$ 16A max - 600V

| Part #    | Terminal Block Inserts Screw Terminal Connection     |
|-----------|--|
| E06RS-TBL | female inserts with female contacts (left mounting)  |
| E06RS-TBR | female inserts with female contacts (right mounting) |
| E06PS-TBL | male inserts with male contacts (left mounting)      |
| E06PS-TBR | male inserts with male contacts (right mounting)     |

Wire conductor range: 18 ÷ 14 AWG

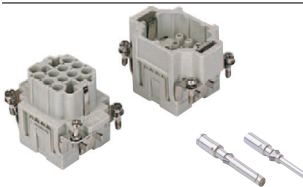


### Series DD 24 poles + $\frac{1}{2}$ 10A max - 600V

| Part # | Crimp Terminal | OEM Part # |
|--------|----------------|------------|
| DD24RC | female inserts | CDDF 24    |
| DD24PC | male inserts   | CDDM 24    |

Wire conductor range: 22 ÷ 14 AWG

10A Crimp Contacts must be ordered separately



### Series EQ 10 poles + $\frac{1}{2}$ 16A max - 600V

| Part # | Inserts, Crimp Connections         |
|--------|------------------------------------|
| EQ10RC | female inserts for female contacts |
| EQ10PC | male inserts for male contacts     |

Wire conductor range: 20 ÷ 12 AWG

16A Crimp Contacts must be ordered separately, see page B-28

## Bases



### Series E 6 poles + $\frac{1}{2}$

| Part #   | Panel Mounting Housings | OEM Part # |
|----------|-------------------------|------------|
| EPML06S  | single lever            | CHI 06 L   |
| EPML06SC | single lever with cover | CHI 06 LCS |
| EPMP06SC | two pegs with cover     | CHI 06 LCS |

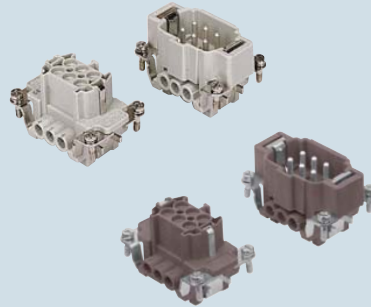
| Pg Part # | Pg     | NPT Part # | NPT      | Surface Mounting Housings                              | OEM Part #    |
|-----------|--------|------------|----------|--|---------------|
| ES1L06S4  | 16     | ES1L06S10  | 1/2"     | single lever, single port                              | CHP 06 L      |
| ES2L06S4  | 16 x 2 | ES2L06S10  | 1/2" x 2 | single lever, double port                              | CHP 06 L 2    |
| ES1L06S5  | 21     | ES1L06S11  | 3/4"     | single lever, single port, high construction           | CAP 06 L      |
| ES2L06S5  | 21 x 2 | ES2L06S11  | 3/4" x 2 | single lever, double port, high construction           | CAP 06 L 2    |
| ES1L06S6  | 29     | ES1L06S12  | 1"       | single lever, single port, high construction           | CAP 06 L 29   |
| ES2L06S6  | 29 x 2 | ES2L06S12  | 1" x 2   | single lever, double port, high construction           | CAP 06 L 229  |
| ES1L06SC4 | 16     | ES1L06SC10 | 1/2"     | single lever and cover, single port                    | CHP 06 LS     |
| ES2L06SC4 | 16 x 2 | ES2L06SC10 | 1/2" x 2 | single lever and cover, double port                    | CHP 06 LS2    |
| ES1L06SC5 | 21     | ES1L06SC11 | 3/4"     | single lever and cover, single port, high construction | CAP 06 LS     |
| ES2L06SC5 | 21 x 2 | ES2L06SC11 | 3/4" x 2 | single lever and cover, double port, high construction | CAP 06 LS 2   |
| ES1L06SC6 | 29     | ES1L06SC12 | 1"       | single lever and cover, single port, high construction | CAP 06 LS 29  |
| ES2L06SC6 | 29 x 2 | ES2L06SC12 | 1" x 2   | single lever and cover, double port, high construction | CAP 06 LS 229 |

**CNE - CSE 6 poles + ⊕ 16A - 500V**



- characteristics according to EN 61984:  
**16A 500V 6kV 3**  
 - UL, CSA, CCC, GL certified

inserts,  
 screw terminal connections



inserts,  
 spring terminal connections



description

part No.

part No.

indirect, with plate 1)  
 female inserts with female contacts  
 male inserts with male contacts

**CNEF 06 T**  
**CNEM 06 T**

direct, without plate 2)  
 female inserts with female contacts  
 male inserts with male contacts

**CNEF 06 TX**  
**CNEM 06 TX**

indirect, with plate 1), use in up to 180 °C  
 female inserts with female contacts, brown  
 male inserts with male contacts, brown

**CNEF 06 RYT \***  
**CNEM 06 RYT \***

spring terminal  
 female inserts with female contacts  
 male inserts with male contacts

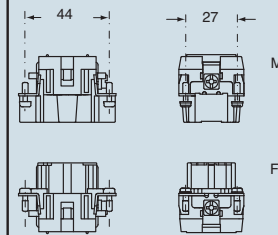
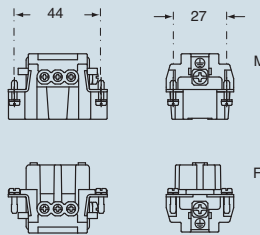
**CSEF 06**  
**CSEM 06**

1) for non-prepared conductors  
 2) for bush terminal conductors

dimensions in mm

dimensions in mm

\* CNE...RY version without plastic wire insertion  
 guide cover available on request.



⇒ CNE ...

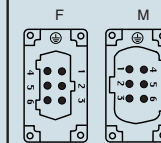
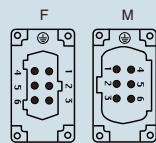


⇒ CNE ... X

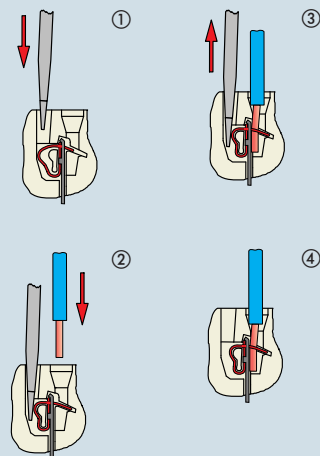


contacts side (front view)

contacts side (front view)



connection with spring terminal



- inserts with plate, for section conductors:  
 0.5 - 2.5 mm<sup>2</sup> - AWG 20 - 14  
 - inserts without plate, for section conductors:  
 0.25 - 2.5 mm<sup>2</sup> - AWG 24 - 14

- inserts for section conductors:  
 0.14 - 2.5 mm<sup>2</sup> - AWG 26 - 14

dimensions shown are not binding  
 and may be changed without notice

# HEAVY DUTY MULTIPOLE CONNECTORS



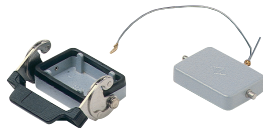
## Hoods



Series E **6 poles +** ⚡

| Pg Part # | Pg   | NPT Part # | NPT  | Hoods   | OEM Part #   |
|-----------|------|------------|------|---|--------------|
| ESEP06S3  | 13.5 | ESEP06S10  | 1/2" | two pegs, side entry                                      | CHO 06 L 13  |
| ESEP06S4  | 16   | ESEP06S10  | 1/2" | two pegs, side entry                                      | CHO 06 L 16  |
| ESTP06S5  | 21   | ESTP06S11  | 3/4" | two pegs, side entry, high construction                   | CAO 06 L 21  |
| ESTP06S6  | 29   | ESTP06S12  | 1"   | two pegs, side entry, high construction                   | CAO 06 L 29  |
| ETEP06S3  | 13.5 | ETEP06S10  | 1/2" | two pegs, top entry                                       | CHV 06 L 13  |
| ETEP06S4  | 16   | ETEP06S10  | 1/2" | two pegs, top entry                                       | CHV 06 L 16  |
| ETTP06S5  | 21   | ETTP06S11  | 3/4" | two pegs, top entry, high construction                    | CAV 06 L 21  |
| ETTP06S6  | 29   | ETTP06S12  | 1"   | two pegs, top entry, high construction                    | CAV 06 L 29  |
| ESEL06S4* | 16   | ESEL06S10* | 1/2" | single lever, side entry                                  | CHO 06 LX 16 |
| ETEL06S4* | 16   | ETEL06S10* | 1/2" | single lever, top entry                                   | CHV 06 LX 16 |
| ECC06S4   | 16   | ECC06S10   | 1/2" | single lever, top entry, cable coupler                    | CHV 06 LG    |
| ECC06S5   | 21   | ECC06S11   | 3/4" | single lever, top entry, cable coupler, high construction | CAV 06 LG 21 |
| ECC06S6   | 29   | ECC06S12   | 1"   | single lever, top entry, cable coupler, high construction | CAV 06 LG 29 |

## Covers



Series E **6 poles +** ⚡

| Part # | Covers  | OEM Part # |
|--------|---|------------|
| EP06SL | two pegs for (for housings with single lever) | CHC 06 L   |
| EL06SL | single lever (for hoods with two pegs)        | CHC 06 LG  |

\* only for EPMP06SC housings

## USE RDC OR BRC CONNECTORS



# GENERAL FEATURES OF MULTIPOLE CONNECTORS FOR INDUSTRIAL PURPOSES

- 1 Threaded cable passage in various Pg diameters, metric diameters in accordance with EN 60423 and "NPT" diameters, for cable entry devices in accordance with EN 50262, may be located vertically, horizontally or frontally.
- 2 Heavy duty enclosures in die-cast aluminium alloy or self-extinguishing thermoplastic (A-03 series).  
Wall mounting or bulkhead housings and hoods are available, with or without fixed covers or with mobile protection covers.
- 3 Metallic enclosures with a coated finish of epoxy-polyester with high resistance to mechanical stress and external agents. Enclosures used with temperatures of up to 180°C and in aggressive environments

are treated with special coatings. Where electromagnetic compatibility is necessary: EMC enclosures with high conductivity and high corrosion resistance surface treatment.

- 4 Inserts in self-extinguishing thermoplastic material reinforced with glass fibres, UL approved, with a limit working temperature from -40°C to +125°C. For some series, inserts in PPS (polyphenylene sulphide) may be requested for special uses with temperatures of up to 180°C.
- 5 Polarized inserts with asymmetric guide rails for preventing incorrect coupling. The inserts have a mechanical duration equal to or over 500 coupling cycles.

- 6 Inserts manufactured in conformity with the DIN VDE 0627 standard and are certified and identified with the UL and CSA marks.

- 7 Special seal gaskets in vinyl nitrile elastomer or fluoro elastomer (on enclosures for use with maximum temperatures of 180°C and for aggressive environments), in antiaging, oil-resistant, fuel-resistant, together with the cable entry devices (not supplied) provide an IP66 degree of protection for coupled connectors.

Special conductive seals for EMC enclosures.

- 8 Stainless steel closure levers and springs guarantee a perfect closure and sealing.

- 9 Locking device available in two versions, simple (with one lever), or double (with two levers).

- 10 Various types of handles are available: in self-extinguishing, thermoplastic material reinforced with glass fibres; in die-cast aluminium (for special use with temperatures of up to 180°C); monoblock stainless steel handles (A-03 enclosures and for special uses with temperatures of up to 180°C).

- 11 Unlosable insert fastening screws, with antiloosening flexible washer.

- 12 Contacts position identified with numbers or codes on both sides of each insert and laser printed or moulded.

- 13 Contacts in silver or gold-plated brass (special order) with connections to the conductors made via unlosable unloosened screws, spring terminal, crimping or incorporated 45° terminal block connectors (with screw or spring terminal).

- 14 Earth terminal protection with wide contact surface.

- 15 Pegs and levers supplied with anti-friction rings that facilitate closure and limit wear and tear.

- 16 CE marking attesting conformity to the requirements of the Low Voltage directive 73/23/EEC and its modification 93/68/EEC.

