

HEAVY DUTY MULTIPOLE CONNECTORS



Inserts

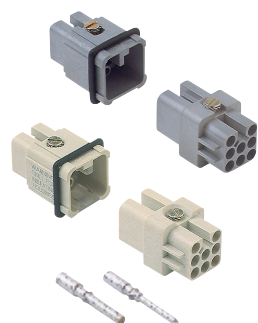


Series A **3 or 4 poles + $\frac{1}{2}$ 10A max - 600V**

| Part # | Screw Terminal | OEM Part # |
|--------|----------------------------------|------------|
| A03RS | female inserts, white (or black) | CKF 03 |
| A03PS | male inserts, white (or black) | CKM 03 |
| A04RS | female inserts, white (or black) | CKF 04 |
| A04PS | male inserts, white (or black) | CKM 04 |

Wire conductor range: 18 ÷ 14 AWG

Note: black are non-stock items



Series D **7 poles + $\frac{1}{2}$ 10A max - 600V***
8 poles 10A max - 50V

| Part # | Crimp Terminal | OEM Part # |
|--------|---------------------------------|------------|
| D07RC* | female inserts, grey (or black) | CDF 07 |
| D07PC* | male inserts, grey (or black) | CDM 07 |
| D08RC | female inserts, white | CDF 08 |
| D08PC | male inserts, white | CDM 08 |

10A Crimp Contacts must be ordered separately

Note: black are non-stock items

* To be used with plastic hoods and bases only.

Wire conductor range: 22 ÷ 14 AWG



Series E **5 poles + $\frac{1}{2}$ 16A max - 600V**
(230V / 400V / 4kV / Pollution degree 3)

| Part # | Crimp Terminal | OEM Part # |
|--------|----------------|------------|
| E05RC | female inserts | CQF 05 |
| E05PC | male inserts | CQM 05 |

16A Crimp Contacts must be ordered separately

Wire conductor range: 22 ÷ 12 AWG

USE RDC OR BRC CONNECTORS



CD 8 poles 10A - 50V



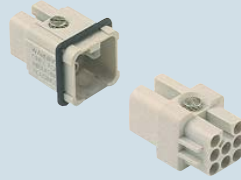
enclosures

size "21.21"

inserts, crimp connections

**10A crimp contacts
silver and gold plated**

- characteristics according to EN 61984:
10A 50V 0,8kV 3
- UL, CSA, CCC, GL certified
- for contact crimping instructions, please see the crimping tool section (10A contacts, CDF and CDM series) on pages 296, 300, 304, 306, 308
- coding pin with loss of a contact CR CP



description

part No.

part No.

part No.

without contacts (to be ordered separately)
female inserts for female contacts ¹⁾
male inserts for male contacts

CDF 08
CDM 08

| 10A female contacts | | |
|---------------------------|-----------|----------------------|
| 0.14-0.37 mm ² | AWG 26-22 | identification No. 1 |
| 0.5 mm ² | AWG 20 | identification No. 2 |
| 0.75 mm ² | AWG 18 | identification No. ② |
| 1 mm ² | AWG 18 | identification No. 3 |
| 1.5 mm ² | AWG 16 | identification No. 4 |
| 2.5 mm ² | AWG 14 | identification No. 5 |

| silver plated | | gold plated | |
|-----------------|--|-----------------|--|
| CDFA 0.3 | | CDFD 0.3 | |
| CDFA 0.5 | | CDFD 0.5 | |
| CDFA 0.7 | | CDFD 0.7 | |
| CDFA 1.0 | | CDFD 1.0 | |
| CDFA 1.5 | | CDFD 1.5 | |
| CDFA 2.5 | | CDFD 2.5 | |

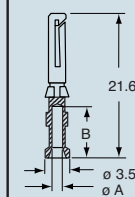
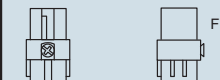
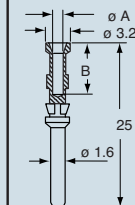
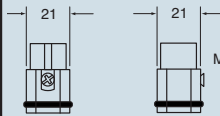
| 10A male contacts | | |
|---------------------------|-----------|----------------------|
| 0.14-0.37 mm ² | AWG 26-22 | identification No. 1 |
| 0.5 mm ² | AWG 20 | identification No. 2 |
| 0.75 mm ² | AWG 18 | identification No. ② |
| 1 mm ² | AWG 18 | identification No. 3 |
| 1.5 mm ² | AWG 16 | identification No. 4 |
| 2.5 mm ² | AWG 14 | identification No. 5 |

| silver plated | | gold plated | |
|-----------------|--|-----------------|--|
| CDMA 0.3 | | CDMD 0.3 | |
| CDMA 0.5 | | CDMD 0.5 | |
| CDMA 0.7 | | CDMD 0.7 | |
| CDMA 1.0 | | CDMD 1.0 | |
| CDMA 1.5 | | CDMD 1.5 | |
| CDMA 2.5 | | CDMD 2.5 | |

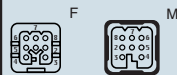
¹⁾ the female inserts can be mounted into the straight bulkhead housings CK I from the rear

dimensions in mm

dimensions in mm



contacts side (front view)



N.B.:
plug inserts with new, square shaped seal for IP44 and IP66/IP67 protection rating

CDF and CDM contacts

| conductor section mm ² | conductor slot | |
|-----------------------------------|----------------|--------|
| | ø A (mm) | B (mm) |
| 0.14-0.37 | 0.9 | 8 |
| 0.5 | 1.1 | 8 |
| 0.75 | 1.3 | 8 |
| 1.0 | 1.45 | 8 |
| 1.5 | 1.8 | 8 |
| 2.5 | 2.2 | 6 |

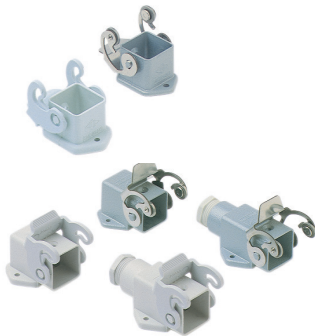
- stripping length see section feature of inserts

dimensions shown are not binding and may be changed without notice



HEAVY DUTY MULTIPOLE CONNECTORS

Bases



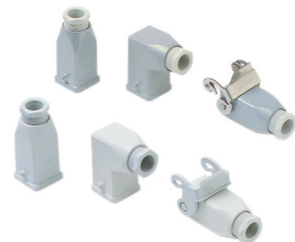
Series A **3 or 4 poles + $\frac{1}{2}$**

| Part # | Crimp Terminal | OEM Part # |
|----------|---------------------------------------|------------|
| APML03SP | single lever, insulating type (white) | CK 03 I |
| APML03S | single lever, metal type (grey) | CKAS 03 I |

| Pg Part # | Pg | NPT Part # | NPT | Angled Panel Mounting Bases | OEM Part # |
|------------|----|------------|------|--|------------|
| APML03SAP | | | | single lever, insulating type (white) | CK 03 IA |
| APML03SA | | | | single lever, metal type (grey) | CKAS 03 IA |
| AS1L03SA2P | 11 | AS1L03SA9P | 3/8" | single lever, single port, insulating type (white) | CK 03 IAP |
| AS1L03SA2 | 11 | AS1L03SA9 | 3/8" | single lever, single port, metal type (grey) | CKAS 03 IA |

Cable glands not included.

Hoods



Series A **3 or 4 poles + $\frac{1}{2}$**

| Pg Part # | Pg | NPT Part # | NPT | Hoods | OEM Part # |
|------------|----|------------|------|--|------------|
| ATEP03S2P | 11 | ATEP03S9P | 3/8" | two pegs, top entry, insulating type (white) | CK 03 V |
| ATEP03S2 | 11 | ATEP03S9 | 3/8" | two pegs, top entry, metal type (grey) | CKA 03 V |
| ATEP03SA2P | 11 | ATEP03SA9P | 3/8" | two pegs, top entry, angled, insulating type (white) | CK 03 VA |
| ATEP03SA2 | 11 | ATEP03SA9 | 3/8" | two pegs, top entry, angled, metal type (grey) | CKA 03 VA |
| ACC03S2P | 11 | ACC03S9P | 3/8" | single lever, cable coupler, insulating type (white) | CK 03 VG |
| ACC03S2 | 11 | ACC03S9 | 3/8" | single lever, cable coupler, metal type (grey) | CKAS 03 VG |

Cable glands not included.

Covers



Series A **3 or 4 poles + $\frac{1}{2}$**

| Part # | Covers | OEM Part # |
|----------|--|-------------|
| AP03SLP | two pegs, insulating type (white) (female inserts) | CK 03 C |
| AP03SLP1 | two pegs, insulating type (white) (male inserts) | |
| AP03SL | two pegs, metal type (grey) (female inserts) | CKA 03 C |
| AP03SL1 | two pegs, metal type (grey) (male inserts) | |
| AL03SLP | single lever, insulating type (white) (male inserts) | CK 03 CXA |
| AL03SLP1 | single lever, gasket, insulating type (white) (female inserts) | |
| AL03SL | single lever, metal type (grey) (male inserts) | CKAX 03 CXA |
| AL03SL1 | single lever, gasket, metal type (grey) (female inserts) | |

GENERAL FEATURES OF MULTIPOLE CONNECTORS FOR INDUSTRIAL PURPOSES

- 1 Threaded cable passage in various Pg diameters, metric diameters in accordance with EN 60423 and "NPT" diameters, for cable entry devices in accordance with EN 50262, may be located vertically, horizontally or frontally.
- 2 Heavy duty enclosures in die-cast aluminium alloy or self-extinguishing thermoplastic (A-03 series).
Wall mounting or bulkhead housings and hoods are available, with or without fixed covers or with mobile protection covers.
- 3 Metallic enclosures with a coated finish of epoxy-polyester with high resistance to mechanical stress and external agents. Enclosures used with temperatures of up to 180°C and in aggressive environments

are treated with special coatings. Where electromagnetic compatibility is necessary: EMC enclosures with high conductivity and high corrosion resistance surface treatment.

- 4 Inserts in self-extinguishing thermoplastic material reinforced with glass fibres, UL approved, with a limit working temperature from -40°C to +125°C. For some series, inserts in PPS (polyphenylene sulphide) may be requested for special uses with temperatures of up to 180°C.
- 5 Polarized inserts with asymmetric guide rails for preventing incorrect coupling. The inserts have a mechanical duration equal to or over 500 coupling cycles.

- 6 Inserts manufactured in conformity with the DIN VDE 0627 standard and are certified and identified with the UL and CSA marks.

- 7 Special seal gaskets in vinyl nitrile elastomer or fluoro elastomer (on enclosures for use with maximum temperatures of 180°C and for aggressive environments), in antiaging, oil-resistant, fuel-resistant, together with the cable entry devices (not supplied) provide an IP66 degree of protection for coupled connectors.

Special conductive seals for EMC enclosures.

- 8 Stainless steel closure levers and springs guarantee a perfect closure and sealing.

- 9 Locking device available in two versions, simple (with one lever), or double (with two levers).

- 10 Various types of handles are available: in self-extinguishing, thermoplastic material reinforced with glass fibres; in die-cast aluminium (for special use with temperatures of up to 180°C); monoblock stainless steel handles (A-03 enclosures and for special uses with temperatures of up to 180°C).

- 11 Unlosable insert fastening screws, with antiloosening flexible washer.

- 12 Contacts position identified with numbers or codes on both sides of each insert and laser printed or moulded.

- 13 Contacts in silver or gold-plated brass (special order) with connections to the conductors made via unlosable unloosened screws, spring terminal, crimping or incorporated 45° terminal block connectors (with screw or spring terminal).

- 14 Earth terminal protection with wide contact surface.

- 15 Pegs and levers supplied with anti-friction rings that facilitate closure and limit wear and tear.

- 16 CE marking attesting conformity to the requirements of the Low Voltage directive 73/23/EEC and its modification 93/68/EEC.

