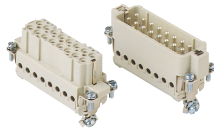




# HEAVY DUTY MULTIPOLE CONNECTORS

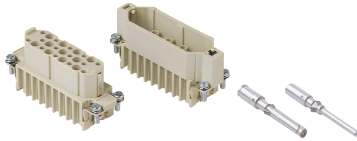
## Inserts



Series A **16 poles +  $\frac{1}{2}$  16A max - 600V**

Part #	Screw Terminal	OEM Part #
A16RS	female inserts	CDAF 16
A16PS	male inserts	CDAM 16

Wire conductor range: 18 ÷ 12 AWG



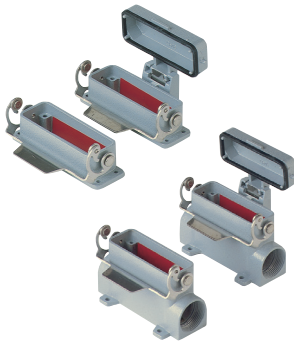
Series D **25 poles +  $\frac{1}{2}$  10A max - 600V**

Part #	Crimp Terminal	OEM Part #
D25RC	female inserts	CDF 25
D25PC	male inserts	CDM 25

Wire conductor range: 22 ÷ 14 AWG

10A Crimp Contacts must be ordered separately

## Bases

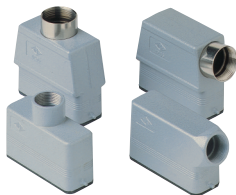


Series A **16 poles +  $\frac{1}{2}$**

Part #	Panel Mounting Housings	OEM Part #
APML16S	single lever	CZI 25 L
APML16SC	single lever and cover	CZI 25 LS

Pg Part #	Pg	NPT Part #	NPT	Surface Mounting Housings	OEM Part #
AS1L16S4	16	AS1L16S10	1/2"	single lever, single port, high construction	CZAP 25 L
AS2L16S4	16 x 2	AS2L16S10	1/2" x 2	single lever, double port, high construction	CZAP 25 L2
AS1L16S5	21	AS1L16S11	3/4"	single lever, single port, high construction	CZAP 25 L21
AS2L16SC5	21 x 2	AS2L16SC11	3/4" x 2	single lever and cover, double port, high construction	CZAP 25 LS 221

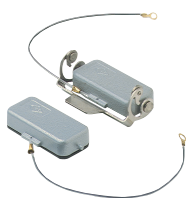
## Hoods



Series A **16 poles +  $\frac{1}{2}$**

Pg Part #	Pg	NPT Part #	NPT	Surface Mounting Housings	OEM Part #
ASEP16S4	16	ASEP16S10	1/2"	two pegs, side entry	CZO 25 L
ASTP16S4	16	ASTP16S10	1/2"	two pegs, side entry, high construction	CZAO 25 L16
ASTP16S5	21	ASTP16S11	3/4"	two pegs, side entry, high construction	CZAO 25 L21
Atep16S4	16	Atep16S10	1/2"	two pegs, top entry	CZV 25 L
<b>ATTP16S4</b>	<b>16</b>	<b>ATTP16S10</b>	<b>1/2"</b>	<b>two pegs, top entry, high construction</b>	<b>CZAV 25 L16</b>
ATTP16S5	21	ATTP16S11	3/4"	two pegs, top entry, high construction	CZAV 25 L21
ACC16S4	16	ACC16S10	1/2"	single lever, top entry, cable coupler (not shown)	CZV 25 LG

## Covers



Series A **16 poles +  $\frac{1}{2}$**

Part #	Covers	OEM Part #
AP16SL	two pegs (for housings with single lever)	CZC 25 L
AL16SL	single lever (for hoods with two pegs)	CZC 25 LG

CZ and MZ enclosures

size "66.16" standard version

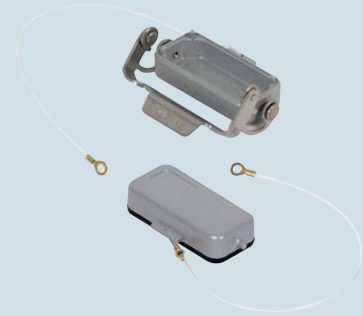


hoods for single lever



Covers L and LG versions are not suitable to be used with code pins. If this application is required please contact ILME SpA.

covers



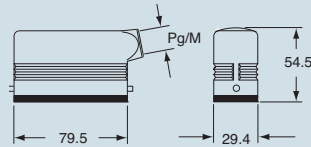
description	part No.	entry Pg	part No.	entry M	part No.
with pegs, side entry	<b>CZO 25 L</b>	16	<b>MZO 25 L20</b>	20	
with pegs, side entry			<b>MZO 25 L25</b>	25	
with pegs, side entry, high construction	<b>CZAO 25 L16</b>	16	<b>MZAO 25 L20</b>	20	
with pegs, side entry, high construction	<b>CZAO 25 L21</b>	21	<b>MZAO 25 L25</b>	25	
with pegs, top entry	<b>CZV 25 L</b>	16	<b>MZV 25 L20 **</b>	20	
with pegs, top entry, high construction	<b>CZAV 25 L16</b>	16	<b>MZAV 25 L20</b>	20	
with pegs, top entry, high construction	<b>CZAV 25 L21</b>	21	<b>MZAV 25 L25</b>	25	
with pegs, side entry, high construction, without adaptor *	<b>CZFO 25 L16</b>	16	<b>MZFO 25 L20</b>	20	
with pegs, side entry, high construction, without adaptor *	<b>CZFO 25 L21</b>	21	<b>MZFO 25 L25</b>	25	
with pegs, top entry, high construction, without adaptor *	<b>CZFV 25 L16</b>	16	<b>MZFV 25 L20</b>	20	
with pegs, top entry, high construction, without adaptor *	<b>CZFV 25 L21</b>	21	<b>MZFV 25 L25</b>	25	
with pegs (for enclosures with lever)					<b>CZC 25 L</b>
with basic lever (for enclosures with pegs)					<b>CZC 25 LG</b>

\* enclosure without adaptor, threaded on the body, to be used only with a complete cable clamp.

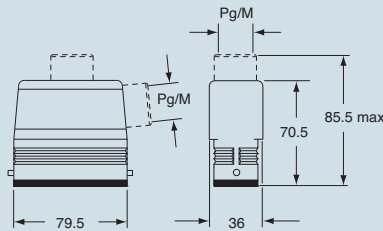
\*\* can only be used with a complete cable clamp (to be purchased separately)

dimensions in mm

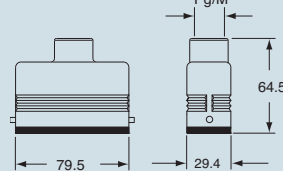
**CZO L and MZO L**



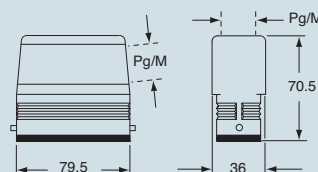
**CZAO L - MZAO L and CZAV L - MZAV L**



**CZV L and MZV L**



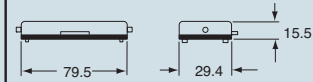
**CZFO L - MZFO L and CZFV L - MZFV L**



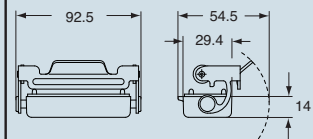
dimensions shown are not binding and may be changed without notice

dimensions in mm

**CZC L**



**CZC LG**



# GENERAL FEATURES OF MULTIPOLE CONNECTORS FOR INDUSTRIAL PURPOSES

- 1 Threaded cable passage in various Pg diameters, metric diameters in accordance with EN 60423 and "NPT" diameters, for cable entry devices in accordance with EN 50262, may be located vertically, horizontally or frontally.
- 2 Heavy duty enclosures in die-cast aluminium alloy or self-extinguishing thermoplastic (A-03 series).  
Wall mounting or bulkhead housings and hoods are available, with or without fixed covers or with mobile protection covers.
- 3 Metallic enclosures with a coated finish of epoxy-polyester with high resistance to mechanical stress and external agents. Enclosures used with temperatures of up to 180°C and in aggressive environments

are treated with special coatings. Where electromagnetic compatibility is necessary: EMC enclosures with high conductivity and high corrosion resistance surface treatment.

- 4 Inserts in self-extinguishing thermoplastic material reinforced with glass fibres, UL approved, with a limit working temperature from -40°C to +125°C. For some series, inserts in PPS (polyphenylene sulphide) may be requested for special uses with temperatures of up to 180°C.
- 5 Polarized inserts with asymmetric guide rails for preventing incorrect coupling. The inserts have a mechanical duration equal to or over 500 coupling cycles.

- 6 Inserts manufactured in conformity with the DIN VDE 0627 standard and are certified and identified with the UL and CSA marks.
- 7 Special seal gaskets in vinyl nitrile elastomer or fluoro elastomer (on enclosures for use with maximum temperatures of 180°C and for aggressive environments), in antiaging, oil-resistant, fuel-resistant, together with the cable entry devices (not supplied) provide an IP66 degree of protection for coupled connectors.  
Special conductive seals for EMC enclosures.
- 8 Stainless steel closure levers and springs guarantee a perfect closure and sealing.
- 9 Locking device available in two versions, simple (with one lever), or double (with two levers).

- 10 Various types of handles are available: in self-extinguishing, thermoplastic material reinforced with glass fibres; in die-cast aluminium (for special use with temperatures of up to 180°C); monoblock stainless steel handles (A-03 enclosures and for special uses with temperatures of up to 180°C).
- 11 Unlosable insert fastening screws, with antiloosening flexible washer.
- 12 Contacts position identified with numbers or codes on both sides of each insert and laser printed or moulded.
- 13 Contacts in silver or gold-plated brass (special order) with connections to the conductors made via unlosable unloosened screws, spring terminal, crimping or incorporated 45° terminal block connectors (with screw or spring terminal).
- 14 Earth terminal protection with wide contact surface.
- 15 Pegs and levers supplied with anti-friction rings that facilitate closure and limit wear and tear.
- 16 CE marking attesting conformity to the requirements of the Low Voltage directive 73/23/EEC and its modification 93/68/EEC.

