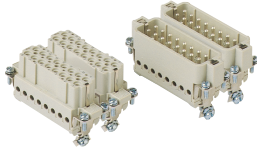


# HEAVY DUTY MULTIPOLE CONNECTORS



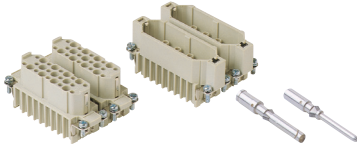
## Inserts



### Series A **32 poles + $\frac{1}{2}$ 16A max - 600V**

Part #	Screw Terminal	OEM Part #
<b>A16RS + A32RS</b>	female inserts, No. (1 ÷ 16) and (17 ÷ 32)	<b>CDAF 16 N</b>
<b>A16PS + A32PS</b>	male inserts, No. (1 ÷ 16) and (17 ÷ 32)	<b>CDAM 16 N</b>

+ Both part numbers **must** be ordered **Wire conductor range: 18 ÷ 12 AWG**

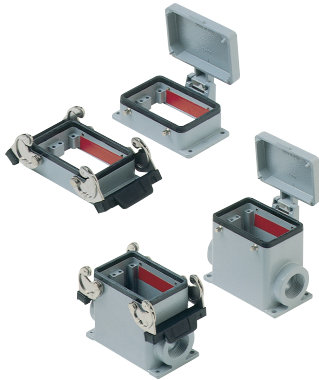


### Series D **50 poles + $\frac{1}{2}$ 10A max - 600V**

Part #	Crimp Terminal	OEM Part #
<b>D25RC(x2)</b>	female inserts, No. (1 ÷ 25)	<b>CDF 25</b>
<b>D25PC(x2)</b>	male inserts, No. (1 ÷ 25)	<b>CDM 25</b>

**Wire conductor range: 22 ÷ 14 AWG**  
10A Crimp Contacts must be ordered separately

## Bases



### Series A **32 poles + $\frac{1}{2}$**

Part #	Panel Mounting Housings	OEM Part #
<b>APML32D</b>	double levers	<b>CHI 50</b>
<b>APMP32DC</b>	four pegs and cover	<b>CHI 50 CS</b>

Pg Part #	Pg	NPT Part #	NPT	Surface Mounting Housings	OEM Part #
<b>AS1L32D5</b>	21	<b>AS1L32D11</b>	3/4"	double levers, single port	<b>CHP 50.21</b>
<b>AS2L32D5</b>	21 x 2	<b>AS2L32D11</b>	3/4" x 2	double levers, double port	<b>CHP 50.221</b>
<b>AS1L32D6</b>	<b>29</b>	<b>AS1L32D12</b>	<b>1"</b>	<b>double levers, single port</b>	<b>CHP 50.229</b>
<b>AS2L32D6</b>	29 x 2	<b>AS2L32D12</b>	1" x 2	double levers, double port	<b>CHP 50.29</b>
<b>AS1P32C5</b>	21	<b>AS1P32D11</b>	3/4"	four pegs and cover, single port	
<b>AS2P32C5</b>	21 x 2	<b>AS2P32D11</b>	3/4" x 2	four pegs and cover, double port	
<b>AS1P32C6</b>	29	<b>AS1P32D12</b>	1"	four pegs and cover, single port	
<b>AS2P32C6</b>	29 x 2	<b>AS2P32D12</b>	1" x 2	four pegs and cover, double port	

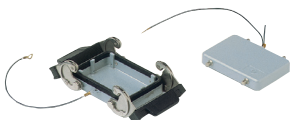
## Hoods



### Series A **32 poles + $\frac{1}{2}$**

Pg Part #	Pg	NPT Part #	NPT	Hoods	OEM Part #
<b>ASEP32D5</b>	21	<b>ASEP32D11</b>	3/4"	four pegs, side entry	<b>CHO 50</b>
<b>ASTP32D5</b>	21	<b>ASTP32D11</b>	3/4"	four pegs, side entry, high construction	<b>CAO 50.21</b>
<b>ASTP32D6</b>	29	<b>ASTP32D12</b>	1"	four pegs, side entry, high construction	<b>CAO 50.29</b>
<b>ATTP32D5</b>	21	<b>ATTP32D11</b>	3/4"	four pegs, top entry, high construction	<b>CAV 50.21</b>
<b>ATTP32D6</b>	29	<b>ATTP32D12</b>	1"	four pegs, top entry, high construction	<b>CAV 50.29</b>
<b>ASEL32D5</b>	21	<b>ASEL32D11</b>	3/4"	double levers, side entry	<b>CHO 50 X</b>
<b>ASTL32D5</b>	21	<b>ASTL32D11</b>	3/4"	double levers, side entry, high construction	<b>CAO 50 X</b>
<b>ASTL32D6</b>	29	<b>ASTL32D12</b>	1"	double levers, side entry, high construction	<b>CAO 50 X29</b>
<b>ATTL32D5</b>	21	<b>ATTL32D11</b>	3/4"	double levers, top entry, high construction	<b>CAV 50 X</b>
<b>ATTL32D6</b>	29	<b>ATTL32D12</b>	1"	double levers, top entry, high construction	<b>CAV 50 X29</b>
<b>ACC32D6</b>	29	<b>ACC32D12</b>	1"	double levers, top entry, cable coupler (not shown)	<b>CAV 50 G29</b>

## Covers



### Series A **32 poles + $\frac{1}{2}$**

Part #	Covers	OEM Part #
<b>AP32DL</b>	four pegs (for housings with double levers)	<b>CHC 50</b>
<b>AL32DL</b>	double levers (for hoods with four pegs)	<b>CHC 50 G</b>

CH - CA and MH - MA enclosures

size "66.40" standard version



insert centre distance:  
2 x (66 x 16) mm

bulkhead mounting housings  
with 2 levers or 4 pegs



surface mounting housings  
with 2 levers or 4 pegs

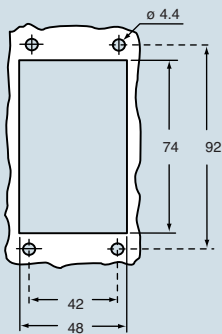


description	bulkhead mounting housings		surface mounting housings	
	part No.	entry Pg	part No.	entry M
with levers	CHI 50			
with pegs and cover <sup>1)</sup>	CHI 50 CS			
with levers		CHP 50.21 21	MHP 50.32 32	
with levers		CHP 50.221 21 x 2	MHP 50.232 32 x 2	
with levers		CHP 50.29 29	MHP 50.40 40	
with levers		CHP 50.229 29 x 2	MHP 50.240 40 x 2	
with pegs and cover <sup>1)</sup>		CHP 50 CS 21	MHP 50 CS32 32	
with pegs and cover <sup>1)</sup>		CHP 50 CS2 21 x 2	MHP 50 CS232 32 x 2	
with pegs and cover <sup>1)</sup>		CHP 50 CS29 29	MHP 50 CS40 40	
with pegs and cover <sup>1)</sup>		CHP 50 CS229 29 x 2	MHP 50 CS240 40 x 2	

<sup>1)</sup> May be combined with hoods:  
- CHO/CAO 50 X and CAV 50 X  
- MHO/MAO/MFO 50 X and MAV/MFV 50 X

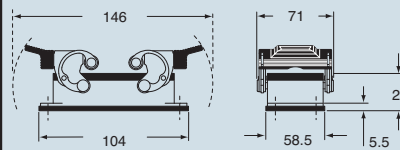
**N.B.:** the enclosures ensure IP66 protection (or IP65 cover versions) rating when mated and locked with the closing levers.  
The cover (CS, CP) only ensures mechanical protection, but does not ensure IP65 protection rating.

panel cut-out for bulkhead mounting housings in mm

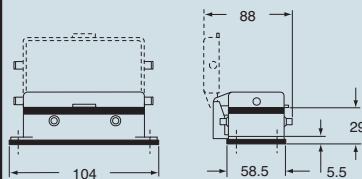


dimensions in mm

CHI

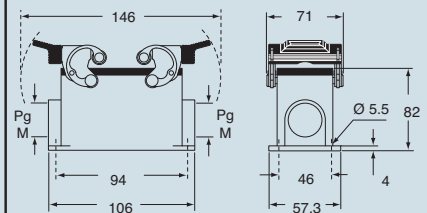


CHI CS

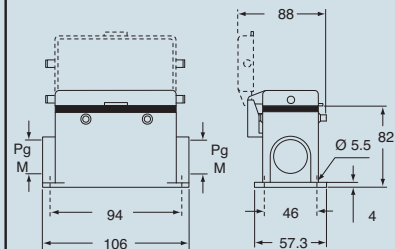


dimensions in mm

CHP and MHP



CHP CS and MHP CS



**CAUS**® Type 4/4X/12

dimensions shown are not binding  
and may be changed without notice

# GENERAL FEATURES OF MULTIPOLE CONNECTORS FOR INDUSTRIAL PURPOSES

- 1 Threaded cable passage in various Pg diameters, metric diameters in accordance with EN 60423 and "NPT" diameters, for cable entry devices in accordance with EN 50262, may be located vertically, horizontally or frontally.
- 2 Heavy duty enclosures in die-cast aluminium alloy or self-extinguishing thermoplastic (A-03 series).  
Wall mounting or bulkhead housings and hoods are available, with or without fixed covers or with mobile protection covers.
- 3 Metallic enclosures with a coated finish of epoxy-polyester with high resistance to mechanical stress and external agents. Enclosures used with temperatures of up to 180°C and in aggressive environments

are treated with special coatings. Where electromagnetic compatibility is necessary: EMC enclosures with high conductivity and high corrosion resistance surface treatment.

- 4 Inserts in self-extinguishing thermoplastic material reinforced with glass fibres, UL approved, with a limit working temperature from -40°C to +125°C. For some series, inserts in PPS (polyphenylene sulphide) may be requested for special uses with temperatures of up to 180°C.
- 5 Polarized inserts with asymmetric guide rails for preventing incorrect coupling. The inserts have a mechanical duration equal to or over 500 coupling cycles.

- 6 Inserts manufactured in conformity with the DIN VDE 0627 standard and are certified and identified with the UL and CSA marks.
- 7 Special seal gaskets in vinyl nitrile elastomer or fluoro elastomer (on enclosures for use with maximum temperatures of 180°C and for aggressive environments), in antiaging, oil-resistant, fuel-resistant, together with the cable entry devices (not supplied) provide an IP66 degree of protection for coupled connectors.  
Special conductive seals for EMC enclosures.
- 8 Stainless steel closure levers and springs guarantee a perfect closure and sealing.
- 9 Locking device available in two versions, simple (with one lever), or double (with two levers).

- 10 Various types of handles are available: in self-extinguishing, thermoplastic material reinforced with glass fibres; in die-cast aluminium (for special use with temperatures of up to 180°C); monoblock stainless steel handles (A-03 enclosures and for special uses with temperatures of up to 180°C).
- 11 Unlosable insert fastening screws, with antiloosening flexible washer.
- 12 Contacts position identified with numbers or codes on both sides of each insert and laser printed or moulded.
- 13 Contacts in silver or gold-plated brass (special order) with connections to the conductors made via unlosable unloosened screws, spring terminal, crimping or incorporated 45° terminal block connectors (with screw or spring terminal).
- 14 Earth terminal protection with wide contact surface.
- 15 Pegs and levers supplied with anti-friction rings that facilitate closure and limit wear and tear.
- 16 CE marking attesting conformity to the requirements of the Low Voltage directive 73/23/EEC and its modification 93/68/EEC.

