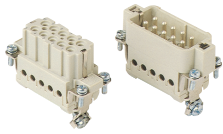


HEAVY DUTY MULTIPOLE CONNECTORS



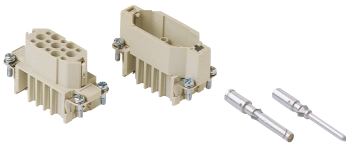
Inserts



Series A **10 poles + $\frac{1}{2}$ 16A max - 600V**

Part #	Screw Terminal	OEM Part #
A10RS	female inserts	CDAF 10
A10PS	male inserts	CDAM 10

Wire conductor range: 18 ÷ 12 AWG



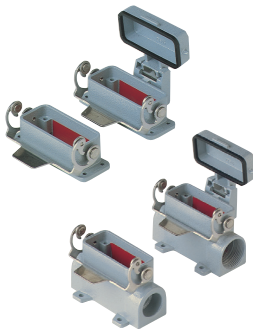
Series D **15 poles + $\frac{1}{2}$ 10A max - 600V**

Part #	Crimp Terminal	OEM Part #
D15RC	female inserts	CDF 15
D15PC	male inserts	CDM 15

Wire conductor range: 22 ÷ 14 AWG

10A Crimp Contacts must be ordered separately

Bases



Series A **10 poles + $\frac{1}{2}$**

Part #	Panel Mounting Housings	OEM Part #
APML10S	single lever	CZI 15 L
APML10SC	single lever and cover	CZI 15 LS

Pg Part #	Pg	NPT Part #	NPT	Surface Mounting Housings	OEM Part #
AS1L10S4	16	AS1L10S10	1/2"	single lever, single port	CZP 15 L
AS2L10S4	16 x2	AS2L10S10	1/2" x 2	single lever, double port	CZP 15 L2
AS1L10S5	21	AS1L10S11	3/4"	single lever, single port	CZP 15 L21
AS2L10SC5	21 x2	AS2L10SC11	3/4" x 2	single lever and cover, double port	CZP 15 LS 221

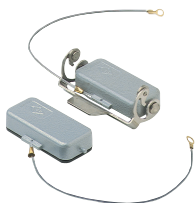
Hoods



Series A **10 poles + $\frac{1}{2}$**

Pg Part #	Pg	NPT Part #	NPT	Surface Mounting Housings	OEM Part #
ASEP10S4	16	ASEP10S10	1/2"	two pegs, side entry	CZO 15 L
ASTP10S4	16	ASTP10S10	1/2"	two pegs, side entry, high construction	CZAO 15 L 16
ASTP10S5	21	ASTP10S11	3/4"	two pegs, side entry, high construction	CZAO 15 L 21
ATEP10S3	13.5	ATEP10S10	1/2"	two pegs, top entry	CZV 15 L
ATTP10S4	16	ATTP10S10	1/2"	two pegs, top entry, high construction	CZAV 15 L 16
ATTP10S5	21	ATTP10S11	3/4"	two pegs, top entry, high construction	CZAV 15 L 21
ACC10S4	16	ACC10S10	1/2"	single lever, top entry, cable coupler (not shown)	

Covers



Series A **10 poles + $\frac{1}{2}$**

Part #	Covers	OEM Part #
AP10SL	two pegs (for housings with single lever)	CZC 15 L
AL10SL	single lever (for hoods with two pegs)	CZC 15 LG

CZ and MZ enclosures

size "49.16" standard version



bulkhead mounting housings with single lever

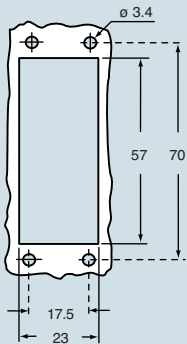


surface mounting housings with single lever



description	part No.	part No.		part No.	
		entry Pg		entry M	
with basic lever	CZI 15 L				
with basic lever and cover	CZI 15 LS				
with basic lever		CZP 15 L	16	MZP 15 L225	25
with basic lever		CZP 15 L2	16 x 2	MZP 15 L25	25
with basic lever		CZP 15 L21	21		
with basic lever and cover		CZP 15 LS221	21 x 2	MZP 15 LS225	25 x 2

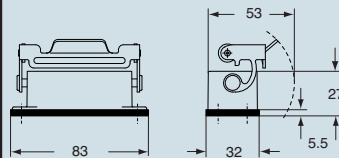
panel cut-out for bulkhead mounting housings in mm



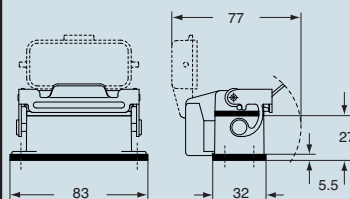
N.B.: the enclosures ensure IP66 protection rating when mated and locked with the closing levers.

dimensions in mm

CZI L

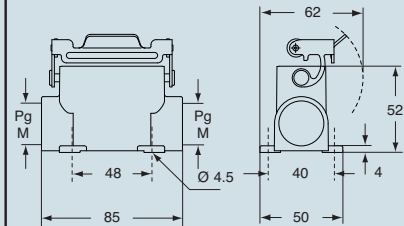


CZI LS

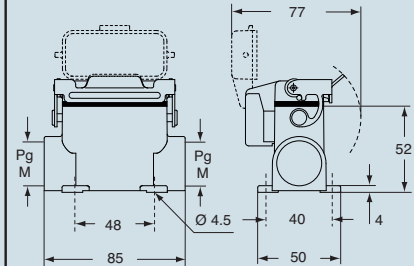


dimensions in mm

CZP L and MZP L



CZP LS and MZP LS



dimensions shown are not binding and may be changed without notice

GENERAL FEATURES OF MULTIPOLE CONNECTORS FOR INDUSTRIAL PURPOSES

- 1 Threaded cable passage in various Pg diameters, metric diameters in accordance with EN 60423 and "NPT" diameters, for cable entry devices in accordance with EN 50262, may be located vertically, horizontally or frontally.
- 2 Heavy duty enclosures in die-cast aluminium alloy or self-extinguishing thermoplastic (A-03 series).
Wall mounting or bulkhead housings and hoods are available, with or without fixed covers or with mobile protection covers.
- 3 Metallic enclosures with a coated finish of epoxy-polyester with high resistance to mechanical stress and external agents. Enclosures used with temperatures of up to 180°C and in aggressive environments

are treated with special coatings. Where electromagnetic compatibility is necessary: EMC enclosures with high conductivity and high corrosion resistance surface treatment.

- 4 Inserts in self-extinguishing thermoplastic material reinforced with glass fibres, UL approved, with a limit working temperature from -40°C to +125°C. For some series, inserts in PPS (polyphenylene sulphide) may be requested for special uses with temperatures of up to 180°C.
- 5 Polarized inserts with asymmetric guide rails for preventing incorrect coupling. The inserts have a mechanical duration equal to or over 500 coupling cycles.

- 6 Inserts manufactured in conformity with the DIN VDE 0627 standard and are certified and identified with the UL and CSA marks.
- 7 Special seal gaskets in vinyl nitrile elastomer or fluoro elastomer (on enclosures for use with maximum temperatures of 180°C and for aggressive environments), in antiaging, oil-resistant, fuel-resistant, together with the cable entry devices (not supplied) provide an IP66 degree of protection for coupled connectors.
Special conductive seals for EMC enclosures.
- 8 Stainless steel closure levers and springs guarantee a perfect closure and sealing.
- 9 Locking device available in two versions, simple (with one lever), or double (with two levers).

- 10 Various types of handles are available: in self-extinguishing, thermoplastic material reinforced with glass fibres; in die-cast aluminium (for special use with temperatures of up to 180°C); monoblock stainless steel handles (A-03 enclosures and for special uses with temperatures of up to 180°C).
- 11 Unlosable insert fastening screws, with antiloosening flexible washer.
- 12 Contacts position identified with numbers or codes on both sides of each insert and laser printed or moulded.
- 13 Contacts in silver or gold-plated brass (special order) with connections to the conductors made via unlosable unloosened screws, spring terminal, crimping or incorporated 45° terminal block connectors (with screw or spring terminal).
- 14 Earth terminal protection with wide contact surface.
- 15 Pegs and levers supplied with anti-friction rings that facilitate closure and limit wear and tear.
- 16 CE marking attesting conformity to the requirements of the Low Voltage directive 73/23/EEC and its modification 93/68/EEC.

