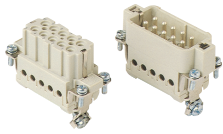


HEAVY DUTY MULTIPOLE CONNECTORS



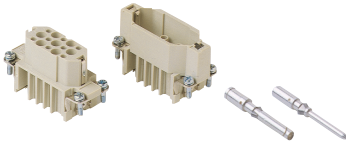
Inserts



Series A **10 poles + $\frac{1}{2}$ 16A max - 600V**

Part #	Screw Terminal	OEM Part #
A10RS	female inserts	CDAF 10
A10PS	male inserts	CDAM 10

Wire conductor range: 18 ÷ 12 AWG



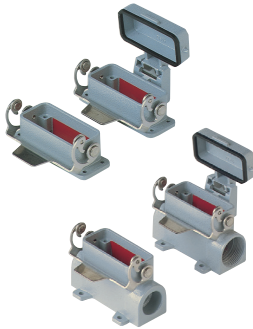
Series D **15 poles + $\frac{1}{2}$ 10A max - 600V**

Part #	Crimp Terminal	OEM Part #
D15RC	female inserts	CDF 15
D15PC	male inserts	CDM 15

Wire conductor range: 22 ÷ 14 AWG

10A Crimp Contacts must be ordered separately

Bases



Series A **10 poles + $\frac{1}{2}$**

Part #	Panel Mounting Housings	OEM Part #
APML10S	single lever	CZI 15 L
APML10SC	single lever and cover	CZI 15 LS

Pg Part #	Pg	NPT Part #	NPT	Surface Mounting Housings	OEM Part #
AS1L10S4	16	AS1L10S10	1/2"	single lever, single port	CZP 15 L
AS2L10S4	16 x2	AS2L10S10	1/2" x 2	single lever, double port	CZP 15 L2
AS1L10S5	21	AS1L10S11	3/4"	single lever, single port	CZP 15 L21
AS2L10SC5	21 x2	AS2L10SC11	3/4" x 2	single lever and cover, double port	CZP 15 LS221

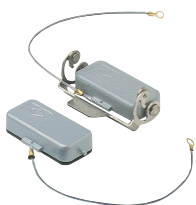
Hoods



Series A **10 poles + $\frac{1}{2}$**

Pg Part #	Pg	NPT Part #	NPT	Surface Mounting Housings	OEM Part #
ASEP10S4	16	ASEP10S10	1/2"	two pegs, side entry	CZO 15 L
ASTP10S4	16	ASTP10S10	1/2"	two pegs, side entry, high construction	CZAO 15 L16
ASTP10S5	21	ASTP10S11	3/4"	two pegs, side entry, high construction	CZAO 15 L21
ATEP10S3	13.5	ATEP10S10	1/2"	two pegs, top entry	CZV 15 L
ATTP10S4	16	ATTP10S10	1/2"	two pegs, top entry, high construction	CZAV 15 L16
ATTP10S5	21	ATTP10S11	3/4"	two pegs, top entry, high construction	CZAV 15 L21
ACC10S4	16	ACC10S10	1/2"	single lever, top entry, cable coupler (not shown)	

Covers



Series A **10 poles + $\frac{1}{2}$**

Part #	Covers	OEM Part #
AP10SL	two pegs (for housings with single lever)	CZC 15 L
AL10SL	single lever (for hoods with two pegs)	CZC 15 LG

CZ and MZ enclosures

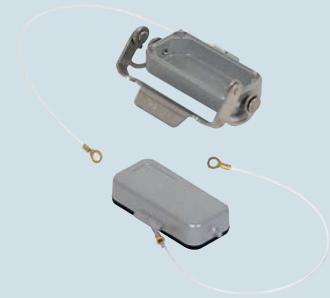
size "49.16" standard version



hoods for single lever



covers



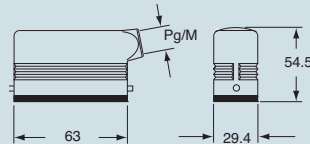
Covers L and LG versions are not suitable to be used with code pins. If this application is required please contact ILME SpA.

description	part No.	entry Pg	part No.	entry M	part No.
with pegs, side entry	CZO 15 L	16	MZO 15 L20	20	
with pegs, side entry			MZO 15 L25	25	
with pegs, side entry, high construction	CZAO 15 L16	16	MZAO 15 L20	20	
with pegs, side entry, high construction	CZAO 15 L21	21	MZAO 15 L25	25	
with pegs, top entry	CZV 15 L	13.5	MZV 15 L20	20	
with pegs, top entry, high construction	CZAV 15 L16	16	MZAV 15 L20	20	
with pegs, top entry, high construction	CZAV 15 L21	21	MZAV 15 L25	25	
with pegs, side entry, high construction, without adaptor *	CZFO 15 L16	16	MZFO 15 L20	20	
with pegs, side entry, high construction, without adaptor *	CZFO 15 L21	21	MZFO 15 L25	25	
with pegs, top entry, high construction, without adaptor *	CZFV 15 L16	16	MZFV 15 L20	20	
with pegs, top entry, high construction, without adaptor *	CZFV 15 L21	21	MZFV 15 L25	25	
with pegs (for enclosures with lever)					CZC 15 L
with basic lever (for enclosures with pegs)					CZC 15 LG

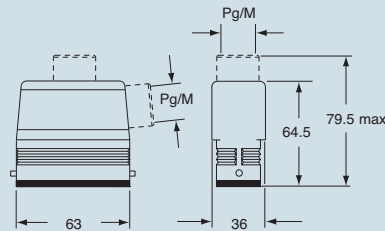
* enclosure without adaptor, threaded on the body, to be used only with a complete cable clamp.

dimensions in mm

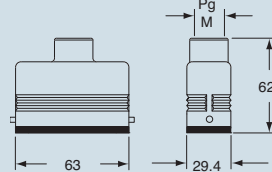
CZO L and MZO L



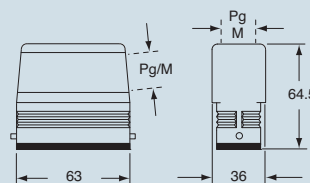
CZAO L - MZAO L and CZAV L - MZAV L



CZV L and MZV L

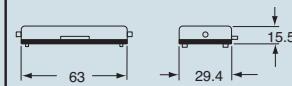


CZFO L - MZFO L and CZFV L - MZFV L

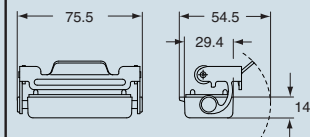


dimensions in mm

CZC L



CZC LG



ILME® Type 4/4X/12

dimensions shown are not binding and may be changed without notice

GENERAL FEATURES OF MULTIPOLE CONNECTORS FOR INDUSTRIAL PURPOSES

- 1 Threaded cable passage in various Pg diameters, metric diameters in accordance with EN 60423 and "NPT" diameters, for cable entry devices in accordance with EN 50262, may be located vertically, horizontally or frontally.
- 2 Heavy duty enclosures in die-cast aluminium alloy or self-extinguishing thermoplastic (A-03 series).
Wall mounting or bulkhead housings and hoods are available, with or without fixed covers or with mobile protection covers.
- 3 Metallic enclosures with a coated finish of epoxy-polyester with high resistance to mechanical stress and external agents. Enclosures used with temperatures of up to 180°C and in aggressive environments

are treated with special coatings. Where electromagnetic compatibility is necessary: EMC enclosures with high conductivity and high corrosion resistance surface treatment.

- 4 Inserts in self-extinguishing thermoplastic material reinforced with glass fibres, UL approved, with a limit working temperature from -40°C to +125°C. For some series, inserts in PPS (polyphenylene sulphide) may be requested for special uses with temperatures of up to 180°C.
- 5 Polarized inserts with asymmetric guide rails for preventing incorrect coupling. The inserts have a mechanical duration equal to or over 500 coupling cycles.

- 6 Inserts manufactured in conformity with the DIN VDE 0627 standard and are certified and identified with the UL and CSA marks.
- 7 Special seal gaskets in vinyl nitrile elastomer or fluoro elastomer (on enclosures for use with maximum temperatures of 180°C and for aggressive environments), in antiaging, oil-resistant, fuel-resistant, together with the cable entry devices (not supplied) provide an IP66 degree of protection for coupled connectors.
Special conductive seals for EMC enclosures.
- 8 Stainless steel closure levers and springs guarantee a perfect closure and sealing.
- 9 Locking device available in two versions, simple (with one lever), or double (with two levers).

- 10 Various types of handles are available: in self-extinguishing, thermoplastic material reinforced with glass fibres; in die-cast aluminium (for special use with temperatures of up to 180°C); monoblock stainless steel handles (A-03 enclosures and for special uses with temperatures of up to 180°C).
- 11 Unlosable insert fastening screws, with antiloosening flexible washer.
- 12 Contacts position identified with numbers or codes on both sides of each insert and laser printed or moulded.
- 13 Contacts in silver or gold-plated brass (special order) with connections to the conductors made via unlosable unloosened screws, spring terminal, crimping or incorporated 45° terminal block connectors (with screw or spring terminal).
- 14 Earth terminal protection with wide contact surface.
- 15 Pegs and levers supplied with anti-friction rings that facilitate closure and limit wear and tear.
- 16 CE marking attesting conformity to the requirements of the Low Voltage directive 73/23/EEC and its modification 93/68/EEC.

