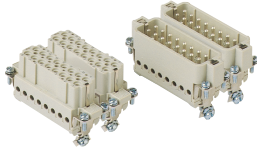


HEAVY DUTY MULTIPOLE CONNECTORS



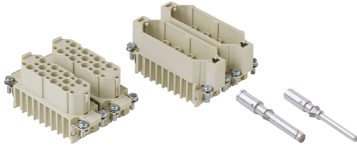
Inserts



Series A **32 poles + 1/2 16A max - 600V**

Part #	Screw Terminal	OEM Part #
A16RS + A32RS	female inserts, No. (1 ÷ 16) and (17 ÷ 32)	CDAF 16 N
A16PS + A32PS	male inserts, No. (1 ÷ 16) and (17 ÷ 32)	CDAM 16 N

+ Both part numbers **must** be ordered **Wire conductor range: 18 ÷ 12 AWG**

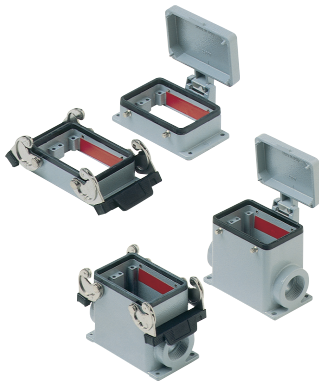


Series D **50 poles + 1/2 10A max - 600V**

Part #	Crimp Terminal	OEM Part #
D25RC(x2)	female inserts, No. (1 ÷ 25)	CDF 25
D25PC(x2)	male inserts, No. (1 ÷ 25)	CDM 25

Wire conductor range: 22 ÷ 14 AWG
 10A Crimp Contacts must be ordered separately

Bases

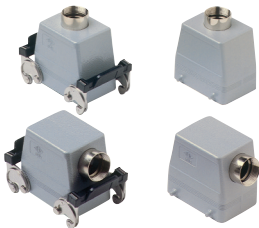


Series A **32 poles + 1/2**

Part #	Panel Mounting Housings	OEM Part #
APML32D	double levers	CHI 50
APMP32DC	four pegs and cover	CHI 50 CS

Pg Part #	Pg	NPT Part #	NPT	Surface Mounting Housings	OEM Part #
AS1L32D5	21	AS1L32D11	3/4"	double levers, single port	CHP 50.21
AS2L32D5	21 x 2	AS2L32D11	3/4" x 2	double levers, double port	CHP 50.221
AS1L32D6	29	AS1L32D12	1"	double levers, single port	CHP 50.221
AS2L32D6	29 x 2	AS2L32D12	1" x 2	double levers, double port	CHP 50.29
AS1P32C5	21	AS1P32D11	3/4"	four pegs and cover, single port	
AS2P32C5	21 x 2	AS2P32D11	3/4" x 2	four pegs and cover, double port	
AS1P32C6	29	AS1P32D12	1"	four pegs and cover, single port	
AS2P32C6	29 x 2	AS2P32D12	1" x 2	four pegs and cover, double port	

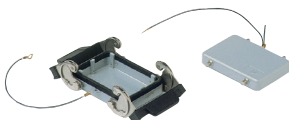
Hoods



Series A **32 poles + 1/2**

Pg Part #	Pg	NPT Part #	NPT	Hoods	OEM Part #
ASEP32D5	21	ASEP32D11	3/4"	four pegs, side entry	CHO 50
ASTP32D5	21	ASTP32D11	3/4"	four pegs, side entry, high construction	CAO 50.21
ASTP32D6	29	ASTP32D12	1"	four pegs, side entry, high construction	CAO 50.29
ATTP32D5	21	ATTP32D11	3/4"	four pegs, top entry, high construction	CAV 50.21
ATTP32D6	29	ATTP32D12	1"	four pegs, top entry, high construction	CAV 50.29
ASEL32D5	21	ASEL32D11	3/4"	double levers, side entry	CHO 50 X
ASTL32D5	21	ASTL32D11	3/4"	double levers, side entry, high construction	CAO 50 X
ASTL32D6	29	ASTL32D12	1"	double levers, side entry, high construction	CAO 50 X29
ATTL32D5	21	ATTL32D11	3/4"	double levers, top entry, high construction	CAV 50 X
ATTL32D6	29	ATTL32D12	1"	double levers, top entry, high construction	CAV 50 X29
ACC32D6	29	ACC32D12	1"	double levers, top entry, cable coupler (not shown)	CAV 50 G29

Covers



Series A **32 poles + 1/2**

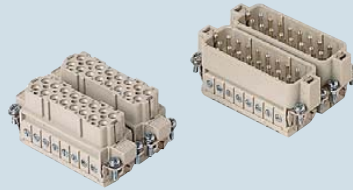
Part #	Covers	OEM Part #
AP32DL	four pegs (for housings with double levers)	CHC 50
AL32DL	double levers (for hoods with four pegs)	CHC 50 G

CDA 32 poles + ⊕ 16A - 250V

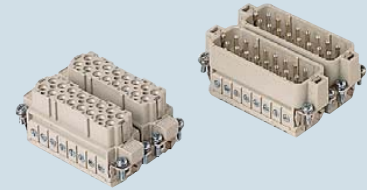


- characteristics according to EN 61984:
16A 250V 4kV 3
 - UL, CSA, CCC, GL certified

inserts,
screw terminal connection



inserts,
screw terminal connection



description	part No.	part No.	part No.	part No.
-------------	----------	----------	----------	----------

indirect, with plate ¹⁾
 female inserts, No. (1-16) and (17-32)
 male inserts, No. (1-16) and (17-32)

CDAF 16
CDAM 16

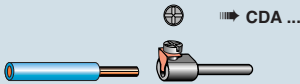
CDAF 16 N
CDAM 16 N

CDAF 16 X
CDAM 16 X

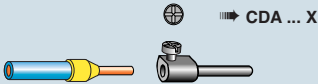
CDAF 16 XN
CDAM 16 XN

direct, without plate ²⁾
 female inserts, No. (1-16) and (17-32)
 male inserts, No. (1-16) and (17-32)

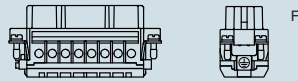
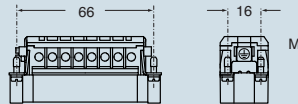
¹⁾ for non-prepared conductors



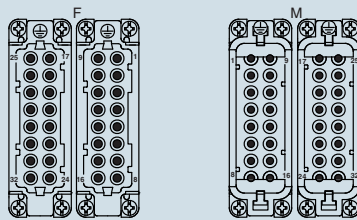
²⁾ for conductors with bush terminal



dimensions in mm

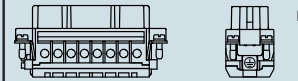


contacts side (front view)

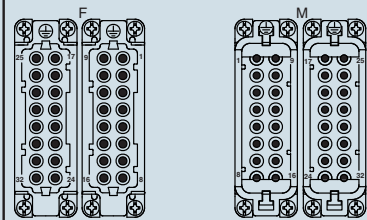


- inserts with plate for section conductors:
 0.75 - 2.5 mm² - AWG 18 - 14

dimensions in mm



contacts side (front view)



- inserts without plate for section prepared conductors:
 0.25 - 2.5 mm² - AWG 24 - 14

dimensions shown are not binding
 and may be changed without notice

GENERAL FEATURES OF MULTIPOLE CONNECTORS FOR INDUSTRIAL PURPOSES

- 1 Threaded cable passage in various Pg diameters, metric diameters in accordance with EN 60423 and "NPT" diameters, for cable entry devices in accordance with EN 50262, may be located vertically, horizontally or frontally.
- 2 Heavy duty enclosures in die-cast aluminium alloy or self-extinguishing thermoplastic (A-03 series).
Wall mounting or bulkhead housings and hoods are available, with or without fixed covers or with mobile protection covers.
- 3 Metallic enclosures with a coated finish of epoxy-polyester with high resistance to mechanical stress and external agents. Enclosures used with temperatures of up to 180°C and in aggressive environments

are treated with special coatings. Where electromagnetic compatibility is necessary: EMC enclosures with high conductivity and high corrosion resistance surface treatment.

- 4 Inserts in self-extinguishing thermoplastic material reinforced with glass fibres, UL approved, with a limit working temperature from -40°C to +125°C. For some series, inserts in PPS (polyphenylene sulphide) may be requested for special uses with temperatures of up to 180°C.
- 5 Polarized inserts with asymmetric guide rails for preventing incorrect coupling. The inserts have a mechanical duration equal to or over 500 coupling cycles.

- 6 Inserts manufactured in conformity with the DIN VDE 0627 standard and are certified and identified with the UL and CSA marks.
- 7 Special seal gaskets in vinyl nitrile elastomer or fluoro elastomer (on enclosures for use with maximum temperatures of 180°C and for aggressive environments), in antiaging, oil-resistant, fuel-resistant, together with the cable entry devices (not supplied) provide an IP66 degree of protection for coupled connectors.
Special conductive seals for EMC enclosures.
- 8 Stainless steel closure levers and springs guarantee a perfect closure and sealing.
- 9 Locking device available in two versions, simple (with one lever), or double (with two levers).

- 10 Various types of handles are available: in self-extinguishing, thermoplastic material reinforced with glass fibres; in die-cast aluminium (for special use with temperatures of up to 180°C); monoblock stainless steel handles (A-03 enclosures and for special uses with temperatures of up to 180°C).
- 11 Unlosable insert fastening screws, with antiloosening flexible washer.
- 12 Contacts position identified with numbers or codes on both sides of each insert and laser printed or moulded.
- 13 Contacts in silver or gold-plated brass (special order) with connections to the conductors made via unlosable unloosened screws, spring terminal, crimping or incorporated 45° terminal block connectors (with screw or spring terminal).
- 14 Earth terminal protection with wide contact surface.
- 15 Pegs and levers supplied with anti-friction rings that facilitate closure and limit wear and tear.
- 16 CE marking attesting conformity to the requirements of the Low Voltage directive 73/23/EEC and its modification 93/68/EEC.

