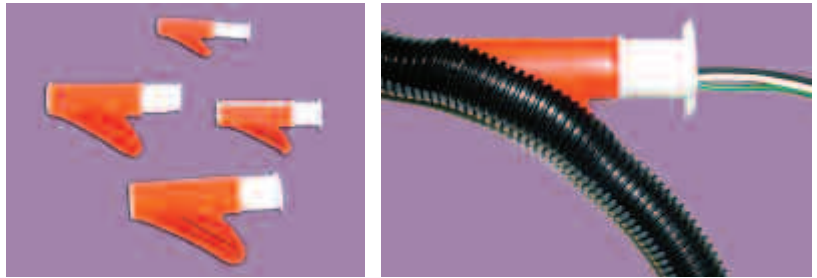


***Split Loom Installation Tool**

For quick & easy installation of Split Loom!

Size Range	Part No.	
1/4", 3/8"	*769828	*NEW
1/2", 5/8"	*769829	*NEW
3/4"	*769830	*NEW
1", 1 1/4"	*769831	*NEW
1 1/2", 2"	*769832	*NEW



Split Loom Installation Tools

TOGGLE SWITCHES (ACCESSORIES & LIGHT-DUTY)



*765099 Self-Standing Toggle Switch Selector Panel

Self-Standing Toggle Switch Selector Panel *NEW

*765099 Use as a Merchandiser/Selection Guide for user to select a toggle switch that suits their needs. Display contains 21 toggle switches with part numbers and specs clearly outlined under each switch

Looking for a switch that you don't see in this catalogue? We've got a lot more to choose from in our new Techspan/Pollak catalogue! Ask for it today!



765001

*765003

765000

Toggle Switch Accessories

Toggle Boots

EPDM rubber boots with 15/32-32 thread. Provides protection against salt spray and is resistant to weather and ozone. You can use these boots on toggle switches with a 15/32" diameter mounting stem.

Type	1 pc/pk	25 pcs/pk	
Closed	765001	*765001B	*NEW
Open	*765003	*765003B	

Toggle Switch Face Plate

Type	1 pc/pk	25 pcs/pk	
On-Off	765000	*765000B	*NEW



765072

765073

Light-Duty Toggle Switches

The best combination of space-saving size and economy for light-duty applications. Universal for Automotive, Light Truck, Off-road and RV's. Furnished with mounting hardware. CSA approved where shown.

S.P.S.T. (SINGLE POLE - SINGLE THROW)

765072 2 Position (OFF-ON) Switch. Nickel-plated 'bat' handle with an on/off indicator and 2 screw terminals. Rating: 6 amps at 125 volts; 3 amps at 250 volts. CSA approved.

Mounting Stem: 15/32" (12mm) long, 15/32" (12mm) diameter.

765073 Same as 765072 but with two 6" leads.

Toggle Switches (Medium-Duty)

Medium-Duty Toggle Switches

A wide selection of circuitry configurations for Heavy-Duty Truck, Off-Road, Automotive and RV applications. Provides durable and long lasting solutions to new and replacement requirements. Rating: 20 amps @ 12VDC. CSA Approved.

S.P.S.T. (SINGLE POLE - SINGLE THROW)

Part No.	Positions	Circuitry	Terminal Type	Amp Rating	Handle Length/Type
765047	2	ON-OFF	2 Blades	20A @ 12VDC	Std. 11/16" Chrome
*765042	2	ON-OFF	2 Blades	20A @ 12VDC	Long 1 1/2" Chrome
765046	2	ON-OFF	2 Screws	20A @ 12VDC	Std. 11/16" Chrome
*765041	2	ON-OFF	2 Screws	20A @ 12VDC	Long 1 1/2" Chrome

***NEW**

S.P.D.T. (SINGLE POLE - DOUBLE THROW)

Part No.	Positions	Circuitry	Terminal Type	Amp Rating	Handle Length/Type
*765052	2	ON-ON	2 Blades	20A @ 12VDC	Std. 11/16" Chrome
765056	3	ON-OFF-ON	3 Blades	20A @ 12VDC	Std. 11/16" Chrome
765054	2	ON-ON	2 Screws	20A @ 12VDC	Std. 11/16" Chrome
765055	3	ON-OFF-ON	3 Screws	20A @ 12VDC	Std. 11/16" Chrome

***NEW**

D.P.S.T. (DOUBLE POLE - SINGLE THROW)

Part No.	Positions	Circuitry	Terminal Type	Amp Rating	Handle Length/Type
765059	2	ON-OFF	4 Blades	20A @ 12VDC	Std. 11/16" Chrome
765058	2	ON-OFF	4 Screws	20A @ 12VDC	Std. 11/16" Chrome

D.P.D.T. (DOUBLE POLE - DOUBLE THROW)

Part No.	Positions	Circuitry	Terminal Type	Amp Rating	Handle Length/Type
*765063	2	ON-ON	6 Blades	20A @ 12VDC	Std. 11/16" Chrome
765066	3	ON-OFF-ON	6 Blades	20A @ 12VDC	Std. 11/16" Chrome
*765068	3	ON-OFF-ON	6 Blades	20A @ 12VDC	Long 1 1/2" Chrome
765064	2	ON-ON	6 Screws	20A @ 12VDC	Std. 11/16" Chrome
765065	3	ON-OFF-ON	6 Screws	20A @ 12VDC	Std. 11/16" Chrome

***NEW**

Medium-Duty 'Momentary' Toggle Switches

A wide selection of circuitry configurations for Heavy-Duty Truck, Off-Road, Automotive and RV applications. Provides durable and long lasting solutions to new and replacement requirements. Rating: 20 amps @ 12VDC. CSA Approved.

S.P.S.T. (SINGLE POLE - SINGLE THROW)

Part No.	Positions	Circuitry	Terminal Type	Amp Rating	Handle Length/Type
*765043	2	Mom ON-OFF	2 Blades	20A @ 12VDC	Std. 11/16" Chrome
765049	2	Mom ON-OFF	2 Screws	20A @ 12VDC	Std. 11/16" Chrome

***NEW**

S.P.D.T. (SINGLE POLE - DOUBLE THROW)

Part No.	Positions	Circuitry	Terminal Type	Amp Rating	Handle Length/Type
*765062	3	Mom ON-OFF-Mom ON	3 Blades	20A @ 12VDC	Std. 11/16" Chrome
765057	3	Mom ON-OFF-Mom ON	3 Screws	20A @ 12VDC	Std. 11/16" Chrome
*765071	3	ON-OFF-Mom ON	3 Screws	20A @ 12VDC	Std. 11/16" Chrome

***NEW**

D.P.D.T. (DOUBLE POLE - DOUBLE THROW)

Part No.	Positions	Circuitry	Terminal Type	Amp Rating	Handle Length/Type
*765074	3	Mom ON-OFF-ON	6 Blades	20A @ 12VDC	Std. 11/16" Chrome
*765069	3	Mom ON-OFF-ON	6 Screws	20A @ 12VDC	Std. 11/16" Chrome
*765070	3	Mom ON-OFF-Mom ON	6 Blades	20A @ 12VDC	Std. 11/16" Chrome
765067	3	Mom ON-OFF-Mom ON	6 Screws	20A @ 12VDC	Std. 11/16" Chrome

***NEW**

Looking for a switch that you don't see in this catalogue? We've got a lot more to choose from in our new Techspan/Pollak catalogue! Ask for it today!



765047

*765042

765046



*765041

*765052

765056



765054

765055

765059



765058

*765063

765066



*765068

765064

765065



*765043

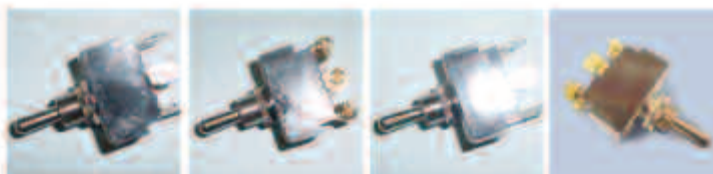
765049



*765062

765057

*765071



*765074

*765069

*765070

765067

Toggle Switches for Marine Applications



765101



765100



765114

Toggle Switches with Nylon Handle

Decorator style toggle switches with an O-ring seal between toggle and bushing for splash proof reliability. Durable nylon housing, nylon face nut and brass terminals resist corrosion. Lighted versions have a transparent Lexan handle (20amps @ 12VDC). Non-lighted versions have solid black handles and are rated at 35 amps @ 12 VDC. CSA Approved where shown.

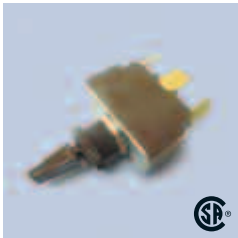
S.P.S.T (SINGLE POLE - SINGLE THROW)

Part No.	Positions	Circuitry	Terminal Type	Amp Rating	Handle Length/Type
765101	2	ON-OFF	2 Blades	35A @ 12VDC	Std 11/16" Black
765100	2	ON-OFF	2 Screws	35A @ 12VDC	Std 11/16" Black

D.P.D.T (DOUBLE POLE - DOUBLE THROW)

Part No.	Positions	Circuitry	Terminal Type	Amp Rating	Handle Length/Type
765114	3	ON-OFF-ON	6 Screws	35A @ 12VDC	Std 11/16" Black

Looking for a switch that you don't see in this catalogue? We've got a lot more to choose from in our new Techspan/Pollak catalogue! Ask for it today!



765105



765104



765117



765116

'Momentary' Toggle Switches with Nylon Handle

Decorator style toggle switches with an O-ring seal between toggle and bushing for splash proof reliability. Durable nylon housing, nylon face nut and brass terminals resist corrosion. Non-lighted versions have solid black handles and are rated at 35 amps @ 12 VDC. CSA Approved where shown.

S.P.D.T (SINGLE POLE - DOUBLE THROW)

Part No.	Positions	Circuitry	Terminal Type	Amp Rating	Handle Length/Type
765105	3	Mom ON-OFF- Mom ON	3 Blades	35A @ 12VDC	Std 11/16" Black
765104	3	Mom ON-OFF- Mom ON	3 Screws	35A @ 12VDC	Std 11/16" Black

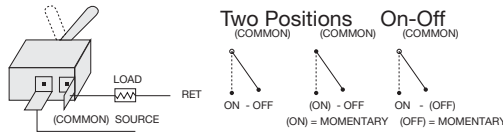
D.P.D.T (DOUBLE POLE - DOUBLE THROW)

Part No.	Positions	Circuitry	Terminal Type	Amp Rating	Handle Length/Type
765117	3	Mom ON-OFF- Mom ON	6 Blades	35A @ 12VDC	Std 11/16" Black
765116	3	Mom ON-OFF- Mom ON	6 Screws	35A @ 12VDC	Std 11/16" Black

SWITCHES INFORMATION

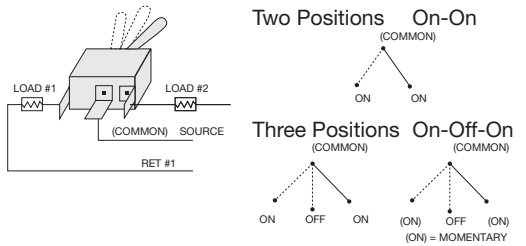
S.P.S.T. (Single Pole/ Single Throw)

A two terminal switch which opens or closes one circuit.



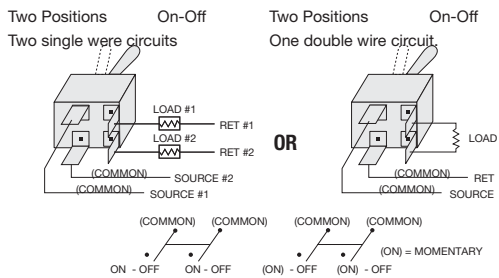
S.P.D.T. (Single Pole /Double Throw)

A three terminal switch that controls two single-wire circuits. Permits only one circuit to be energized at a time.



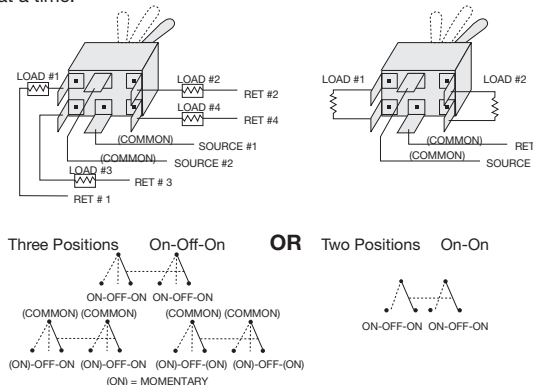
D.P.S.T.(Double Pole/Single Throw)

A four terminal switch that controls one double wire circuit or two single wire circuits.



D.P.D.T. (Double Pole/Double Throw)

A six terminal switch that controls two double wire circuits permitting only one circuit to be energized at a time, or four single wire circuits permitting only two circuits to be energized at a time.



ELECTRICAL TERMS

Ampere Electrical unit indicating rate of flow of electricity through a circuit.

Circuit Path taken by electrical current flowing through conductor from one terminal source of supply to another.

Current The movement of electrons through a conductor measured in amperes.

Double Pole A switch that operates simultaneously in two separate electric circuits.

Double Throw A switch that alternately completes a circuit at either end of its extreme positions.

Double Pole/Single Throw D.P.S.T. – A switch that has four terminals and is used to connect or disconnect two pairs of terminals simultaneously.

Double Pole/Double Throw D.P.S.T. – A switch that has six terminals and is used to connect one pair of terminals to either of the other two pairs.

Inductive Load Initial amps needed to engage a circuit and/or load which allows a momentary flow of current when a circuit is open. (Devices that create inductive loads are typically motor coils and solenoids.)

Lamp Load Light bulb current expressed in amps at a rated voltage.

Momentary Momentary action is obtained by holding switch in position with pressure. Upon release the switch returns to the previous position.

Reversing Reversing action is obtained by reversing the polarity of a switch with jumper wires or blades to change the rotation of a motor. Typical applications are winches, plows, radio antennas and fuel selector valves.

Single Pole A switch that opens, closes, or changes connection in a single conductor of an electrical circuit to a common contact.

Single Throw A switch that opens, closes, or completes a circuit at only one of the extreme positions of its actuator.

Single Pole/Single Throw S.P.S.T. - A two terminal switch which opens or closes one circuit.

Single Pole/Double Throw S.P.D.T. - A three terminal switch for connecting one terminal to either of two other terminal.

Volt The unit that measures the potential difference in electrical force or “pressure” between two points on a circuit.

Watt The unit of power that indicates the rate at which a device converts electric current to another form of energy, either heat or motion.

Service Tip

- Replacement switch must have same or higher rating as original switch.
- Unplug circuit or turn off power at electrical panel.
- Remove wires from old switch one-at-a-time and attach to new switch in same manner, or follow wiring diagram.
- For Screw Terminals - Twist stranded wire together. Loop wire clockwise around screw. Tighten securely.
- For Blade Terminals - Use Female push-on terminals. Crimp tightly on stranded wire. Make sure you have a snug fit.
- Turn on power.