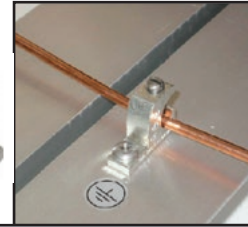


## COPPER LAY IN LUGS

- Made from high strength copper alloy
- Acceptable for direct burial earth or concrete.
- Use with copper conductor only.
- Lay in feature
- cULus 467 listed.

**\*\*Great For Solar Panel Grounding\*\***



PART NO	CONDUCTOR RANGE		SPECIFICATIONS
	MIN	MAX	
<b>CL50DB</b>	14 AWG	4 AWG	Unplated With Stainless Steel Screw
<b>CL50DBTN</b>	14 AWG	4 AWG	Tin Plated With Stainless Steel Screw

## ALUMINIUM LAY IN LUGS

- Made from high strength extruded aluminium alloy.
- Electra tin plated.
- Provides low contact resistance.
- Suitable for use with copper or aluminum conductors for grounding & continuous loop application
- cULus 467 Listed.



PART NO	CONDUCTOR RANGE	
	MAX	MIN
<b>LI50S</b>	14 AWG	4 AWG
<b>LI112S</b>	1/0 AWG	14 AWG
<b>LI200S</b>	3/0 AWG	6 AWG
<b>LI252S</b>	250 MCM	6 AWG

- Made from high strength extruded aluminium alloy.
- Tin Plated with Stainless Steel Screw
- Provides low contact resistance.
- Suitable for use with copper or aluminum conductors for grounding & continuous loop application
- cULus 467 Listed.

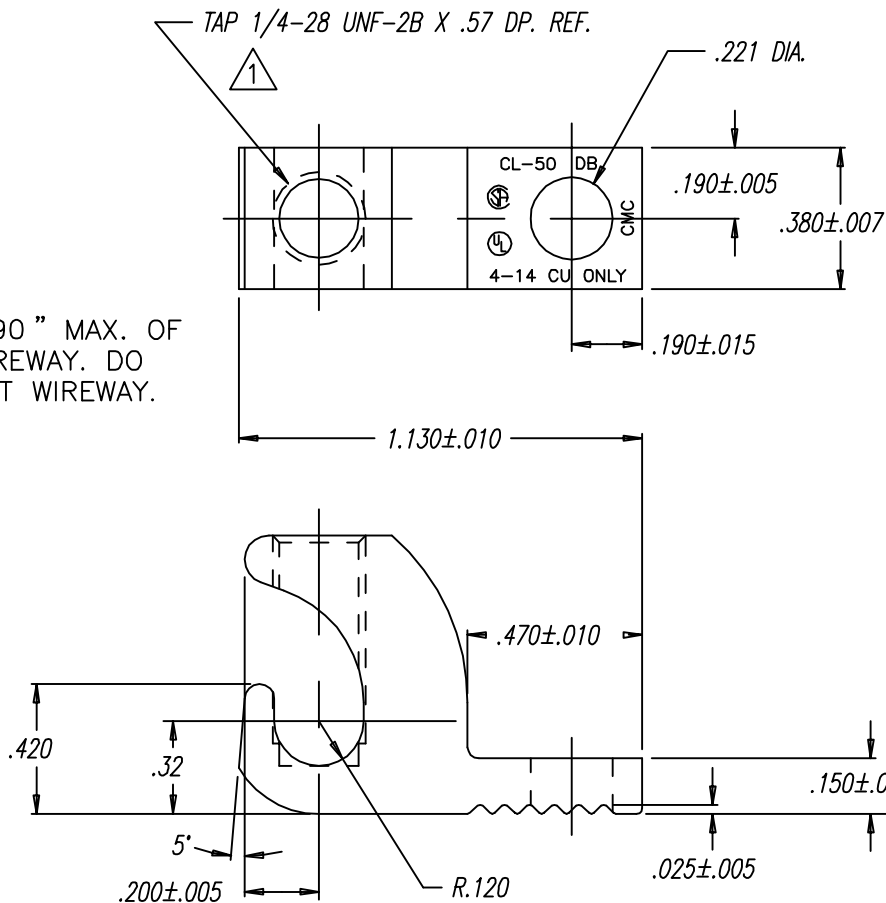


PART NO	CONDUCTOR RANGE	
	MAX	MIN
<b>LI50SS</b>	14 AWG	4 AWG

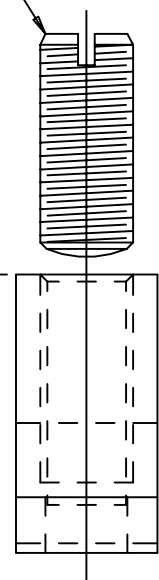
Test conductor size installed in connector	Tightening torque, N·m (lbf·in)								
	Slotted head No. 10 and larger <sup>a</sup>				Hexagonal head – external drive socket wrench				
	Slot width – 1.2 mm (0.047 in) or less and slot length – 6.4 mm (1/4 in) or less		Slot width – over 1.2 mm (0.047 in) or slot length – over 6.4 mm (1/4 in)		Split-bolt connectors		Other connectors		
					A	B	A	B	
AWG or kcmil	(mm <sup>2</sup> )	A	B	A	B	A	B		
30 – 10	(0.05 – 5.3)	1.7 (15)	2.3 (20)	2.8 (25)	4.0 (35)	7.3 (65)	9.0 (80)	6.8 (60)	8.5 (75)
8	(8.4)	2.3 (20)	2.8 (25)	3.4 (30)	4.5 (40)	7.3 (65)	9.0 (80)	6.8 (60)	8.5 (75)
6 – 4	(13.2 – 21.2)	2.8 (25)	4.0 (35)	4.0 (35)	5.1 (45)	15.3 (135)	18.6 (165)	10.2 (90)	12.4 (110)
3	(26.7)	2.8 (25)	4.0 (35)	4.5 (40)	5.6 (50)	25.4 (225)	31.1 (275)	14.1 (125)	16.9 (150)
2	(33.6)	3.4 (30)	4.5 (40)	4.5 (40)	5.6 (50)	25.4 (225)	31.1 (275)	14.1 (125)	16.9 (150)
1	(42.4)	–	–	4.5 (40)	5.6 (50)	25.4 (225)	31.1 (275)	14.1 (125)	16.9 (150)
1/0 – 2/0	(53.5 – 67.4)	–	–	4.5 (40)	5.6 (50)	35.6 (315)	43.5 (385)	16.9 (150)	20.3 (180)
3/0 – 4/0	(85.0 – 107.2)	–	–	4.5 (40)	5.6 (50)	45.2 (400)	56.5 (500)	22.6 (200)	28.2 (250)
250 – 350	(127 – 177)	–	–	4.5 (40)	5.6 (50)	62.1 (550)	73.4 (650)	28.2 (250)	36.7 (325)
400	(203)	–	–	4.5 (40)	5.6 (50)	76.3 (675)	93.2 (825)	28.2 (250)	36.7 (325)

A B C D E F G H I J

ASM. NO. C00497289  
 PART NO. C00209289



1/4-28 x .62 LG. SLOTTED  
 18-8 STAINLESS STEEL SCREW,  
 C00201027, ASSEMBLE SCREW  
 SNUG TO BOTTOM



NOTES:  
 1. SERRATIONS OPTIONAL

FINISH: TIN PLATE CMS-02

1 TAP WITHIN .090" MAX. OF  
 BOTTOM OF WIREWAY. DO  
 NOT DRILL PAST WIREWAY.

					UNLESS OTHERWISE SPECIFIED	DRAWN BY SES 4/16/04	NAME OF PART LAY-IN ASSEMBLY	CAT. NO. CL50-DB
8	B	ADDED CMC TO THE MARKING	12665	12/16/09	AML		MATERIAL C13602001 CDA-147 COPPER	SCALE 2-1
	A	ADDED NOTE: SERRATIONS OPTIONAL		4-07	JKO			
	REV.	DESCRIPTION	ECN	DATE	INIT.	CROSS REFERENCE # -		

CLASS A DOCUMENT

THIS INFORMATION IS PROPRIETARY TO CONNECTOR MFG. CO. AND IS NOT TO BE DISCLOSED OUTSIDE OF CONNECTOR MFG. CO. WITHOUT A CONFIDENTIALITY AGREEMENT

CONNECTOR MFG. CO. HAMILTON, OHIO