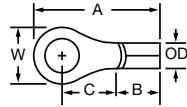


TYPE 9 HIGH TEMPERATURE TERMINALS



One piece, steel construction, nickel plated for protection. Capable of providing reliable circuitry in temperature ranges up to 900 degrees Fahrenheit. Structural features of all Type 9 terminals are identical to the Type 1, which proves that they will provide the highest quality connection.

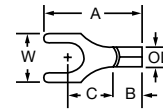
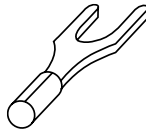
RING TERMINALS

BUTTED SEAM

Rated at 600V

Part #	Copper Cond. Range	Stud Size	Thickness (in)	Approx. Dimen. in Inches				
				A	W	C	B	OD
R9A6S	22-18	6	0.028	0.66	0.290	0.260	0.25	0.133
R9A8	22-18	8	0.028	0.66	0.324	0.250	0.25	0.133
R9A10	22-18	10	0.028	0.66	0.324	0.250	0.25	0.133
R9A14S	22-18	1/4	0.028	0.89	0.470	0.405	0.25	0.133
R9B6S	16-14	6	0.030	0.66	0.295	0.260	0.25	0.152
R9B8	16-14	8	0.030	0.71	0.324	0.295	0.25	0.152
R9B10	16-14	10	0.030	0.71	0.340	0.295	0.25	0.152
R9B14S	16-14	1/4	0.030	0.89	0.470	0.405	0.25	0.152
R9C6S	12-10	6	0.038	0.72	0.342	0.297	0.25	0.217
R9C8	12-10	8	0.038	0.72	0.342	0.297	0.25	0.217
R9C10	12-10	10	0.038	0.72	0.342	0.297	0.25	0.217
R9C14S	12-10	1/4	0.038	0.99	0.558	0.469	0.25	0.217
R9C56	12-10	5/16	0.038	0.99	0.558	0.469	0.25	0.217
R9C38	12-10	3/8	0.038	0.99	0.558	0.469	0.25	0.217
R9D10	8	10	0.042	0.93	0.472	0.358	0.33	0.268
R9D14	8	1/4	0.042	0.93	0.472	0.358	0.33	0.268

For use with Copper Solid and Stranded Wire Only



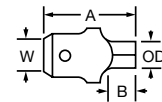
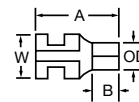
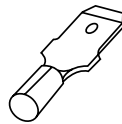
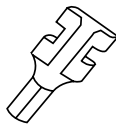
SPADE TERMINALS

BUTTED SEAM

Rated at 600V

S9A10	22-18	10	0.028	0.73	0.312	0.321	0.25	0.07
S9B10	16-14	10	0.030	0.73	0.344	0.303	0.25	0.09
S9C10	12-10	10	0.038	0.72	0.35	0.294	0.25	0.13

For use with Copper Solid and Stranded Wire Only



MALE AND FEMALE DISCONNECTS

BUTTED SEAM

Rated at 600V

Part #	Copper Cond. Range	Stock Size (in)	A	W	B	OD
FR9A250	22-18	.032 x .250	0.675	0.30	0.25	0.110
FR9B250	16-14	.032 x .250	0.650	0.30	0.25	0.133
MT9B250	16-14	.032 x .250	0.690	0.25	0.25	0.152
FR9C250	12-10	.032 x .250	0.660	0.30	0.25	0.175

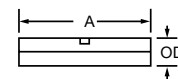
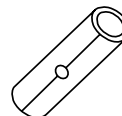
For use with Copper Stranded Wire Only

BUTT CONNECTORS

BUTTED SEAM

Rated at 600V

Part #	Copper Cond. Range	A	OD
B9A	22-18	0.560	0.133
B9B	16-14	0.560	0.152
B9C	12-10	0.625	0.212

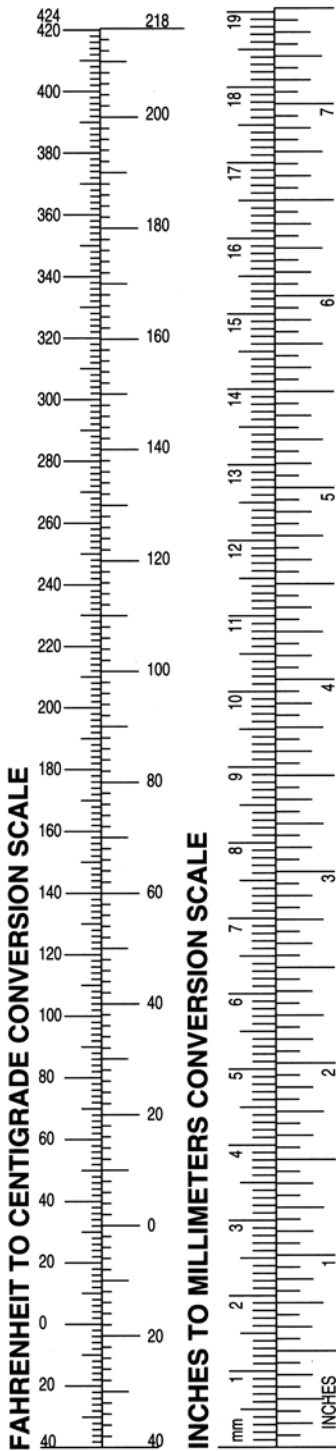


For use with Copper Solid and Stranded Wire Only

Add Suffix "M" for 1000 pack
Standard Pack - 100 pack

Installing Tools (22-10AWG): RAT-NINS, HTS1000, 453, RHT-1992

CONVERSION TABLES



Wire gauge conversion to decimal equivalents

INCH FRAC.	INCH DEC.	MILLI-METERS	INCH FRAC.	INCH DEC.	MILLI-METERS
1/64	.0156	0,397	33/64	.5156	13,097
1/32	.0312	0,794	17/32	.5312	13,494
3/64	.0468	1,191	35/64	.5468	13,891
1/16	.0625	1,588	9/16	.5625	14,288
5/64	.0781	1,984	37/64	.5781	14,684
3/32	.0937	2,381	19/32	.5937	15,081
7/64	.1093	2,778	39/64	.6093	15,478
1/8	.1250	3,175	5/8	.6250	15,875
9/64	.1406	3,572	41/64	.6406	16,272
5/32	.1562	3,969	21/32	.6562	16,669
11/64	.1718	4,366	43/64	.6718	17,066
3/16	.1875	4,763	11/16	.6875	17,463
13/64	.2031	5,159	45/64	.7031	17,859
7/32	.2187	5,556	23/32	.7187	18,256
15/64	.2343	5,954	47/64	.7343	18,653
1/4	.2500	6,350	3/4	.7500	19,050
17/64	.2656	6,747	49/64	.7656	19,447
9/32	.2812	7,144	25/32	.7812	19,844
19/64	.2968	7,541	51/64	.7968	20,241
5/16	.3125	7,938	13/16	.8125	20,638
21/64	.3281	8,334	53/64	.8281	21,034
11/32	.3437	8,731	27/32	.8437	21,431
26/64	.3593	9,128	55/64	.8593	21,828
3/8	.3750	9,525	7/8	.8750	22,225
25/64	.3906	9,922	57/64	.8906	22,622
13/32	.4062	10,319	29/32	.9062	23,019
27/64	.4218	10,716	59/64	.9218	23,416
7/16	.4375	11,113	15/16	.9375	23,813
29/64	.4531	11,509	64/64	.9531	24,209
15/32	.4687	11,906	31/32	.9687	24,606
31/64	.4843	12,303	63/64	.9843	25,003
1/2	.5000	12,700	1	1.0000	25,400

Move decimal point three places to the right to read mills.

DIAMETER			DIAMETER		
AWG	INCHES	CMA	AWG	INCHES	CMA
4/0	.460	212,000	12	.081	6,530
3/0	.410	168,000	13	.072	5,180
2/0	.365	133,000	14	.064	4,110
1/0	.325	106,000	15	.057	3,260
1	.289	83,700	16	.051	2,580
2	.258	66,400	17	.045	2,050
3	.229	52,600	18	.040	1,620
4	.204	41,700	19	.036	1,290
5	.182	33,100	20	.032	1,020
6	.162	26,300	21	.0285	810
7	.144	20,800	22	.0253	642
8	.128	16,500	23	.0226	509
9	.114	13,100	24	.0201	404
10	.102	10,400	25	.0179	320

AWG	mm ²	Standard wires mm ²			
26-22	0,1-0,4	0,14	0,20	0,25	0,35
22-16	0,25-1,6	0,25	0,35	0,50	0,75 1,0 1,5
16-14	1,0-2,6	1,0	1,5	2,5	
12-10	2,7-6,6	4,0	6,0		
8	6,6-10,5	10			
6	10,5-16,8	16			
4	16,8-26,6	2,5			
2	26,6-42,4	35			
1/0	42,4-60,5	50			
2/0	60,5-76,2	70			
3/0	76,2-96,3	95			
4/0	96,3-117,0	120			

Hole diameter #10 and 3/8" are available in metric ref.

#10 .190 .209 (5,31) M5
3/8" .375 .413 (10,5) M9-10

* All decimals plus or minus .003"
Fractions plus or minus .055".

Stud size with hole sizes.

STANDARD STUD SIZE	SCREW DIA. (")	ETC HOLE DIA. INCH/mm	DIN.
● #0	.060	.094 (2,39)	M1,7-2,2
● #1	.073		
● #2	.086		
● #3	.099	.120 (3,025)	M2,6
● #4	.112		
● #5	.125	.146 (3,71)	M3-3,5
● #6	.138		
● #8	.164		
● #10	.190	.198 (5,03)	
● #12	.216	17/64 (6,75)	M6
● #14	.242		
● 1/4"	.250		
● 5/16"	.312	21/64 (8,33)	M8
● 3/8"	.375	25/64 (9,92)	M9
● 7/16"	.437	29/64 (11,51)	M11
● 1/2"	.500	33/64 (13,10)	M12
● 5/8"	.625	21/32 (16,67)	M16
● 3/4"	.750	25/32 (19,84)	M18
● 7/8"	.875	29/32 (23,02)	M20
● 1"	1.000	1-1/32 (26,19)	M25