







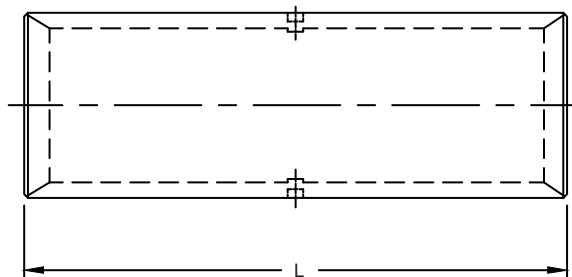


**COPPER COMPRESSION SPLICES**

**COPPER HEAVY DUTY STARTER SPLICES**

DIMENSION IN INCHES				
PART NO.	CONDUCTOR		MARKING INFORMATION	
	GAUGE (Awg)	LENGTH		
	8	1.181	8 M-K-RED	
762380*	6	1.377	6 K-K-BU	
762381*	4	1.574	4 J-H-GREY	
762382*	1-2	1.968	1-2 H-H-PINK	
762383*	1/0	1.968	1/0 E-A-BLK	
762384*	2/0	2.165	2/0 A-C-ORG	
762385*	3/0	3.362	3/0 A-B-PUR	
762386*	4/0	2.559	4/0 A-A-YEL	

(\*) Marked is not UL Listed.



\*See table for dimension.

- Made of pure electrolytic copper for superior conductivity
- Contains over twice the copper weight as regular lugs
- Tin Plated for maximum corrosion prevention (Excellent for marine applications and longer life)
- Universal color coding makes matching crimping dies easier
- Closed-type
- Crimpable/Solderable