

- Used with locknut to terminate steel or aluminum flexible metal conduit and armored cable to enclosure.
- Assembled with die cast locknut and tri-combo screws.
- For additional listings refer to the metal clad cable and non-metallic cable sections.
- Die cast from high strength zinc alloy.



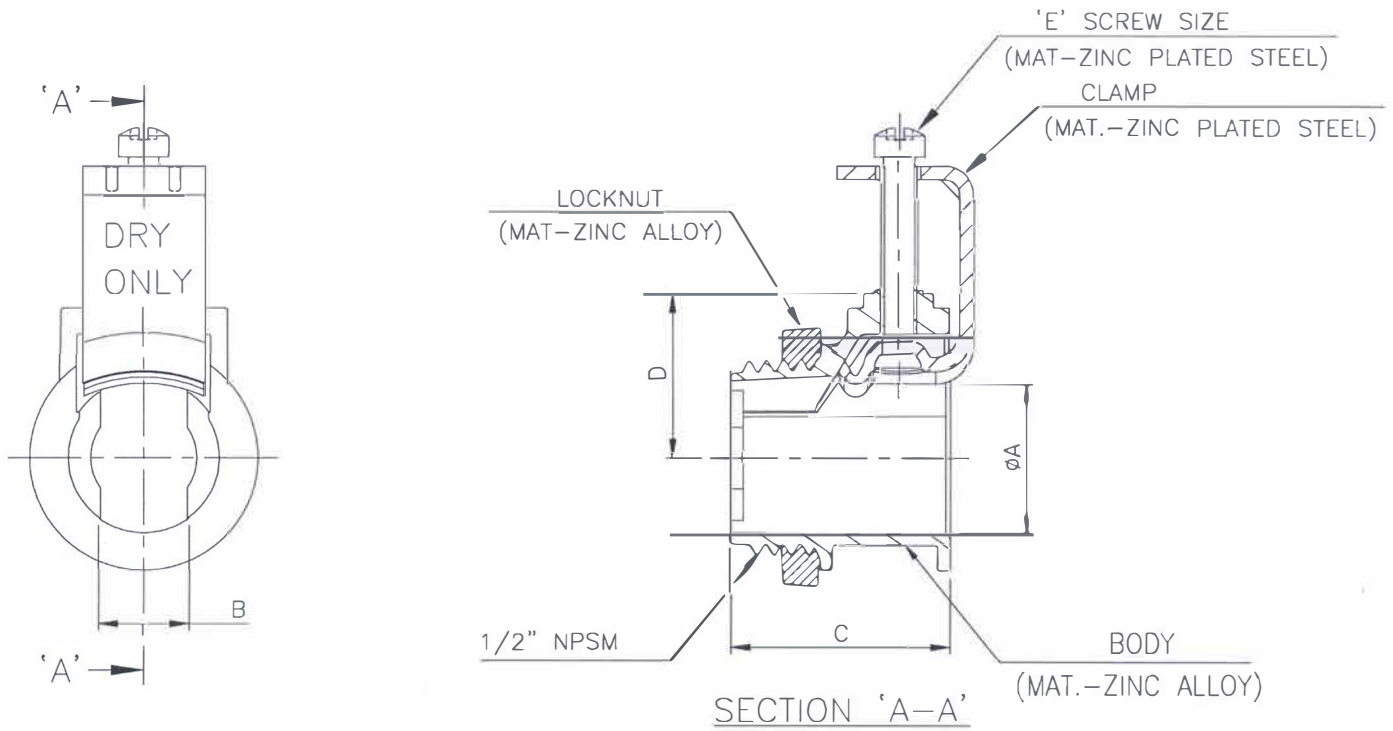
Technical Data

Part Number	Trade Size	Shipping Qty. - Bulk	Shipping Wt. (lbs)	Min. Cable Size	Max. Cable Size
K-SAD-037 *	3/8"				

* 3/8" size fits 1/2" knockout

Certifications


UL File No. E155411
 CSA File No. LR57925



SR.NO.	PART No.	' ϕ A'	'B'	'C'	'D'	'E' SCREW SIZE & LENGTH
1	K-SAD-037	0.64	0.35	0.90	0.67	No.10 x 0.90" L

NOTES:

- CERTIFICATION/LISTING 
- UL FILE NO. E155411, VOL.4, SECTION.1

01	FORMAT UPDATED	-	-	ASS	PNN	URP	19-NOIV-13
00	NEW RELEASED	-	-	VSH	PNN	URP	04-JAN-13
REV.	ALTERATION	ZONE	ECRN/PER NO.	DRN.	CHD.	APPD.	DATE
GENERAL TOLERANCE		PROCESS: DIE CASTING			PROJECTIONS		
± 0.031		FINISH: NA					
		MATERIAL: ZINC ALLOY		SCALE : N.T.S		SHEET NO.: 1 OF 1	
		TITLE: 3/8" SADDLE CONNECTOR					
		PATH:					
		DRG NO. SAD037_CRD					

IF IN DOUBT, ASK

ALL DIMENSIONS ARE IN MM, UNLESS OTHERWISE SPECIFIED.