



Field Wireable & Bulkhead Connectors



IP 68 rated connectors for 8-to-18 AWG cable range



Specifications			
Connector Housing	Bulkhead Housing	Crimp Contacts	Cable
 <ul style="list-style-type: none"> • Matl: Polycarbonate • IP65-68 when mated • UV Resistant • Keyed Housings • Suitable for multiple mating cycles • No special tools needed for assembly • Safety Locking Clip meets NEC 2008 requirements • Intermateable with Type 4 connectors • High mechanical strength & weather resistance • Ease of assembly 	 <ul style="list-style-type: none"> • Matl: Polycarbonate • IP65-68 when mated • UV Resistant • Keyed Housings • Suitable for multiple mating cycles • No special tools needed for assembly • Safety Locking Clip meets NEC 2008 requirements • Intermateable with Type 4 connectors • High mechanical strength & weather resistance • Ease of assembly 	 <ul style="list-style-type: none"> • Solid machined contacts • Copper Alloy – Silver Plated • High current carrying capacity – up to 40 amps • Contacts can be reinserted 	 <ul style="list-style-type: none"> • 8 AWG thru 18 AWG tinned coated compressed copper, 19 strands. Class C stranding per ASTM B33 and B8 • Class B stranding per ASTM B33 and B8 • Flame-retardant Cross-Linked Polyethylene (XLPE), black • UL 4703 Type PV • National Electrical Code (NEC) • ICEA S-95-658/NEMA WC70 • UL 44 Type RHH or RHW-2, UL File # E90494 • UL 854 Type USE-2, UL File # E90499

Ordering Information						
Cable Gauge	Connector Housing	Cable Diameter Range	Bulkhead Housing	Crimp Contacts	Cable	Cable Length
Female						
8 AWG	HFH7-8	.275 - .315	FBH	HFC10	HLC8-1	500 ft.
					HLC8-2	1000 ft.
10 AWG	HFH5-7	.197 - .275	FBH	HFC6.0	HLC10-1	500 ft.
					HLC10-2	1000 ft.
12 AWG	HFH5-7	.197 - .275	FBH	HFC4.0	HLC12-1	500 ft.
					HLC12-2	1000 ft.
14 AWG	HFH4-5	.157 - .197	FBH	HFC2.5	HLC14-1	500 ft.
					HLC14-2	1000 ft.
16 AWG	HFH4-5	.157 - .197	FBH	HFC1.5	HLC16-1	500 ft.
					HLC16-2	1000 ft.
Male						
8 AWG	HMH7-8	.275 - .315	MBH	HMC10	HLC8-1	500 ft.
					HLC8-2	1000 ft.
10 AWG	HMH5-7	.197 - .275	MBH	HMC6.0	HLC10-1	500 ft.
					HLC10-2	1000 ft.
12 AWG	HMH5-7	.197 - .275	MBH	HMC4.0	HLC12-1	500 ft.
					HLC12-2	1000 ft.
14 AWG	HMH4-5	.157 - .197	MBH	HMC2.5	HLC14-1	500 ft.
					HLC14-2	1000 ft.
16 AWG	HMH4-5	.157 - .197	MBH	HMC1.5	HLC16-1	500 ft.
					HLC16-2	1000 ft.

Note: Consult factory for longer lengths of cable

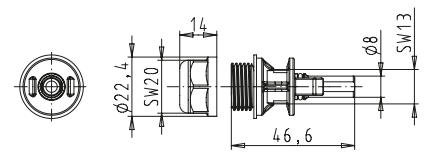
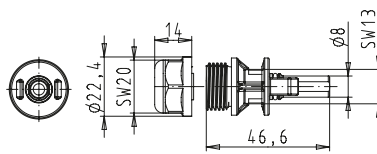
Accessories			
	Cover Piece	Tethered Cover Piece	Locking Clip
			
Female	HCF1	HCF2	HLC
Male	HCM1	HCM2	HLC

Connector housing parts Outer cable diameters of 4.0 – 10.5 mm

Field-assembled connectors and device connectors

Crimp technology
Contacts ordered separately
See the matrix on page 12 for possible combinations

Assembly with customary flat wrench
SW13 for housing and
SW20 for gland



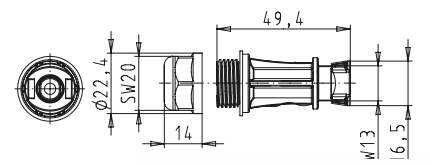
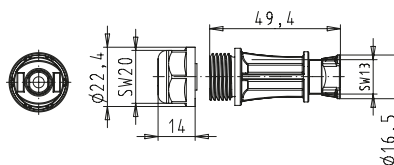
Approval	Outer cable diameter in mm	Color	Part No.	Std. Pack	Part No.	Std. Pack
			Field-assembled connector		Device connector	
			Cable gland	pre-assembled		
TÜV TUV certificate according to DIN V VDE V 0126-3/12.06 (EN 50521 being prepared)	4 – 5	black	96.111.0153.1	100		
	5 – 7	black	96.111.0053.1	100		
	7 – 8	black	96.111.0253.1	100		
	8 – 10.5	black	96.111.0353.1	(on request) 100	96.111.1053.1	100
ETL certificate through Intertek according to - UL 486A-486B/486D - CAN/CSA-C22.2 No. 65-03/ No. 198.2-05 UL approval being prepared	4 – 5	black	Y6.111.0153.1	100		
	5 – 7	black	Y6.111.0053.1	100		
	7 – 8	black	Y6.111.0253.1	100		
	8 – 10.5	black	Y6.111.0353.1	(on request) 100	Y6.111.1053.1	100

Male Connector

Field-assembled connectors and device connectors

Crimp technology
Contacts ordered separately
See the matrix on page 12 for possible combinations

Assembly with customary flat wrench
SW13 for housing and
SW20 for gland



Approval	Outer cable diameter in mm	Color	Part No.	Std. Pack	Part No.	Std. Pack
			Field-assembled connector		Device connector	
			Cable gland	pre-assembled		
TÜV TUV certificate according to DIN V VDE V 0126-3/12.06 (EN 50521 being prepared)	4 – 5	black	96.112.0153.1	100		
	5 – 7	black	96.112.0053.1	100		
	7 – 8	black	96.112.0253.1	100		
	8 – 10.5	black	96.112.0353.1	(on request) 100	96.112.1053.1	100
ETL certificate through Intertek according to - UL 486A-486B/486D - CAN/CSA-C22.2 No. 65-03/ No. 198.2-05 UL approval being prepared	4 – 5	black	Y6.112.0153.1	100		
	5 – 7	black	Y6.112.0053.1	100		
	7 – 8	black	Y6.112.0253.1	100		
	8 – 10.5	black	Y6.112.0353.1	(on request) 100	Y6.112.1053.1	100

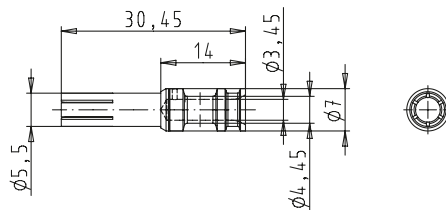
Contact parts for 2.5 – 10 mm² cable cross sections

Female Connector

Crimp technology

Standard pack is delivered in a plastic bag. Delivery in complete standard packs only.

Only use Wieland crimp tool!



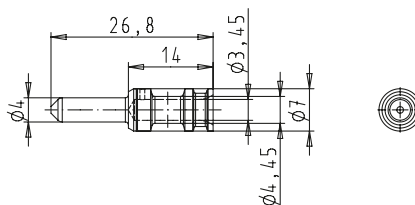
Marking	Cable cross section in mm ²	AWG	Part No.	Std. Pack
			Contact part	
			Insul. strip length	17 + 1 mm
2 grooves	2.5	14	02.125.8102.8	100
unmarked	4.0	12	02.125.8202.8	100
1 groove	6.0	10	02.125.8302.8	100
unmarked	10.0	8	02.125.8402.8	100

Female Connector

Crimp technology

Standard pack is delivered in a plastic bag. Delivery in complete standard packs only.

Only use Wieland crimp tool!



Marking	Cable cross section in mm ²	AWG	Part No.	Std. Pack
			Contact part	
			Insul. strip length	17 + 1 mm
2 grooves	2.5	14	05.545.2102.8	100
unmarked	4.0	12	05.545.2202.8	100
1 groove	6.0	10	05.545.2302.8	100
unmarked	10.0	8	05.545.2402.8	100



Assembly & Installation Tools and Kits

Accessories & tools for field installation or assembly

Ordering Information

Crimp Tool	Crimp Tool	Wire Stripper	Removal Tool	Tool Kit
				
For 1.5, 2.5, 4mm ² die sets. Includes contact positioner. Protective Carrying Case	For 4, 6, 10mm ² die sets. Includes contact positioner. Protective Carrying Case	For 10 – 24 AWG cable. Trigger style design. Includes wire stop	Contact removal tool. Removes contacts from housing without damage	Complete tool kit includes basic crimp tool, 2 die sets 1.5-4mm ² & 4 - 10mm ² , crimp contact positioner and removal tool
HA5	HA6	669970	HRT-1	HA3



Thin-Film Junction Box & Combiner Box

IP 67 rated with plug-and-play design



Thin-Film Junction Box & Combiner Box Available Upon Request – Consult Factory

- Thin-Film Junction Box:
 - Pre-assembled with cables and connectors
 - Available with or without bypass diodes
 - IP 67 rated
- Combiner Box:
 - Combine from 8 to 30 PV strings
 - Plug-and-play design
 - Operation and protection to 1000 V
 - Customizable with a wide range of optional products

