

CNE - CSE 16 poles + ⊕ 16A - 500V

enclosures: size "77.27"

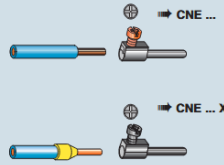
inserts, screw terminal connections

- characteristics according to EN 61984: **16A 500V 6kV 3**
- UL, CSA, CCC, GL certified

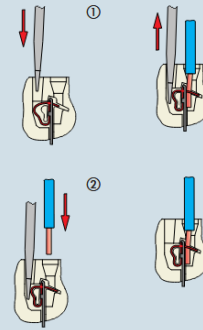


description	part No.
indirect, with plate 1) female inserts with female contacts male inserts with male contacts	CNEF 16 T CNEM 16 T
direct, without plate 2) female inserts with female contacts male inserts with male contacts	CNEF 16 TX CNEM 16 TX
indirect, with plate 1), use in up to 180 °C female inserts with female contacts, brown male inserts with male contacts, brown	CNEF 16 RYT * CNEM 16 RYT *
spring terminal female inserts with female contacts male inserts with male contacts	

- 1) for non-prepared conductors
 - 2) for bush terminal conductors
- * CNE...RY version without plastic wire insertion guide cover available on request.

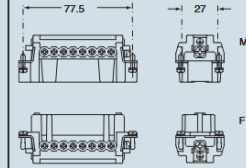


connection with spring terminal

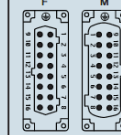


dimensions shown are not binding and may be changed without notice

dimensions in mm



contacts side (front view)



- inserts with plate, for section conductors: 0.5 - 2.5 mm² - AWG 20 - 14
- inserts without plate, for section conductors: 0.25 - 2.5 mm² - AWG 24 - 14

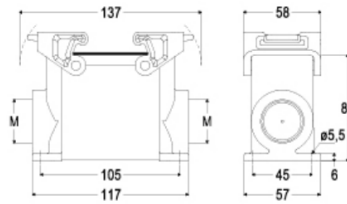
Part number
TMAP 16.32



Surface mounting housing, T-TYPE series, with 2 levers, M32 cable entry, size "77.27"

Part number
TMAP 16.32

Catalogue drawings



Product description	Material properties
Product type Surface mounting housing	Main material Polypropylene (PP)
Series T-TYPE	Lever: Polyamide (PA)
Closing type With 2 levers	Gasket: polyurethane (PUR)
Size Size 77.27	Colour RAL 7012 grey, RAL 7001 grey
Cable entry With cable entry M32	RoHS conformity Compliant
Technical data	China RoHS - EFUP E
IP degree of protection IP65	REACH SVHC substances No
Further technical details	Approvals / Standards
Weight 207,00 g	UL EC872
Operating temperature -40°C ... +90°C	cUL EC878
	General ordering information



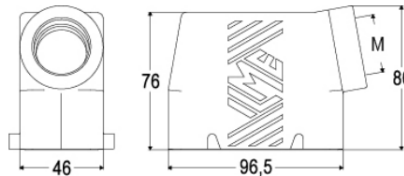
Part number
TMAO 16.32



Hood, T-TYPE series, with 4 pegs, M32 side cable entry, size "77.27"

Part number
TMAO 16.32

Catalogue drawings



Product description	Material properties
Product type Hood	Main material Polypropylene (PP)
Series T-TYPE	Colour RAL 7012 grey
Closing type With 4 pegs	RoHS conformity Compliant
Size Size 77.27	China RoHS - EFUP E
Cable entry Side cable entry M32	REACH SVHC substances No
Technical data	Approvals / Standards
IP degree of protection IP65	UL EC872
Further technical details	cUL EC878
Weight 130,00 g	General ordering information
Operating temperature range (min, max) 40°C ... +90°C	EAN13 code 8015747180594
	cUL class 5.1 27440202
	ETIM 7.0 EC000437

