

CNE - CSE 16 poles + ⊕ 16A - 500V

enclosures: size "77.27"

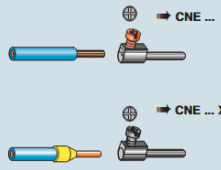
inserts,
screw terminal connections

- characteristics according to EN 61984:
16A 500V 6kV 3
- UL, CSA, CCC, GL certified

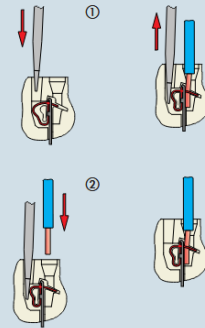


description	part No.
indirect, with plate 1) female inserts with female contacts male inserts with male contacts	CNEF 16 T CNEM 16 T
direct, without plate 2) female inserts with female contacts male inserts with male contacts	CNEF 16 TX CNEM 16 TX
indirect, with plate 1), use in up to 180 °C female inserts with female contacts, brown male inserts with male contacts, brown	CNEF 16 RYT * CNEM 16 RYT *
spring terminal female inserts with female contacts male inserts with male contacts	

- 1) for non-prepared conductors
 - 2) for bush terminal conductors
- * CNE...RY version without plastic wire insertion guide cover available on request.

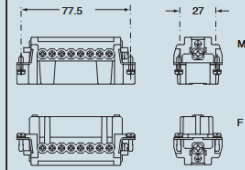


connection with spring terminal

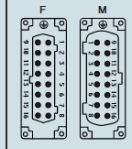


dimensions shown are not binding and may be changed without notice

dimensions in mm

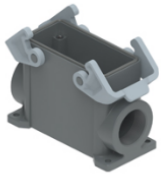


contacts side (front view)



- inserts with plate, for section conductors: 0.5 - 2.5 mm² - AWG 20 - 14
- inserts without plate, for section conductors: 0.25 - 2.5 mm² - AWG 24 - 14

Part number
TMAP 16.32

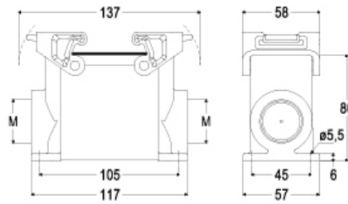


Surface mounting housing, T-TYPE series, with 2 levers, M32 cable entry, size "77.27"

Part number
TMAP 16.32



Catalogue drawings



Product description	
Product type	Surface mounting housing
Series	T-TYPE
Closing type	With 2 levers
Size	Size 77.27
Cable entry	With cable entry M32
Technical data	
IP degree of protection	IP65
Further technical details	
Weight	207,00 g
Operating temperature	-40°C ... +90°C

Material properties	
Main material	Polypropylene (PP)
Other materials	Lever: Polyamide (PA) Gasket: polyurethane (PUR)
Colour	RAL 7012 grey, RAL 7001 grey
RoHS conformity	Compliant
China RoHS - EFUP	E
REACH SVHC substances	No
Approvals / Standards	
UL	ECBT2
cUL	ECBT8
General ordering information	

Part number
TMAO 16.40

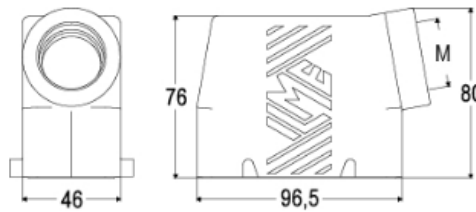


Hood, T-TYPE series, with 4 pegs, M40 side cable entry, size "77.27"

Part number
TMAO 16.40



Catalogue drawings



Product description	
Product type	Hood
Series	T-TYPE
Closing type	With 4 pegs
Size	Size 77.27
Cable entry	Side cable entry M40
Technical data	
IP degree of protection	IP65
Further technical details	
Weight	120,00 g
Operating temperature range (min, max)	-40°C ... +90°C

Material properties	
Main material	Polypropylene (PP)
Colour	RAL 7012 grey
RoHS conformity	Compliant
China RoHS - EFUP	E
REACH SVHC substances	No
Approvals / Standards	
UL	ECBT2
cUL	ECBT8
General ordering information	
EAN13 code	8015747168700
eCl@ss 8.1	27440202
ETIM 7.0	EC000437