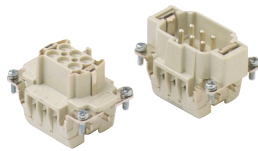




HEAVY DUTY MULTIPOLE CONNECTORS

Inserts

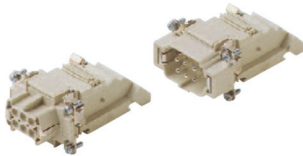


Series E 6 poles+ ⊕ 16A max-600V

Part #	Screw Terminal with wire protection
E06RS	female inserts
E06PS	male inserts

Part #	Cage Clamp
E06RG	female inserts
E06PG	male inserts

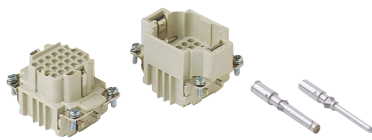
Wire conductor range: 22 ÷ 14 AWG



Series E-TB 6 poles+ ⊕ 16A max-600V

Part #	Terminal Block Inserts Screw Terminal Connection
E06RS-TBL	female inserts with female contacts (left mounting)
E06RS-TBR	female inserts with female contacts (right mounting)
E06PS-TBL	male inserts with male contacts (left mounting)
E06PS-TBR	male inserts with male contacts (right mounting)

Wire conductor range: 18 ÷ 14 AWG

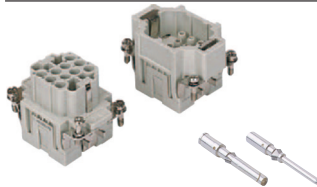


Series DD 24 poles+ ⊕ 10A max-600V

Part #	Crimp Terminal
DD24RC	female inserts
DD24PC	male inserts

Wire conductor range: 22 ÷ 14 AWG

10A Crimp Contacts must be ordered separately, see page B-28



Series EQ 10 poles+ ⊕ 16A max-600V

Part #	Inserts, Crimp Connections
EQ10RC	female inserts for female contacts
EQ10PC	male inserts for male contacts

Wire conductor range: 20 ÷ 12 AWG

16A Crimp Contacts must be ordered separately, see page B-28

Bases



Series E 6 poles+ ⊕

Part #	Panel Mounting Housings
EPML06S	single lever
EPML06SC	single lever with cover

EPMP06SC	two pegs with cover
----------	---------------------

Part #	Surface Mounting Housings	cable gland
ES1L06S4	single lever, single port	Pg 16
ES2L06S4	single lever, double port	Pg 16 x 2
ES1L06S5	single lever, single port, high construction	Pg 21
ES2L06S5	single lever, double port, high construction	Pg 21 x 2
ES1L06S6	single lever, single port, high construction	Pg 29
ES2L06S6	single lever, double port, high construction	Pg 29 x 2

ES1L06SC4	single lever and cover, single port	Pg 16
ES2L06SC4	single lever and cover, double port	Pg 16 x 2
ES1L06SC5	single lever and cover, single port, high construction	Pg 21
ES2L06SC5	single lever and cover, double port, high construction	Pg 21 x 2
ES1L06SC6	single lever and cover, single port, high construction	Pg 29
ES2L06SC6	single lever and cover, double port, high construction	Pg 29 x 2

To convert to "NPT", see page B-28

All inserts listed above fit into bases on page B-11 and hoods on page B-12

