



Tel: (450) 449-0412 ; 1-866-540-0412 Fax: (450)449-9115 ; 1-866-499-9115



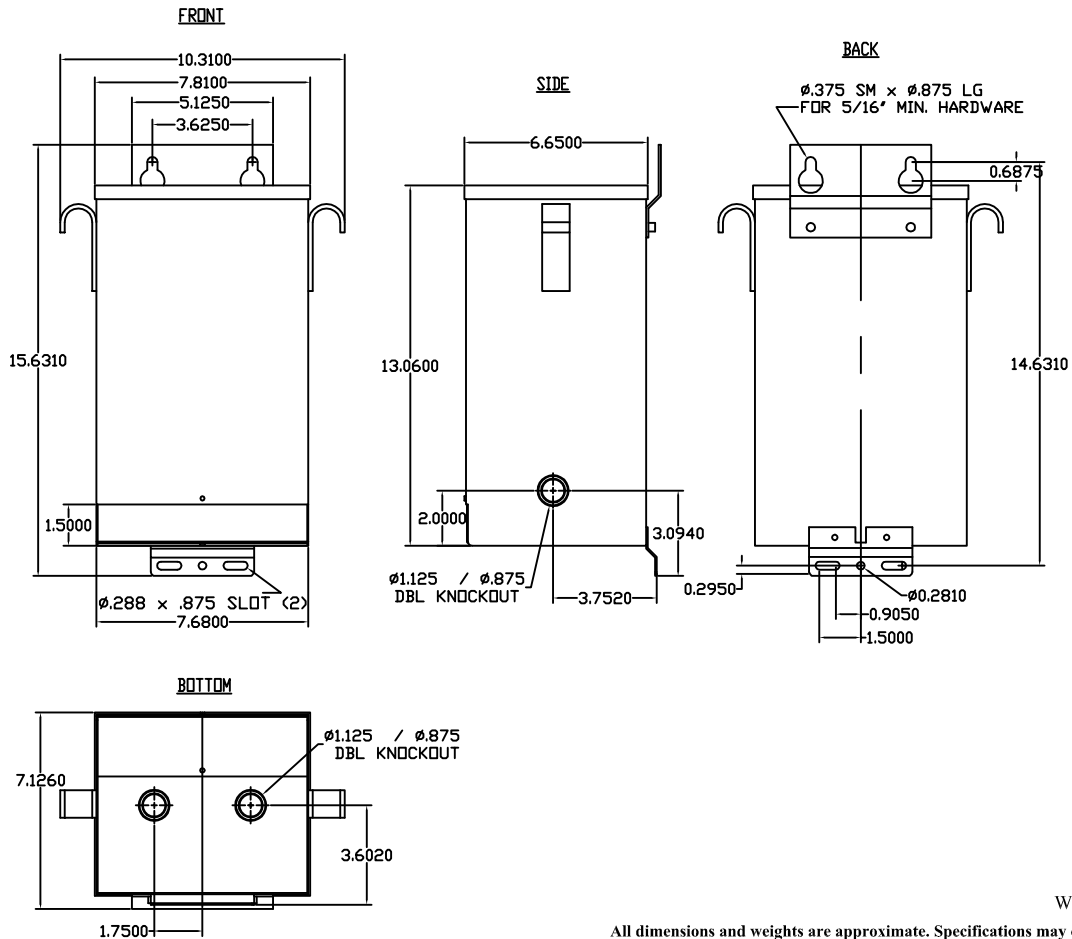
DX SERIES

5000 VA, PART # : DX 5000QHU

ELECTRICAL SPECIFICATIONS

PHASE:	1	PRIMARY VOLTAGE		SECONDARY VOLTAGE			
FREQ.:	60 Hz.	600	2, 2 ½ % ANFC, 2, 2 ½ % BNFC	120/240			
INSUL. CLASS	H(180°C)			PRIMARY VOLTS	CONNECT PRIMARY LINES TO	INTER-CONNECT	CONNECT SECONDARY LINES TO
TEMP. RISE	< 115°C			600	H1 - H4		
SECONDARY VOLT							
				120		X1 to X3 X2 to X4	X1 - X4
				240		X2 to X3	X1 - X4

MECHANICAL SPECIFICATIONS: (Dimensions = inches).



Weight : 34 Kg (75 lbs)

All dimensions and weights are approximate. Specifications may change without notice.

							MODEL NUMBER: DX 5000QHU		
ZONE	REV	REVISION	DESCRIPTION	DATE	APPROVAL	Drawn by:	SS	DWG NO. 71CUDX5000QHU-ENG	REV 00
DATE: JANUARY/24/2013								PAGE: 1 of 1	