



Tel: (450) 449-0412 ; 1-866-540-0412 Fax: (450)449-9115 ; 1-866-499-9115



DX SERIES

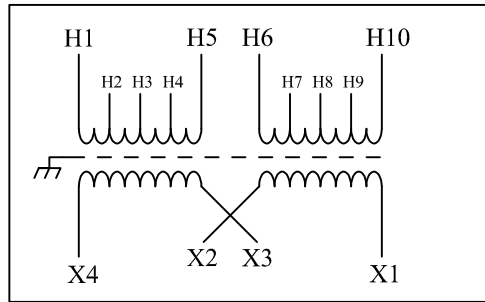
10000 VA, PART # : DX 10000PHU

ELECTRICAL SPECIFICATIONS

PHASE:	1
FREQ.:	60 Hz.
INSUL. CLASS	H(180°C)
TEMP. RISE	< 115°C

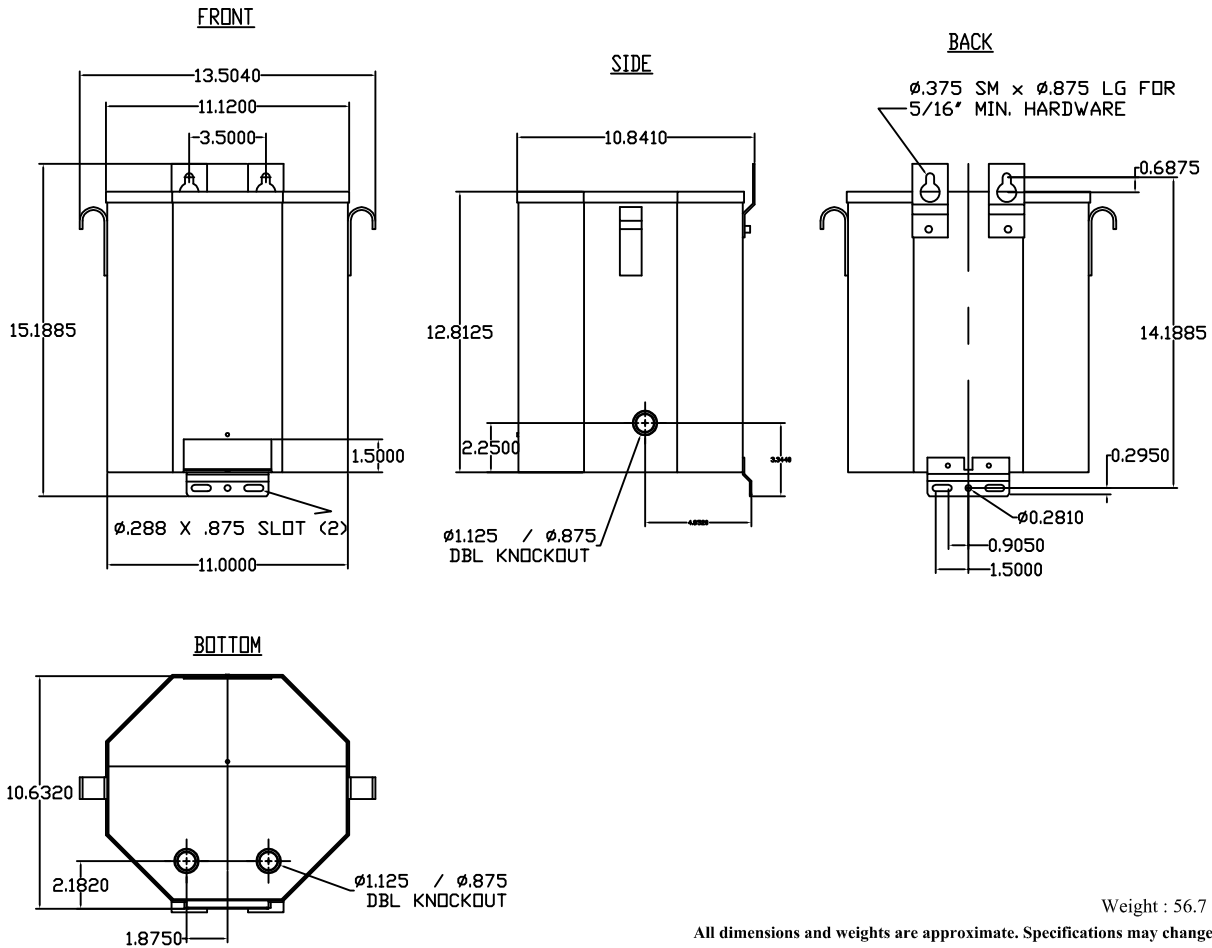
PRIMARY VOLTAGE	
240/480	2, 2 ½ % ANFC, 2, 2 ½ % BNFC

SECONDARY VOLTAGE
120/240



PRIMARY VOLTS	CONNECT PRIMARY LINES TO	INTER-CONNECT	CONNECT SECONDARY LINES TO
240	H1 - H10	H1 to H7 H10 to H4	
480	H1 - H10	H4 to H7	
SECONDARY VOLT			
120		X1 to X3 X2 to X4	X1 - X4
240		X2 to X3	X1 - X4

MECHANICAL SPECIFICATIONS: (Dimensions = inches).



Weight : 56.7 Kg (125 lbs)

All dimensions and weights are approximate. Specifications may change without notice.



MODEL NUMBER:
DX 10000PHU

ZONE	REV	REVISION	DESCRIPTION	DATE	APPROVAL
------	-----	----------	-------------	------	----------

Drawn by: SS

DWG NO. 71CUDX10000PHU-ENG

REV 00

DATE: JANUARY/24/2013

PAGE: 1 of 1