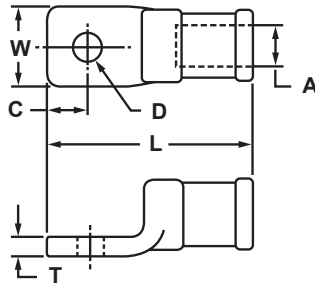


Heavy Duty One Hole Cast Copper Compression Lugs

Type TLU-S

- Provides excellent mechanical strength
- Cast out of pure copper alloy for high conductivity
- Entire connector is electro-tin plated for corrosion resistance
- Can be installed with existing hydraulic crimping tools



CATALOG NUMBER	A CONDUCTOR SIZE	D BOLT SIZE	APPROXIMATE DIMENSIONS (IN.)				T & B DIE INDEX NO.
			L	W	T	C	
TLUW8S	8 Str.	#10	1.44	.50	.13	.31	29
TLUW6S	6 Str.	1/4	1.44	.50	.13	.31	29
TLUW4S	4 Str.	1/4	1.44	.50	.13	.31	29
TLUW2S	2 Str.	1/4	2.00	.75	.25	.44	45
TLUW1S	1 Str.	1/4	2.00	.75	.25	.44	45
TLU1/0S	1/0 Str.	3/8	2.00	.75	.25	.44	45
TLU2/0S	2/0 Str.	3/8	2.63	1.00	.28	.56	66
TLU3/0S	3/0 Str.	3/8	2.63	1.00	.28	.56	66
TLU4/0S	4/0 Str.	3/8	2.63	1.00	.28	.56	66
TLU025S	250 kcmil	1/2	3.25	1.19	.31	.75	76
TLU030S	300 kcmil	1/2	3.25	1.19	.31	.75	76
TLU035S	350 kcmil	1/2	3.75	1.38	.38	.75	99
TLU040S	400 kcmil	1/2	3.75	1.38	.38	.75	99
TLU050S	500 kcmil	1/2	3.75	1.38	.38	.75	99
TLU060S	600 kcmil	1/2	3.75	1.63	.44	.75	112
TLU070S	700 kcmil	1/2	3.75	1.63	.44	.75	112
TLU075S	750 kcmil	1/2	3.75	1.63	.44	.75	112
TLU080S	800 kcmil	1/2	4.50	1.88	.47	.94	130
TLU090S	900 kcmil	5/8	4.50	1.88	.47	.94	130
TLU100S	1000 kcmil	5/8	4.50	1.88	.47	.94	130
TLU125S	1250 kcmil	5/8	5.00	2.25	.50	1.06	150
TLU150S	1500 kcmil	5/8	5.00	2.25	.50	1.06	161
TLU175S	1750 kcmil	5/8	5.88	2.50	.50	1.19	175
TLU200S	2000 kcmil	5/8	6.13	2.75	.50	1.31	187

For blank pad, add suffix "-U" to catalog number

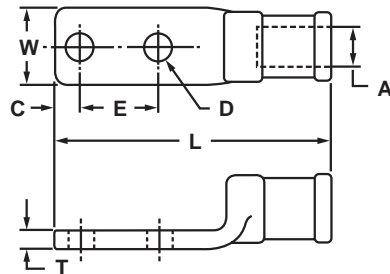
Above terminals can be installed with the following T&B Tooling: 12 ton head (13642), 20 ton head (21920), and 40 ton head (21940)

T&B is a registered trademark of its respective company

Heavy Duty Two Hole Cast Copper Compression Lugs

Type TLU-D

- Provides excellent mechanical strength
- Cast out of pure copper alloy for high conductivity
- Entire connector is electro-tin plated for corrosion resistance
- Can be installed with existing hydraulic crimping tools



CATALOG NUMBER	A CONDUCTOR SIZE	D BOLT SIZE	APPROXIMATE DIMENSIONS (IN.)					T & B DIE INDEX NO.
			L	W	T	C	E	
TLUW8D	8 Str.	1/4	2.00	.50	.13	.34	.63	29
TLUW6D	6 Str.	1/4	2.00	.50	.13	.34	.63	29
TLUW4D	4 Str.	1/4	2.00	.50	.13	.34	.63	29
TLUW2D	2 Str.	1/4	3.00	.75	.25	.50	.75	45
TLUW1D	1 Str.	1/4	3.00	.75	.25	.50	1.00	45
TLU1/0D	1/0 Str.	3/8	3.00	.75	.25	.50	1.00	45
TLU2/0D	2/0 Str.	3/8	4.63	1.00	.28	.63	1.75	66
TLU3/0D	3/0 Str.	1/2	4.63	1.00	.28	.63	1.75	66
TLU4/0D	4/0 Str.	1/2	4.63	1.00	.28	.63	1.75	66
TLU025D	250 kcmil	1/2	4.88	1.19	.31	.63	1.75	76
TLU030D	300 kcmil	1/2	4.88	1.19	.31	.63	1.75	76
TLU035D	350 kcmil	1/2	5.38	1.38	.38	.63	1.75	99
TLU040D	400 kcmil	1/2	5.38	1.38	.38	.63	1.75	99
TLU050D	500 kcmil	1/2	5.38	1.38	.38	.63	1.75	99
TLU060D	600 kcmil	1/2	5.38	1.63	.44	.63	1.75	112
TLU070D	700 kcmil	1/2	5.38	1.63	.44	.63	1.75	112
TLU075D	750 kcmil	1/2	5.38	1.63	.44	.63	1.75	112
TLU080D	800 kcmil	1/2	5.75	1.88	.47	.63	1.75	130
TLU090D	900 kcmil	1/2	5.75	1.88	.47	.63	1.75	130
TLU100D	1000 kcmil	1/2	5.75	1.88	.47	.63	1.75	130
TLU125D	1250 kcmil	1/2	5.00	2.25	.50	.63	1.75	150
TLU150D	1500 kcmil	1/2	5.00	2.25	.50	.63	1.75	161
TLU175D	1750 kcmil	1/2	6.63	2.50	.50	.63	1.75	175
TLU200D	2000 kcmil	1/2	6.63	2.75	.50	.63	1.75	187

For blank pad, add suffix "-U" to catalog number

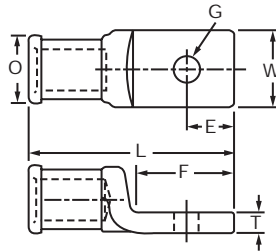
Above terminals can be installed with the following T&B Tooling: 12 ton head (13642), 20 ton head (21920), and 40 ton head (21940)

T&B is a registered trademark of its respective company

Heavy Duty One Hole Cast Copper Lugs - Side Formed for Diesel Locomotive Cable (DLO)

Type LL-S-SF

- Heavy duty cast copper compression lugs for traction motor applications
- Cast out of pure copper alloy for high conductivity
- Side formed design allows for conductor offset from mounting surface
- Electro-tin plated for corrosion resistance
- Suitable for installation with existing hydraulic crimping tools



CATALOG NUMBER	DLO CONDUCTOR SIZE	G BOLT SIZE	APPROXIMATE DIMENSIONS (IN.)						T&B DIE INDEX NO.
			L	F	E	O	W	T	
LL49765SSF	150/24	1/4	1.88	.81	.38	.66	.63	.19	50
LL47244SSF	225/24	3/8	2.13	1.00	.44	.72	.81	.22	54
LL41157SSF	275/24	3/8	2.13	1.00	.44	.72	.81	.22	54
LL53178SSF	325/24	3/8	2.13	1.00	.44	.72	.81	.22	54
LL45087SSF	375/24	3/8	2.50	1.25	.56	.78	1.00	.25	60
LL44593SSF	450/24	5/8	2.50	1.25	.53	.78	1.00	.25	60
LL41158SSF	450/24	3/8	2.50	1.25	.53	.78	1.00	.25	60
LL49332SSF	550/24	5/8	2.88	1.25	.75	1.05	1.19	.31	76
LL44146SSF	550/24	3/8	2.88	1.50	.75	1.05	1.19	.31	76
LL41159SSF	550/24	1/2	2.88	1.50	.75	1.05	1.19	.31	76
LL42608SSF	650/24	1/2	2.88	1.50	.75	1.05	1.19	.31	76
LL41160SSF	775/24	1/2	2.88	1.50	.75	1.05	1.19	.31	76
LL40305SSF	775/24	3/8	3.06	1.50	.75	1.05	1.19	.31	76
LL40744SSF	775/24	5/8	3.31	1.94	.75	1.05	1.19	.31	76
LL42873SSF	925/24	1/2	3.38	1.50	.75	1.16	1.19	.34	87
LL41149SSF	925/24	5/8	3.38	1.50	.75	1.16	1.19	.34	87
LL47526SSF	1100/24	1/2	4.00	2.00	.88	1.34	1.63	.41	99
LL44127SSF	1325/24	1/2	4.00	2.00	.88	1.38	1.63	.41	107
LL44231SSF	1600/24	1/2	4.25	2.13	1.00	1.44	1.63	.44	112
LL47742SSF	1600/24	3/4	4.25	2.13	1.00	1.44	1.63	.44	112
LL47833SSF	1600/24	3/8	4.25	2.13	1.00	1.44	1.63	.44	112
LL40862SSF	1925/24	1/2	4.25	2.13	1.00	1.44	1.63	.44	112
LL50747SSF	2300/24	5/8	4.75	2.38	1.19	1.66	1.88	.50	130

For blank pad, add suffix "-U" to catalog number

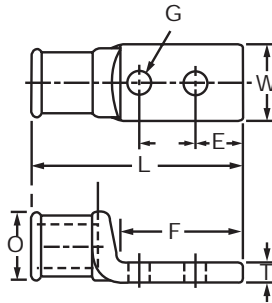
Above terminals can be installed with the following T&B Tooling: 12 ton head (13642), 20 ton head (21920), and 40 ton head (21940)

T&B is a registered trademark of its respective company

Heavy Duty Two Hole Cast Copper Lugs - Side Formed for Diesel Locomotive Cable (DLO)

Type LL-D-SF

- Heavy duty cast copper compression lugs for traction motor applications
- Cast out of pure copper alloy for high conductivity
- Side formed design allows for conductor offset from mounting surface
- Electro-tin plated for corrosion resistance
- Suitable for installation with existing hydraulic crimping tools



CATALOG NUMBER	DLO CONDUCTOR SIZE	G BOLT SIZE	APPROXIMATE DIMENSIONS (IN.)							T & B DIE INDEX NO.
			L	F	D	E	O	W	T	
LL51797DSF	150/24	1/4	3.06	2.00	1.00	.34	.66	.63	.19	50
LL49763DSF	225/24	3/8	3.13	2.00	1.00	.50	.72	.81	.22	54
LL49764DSF	275/24	3/8	3.13	2.00	1.00	.50	.72	.81	.22	54
LL46111DSF	450/24	1/2	4.25	3.00	1.25	.63	.78	1.00	.25	60
LL49238DSF	550/24	3/8	3.31	1.94	1.00	.50	1.05	1.19	.31	76
LL41147DSF	550/24	1/2	4.38	3.00	1.75	.63	1.05	1.19	.31	76
LL47272DSF	650/24	1/2	4.38	3.00	1.75	.63	1.05	1.19	.31	76
LL50774DSF	775/24	5/16	2.88	1.50	.81	.31	1.05	1.19	.31	76
LL52078DSF	775/24	5/16	3.31	1.94	.88	.75	1.05	1.19	.31	76
LL40467DSF	775/24	3/8	3.31	1.94	1.00	.50	1.05	1.19	.31	76
LL49761DSF	775/24	1/2	4.38	3.00	1.75	.63	1.05	1.19	.31	76
LL40743DSF	925/24	3/8	4.38	2.50	1.00	.44	1.16	1.19	.34	87
LL41152DSF	925/24	3/8	5.38	3.50	1.00	.44	1.16	1.19	.34	87
LL47521DSF	925/24	1/2	5.38	3.50	1.75	.63	1.16	1.19	.34	87
LL50963DSF	1100/24	1/2	5.50	3.50	1.75	.63	1.38	1.63	.41	107
LL41151DSF	1325/24	3/8	5.50	3.50	1.00	.50	1.38	1.63	.41	107
LL41148DSF	1325/24	1/2	5.50	3.50	1.75	.63	1.38	1.63	.41	107
LL49758DSF	1600/24	1/2	5.63	3.50	1.75	.63	1.44	1.63	.44	112
LL52943DSF	1925/24	3/8	4.00	2.06	1.00	.44	1.44	2.00	.31	112
LL41150DSF	1925/24	3/8	4.25	2.13	1.00	.44	1.44	1.63	.44	112
LL42683DSF	1925/24	1/2	5.63	3.50	1.75	.63	1.44	1.63	.44	112
LL49532DSF	2000/24	1/2	5.63	3.50	1.75	.63	1.44	1.63	.44	112
LL47522DSF	2300/24	1/2	5.88	3.50	1.75	.63	1.66	1.88	.50	130
LL50651DSF	2750/24	1/2	6.63	3.50	1.75	.63	1.91	2.13	.56	150

For blank pad, add suffix "-U" to catalog number

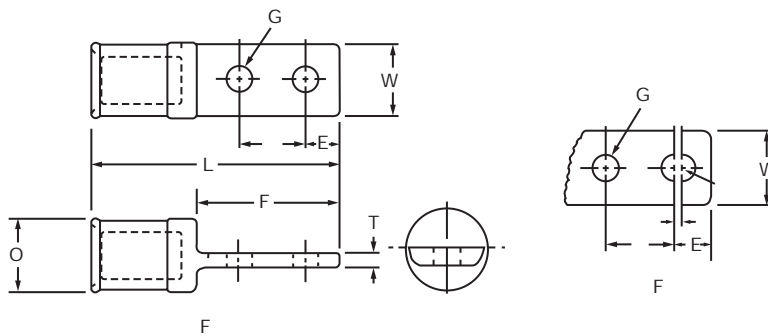
Above terminals can be installed with the following T&B Tooling: 12 ton head (13642), 20 ton head (21920), and 40 ton head (21940)

T&B is a registered trademark of its respective company

Heavy Duty Two Hole Cast Copper Lugs – Center Formed for Diesel Locomotive Cable (DLO)

Type LL-D-CF

- Heavy duty cast copper compression lugs for traction motor applications
- Cast out of pure copper alloy for high conductivity
- Center formed design maintains conductor alignment with mounting surface
- Electro-tin plated for corrosion resistance
- Suitable for installation with existing hydraulic crimping tools



CATALOG NUMBER	FIG. NO.	DLO CONDUCTOR SIZE	G BOLT SIZE	APPROXIMATE DIMENSIONS (IN.)							T&B DIE INDEX NO.
				L	F	D	E	O	W	T	
LL47428DCF	1	133/24	5/16	2.94	1.88	.88	.44	.66	.59	.20	50
LL47271DCF	1	150/24	5/16	2.94	1.88	.88	.44	.66	.59	.20	50
LL44385DCF	1	225/24	5/16	3.00	1.88	.88	.44	.72	.69	.20	54
LL50545DCF	1	275/24	5/16	3.00	1.88	.88	.44	.72	.69	.20	54
LL44075DCF	1	325/24	5/16	3.00	1.88	.88	.44	.72	.69	.20	54
LL41155DCF	1	375/24	5/16	3.13	2.00	.88	.44	.78	.78	.20	60
LL41156DCF	1	450/24	5/16	3.13	2.00	.88	.44	.78	.78	.20	60
LL36996DCF	1	550/24	5/16	3.19	1.88	.88	.44	1.05	.94	.20	76
LL42596DCF	1	650/24	5/16	3.19	1.88	.88	.44	1.05	.94	.20	76
LL41153DCF	1	775/24	5/16	3.19	1.88	.88	.44	1.05	.94	.20	76
LL44131DCF	1	925/24	3/8	3.75	2.06	1.00	.44	1.19	1.13	.38	87
LL44573DCF	1	1100/24	3/8	3.75	2.06	1.00	.44	1.34	1.34	.38	99
LL44096DCF	1	1325/24	3/8	3.75	2.06	1.00	.44	1.38	1.34	.38	107
LL43606DCF	2	1325/24	3/8	3.75	2.06	.88-1.00	.56	1.38	1.34	.38	107
LL50429DCF	1	1600/24	3/8	3.75	2.06	1.00	.44	1.38	1.34	.38	107
LL41154DCF	2	1925/24	3/8	3.81	2.06	.88-1.00	.56	1.44	1.44	.38	112
LL42684DCF	1	2300/24	3/8	4.28	2.13	1.00	.44	1.66	1.59	.38	130

For blank pad, add suffix "-U" to catalog number

Above terminals can be installed with the following T&B Tooling: 12 ton head (13642), 20 ton head (21920), and 40 ton head (21940)

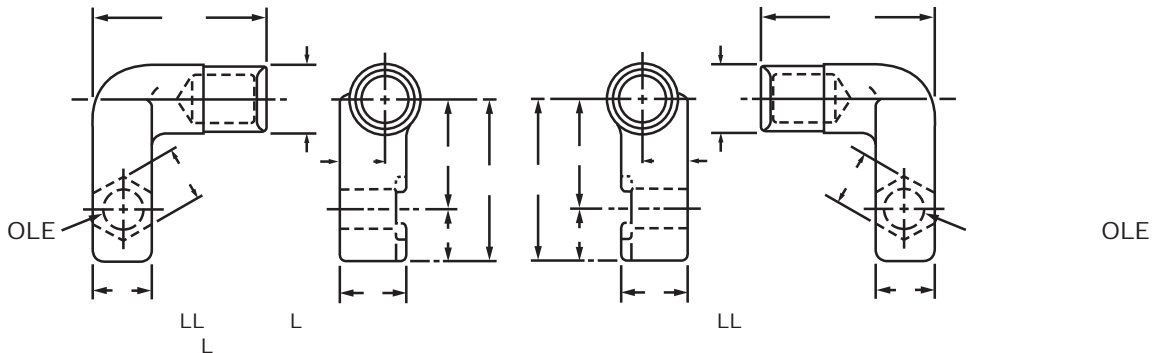
T&B is a registered trademark of its respective company

Cast Copper Elbows - 90°

Type LLN

For 775/24 DLO Conductor

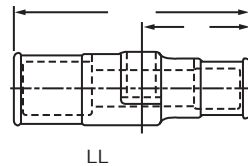
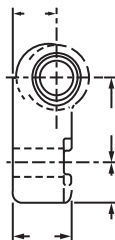
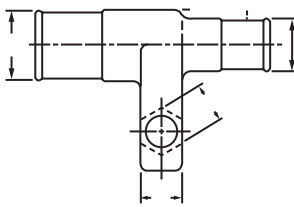
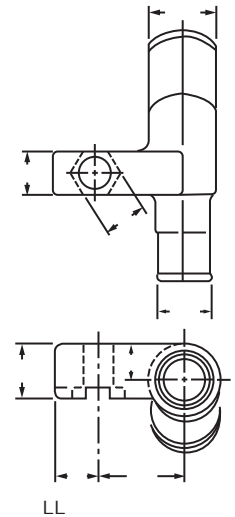
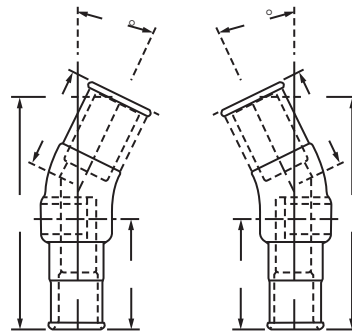
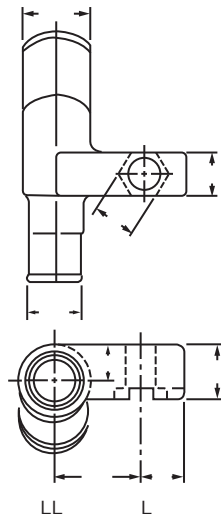
- Heavy duty cast compression lugs used in a wide variety of mass transit applications including locomotives and traction motors
- Manufactured from high conductivity copper alloy
- Electro-tin plated for corrosion resistance
- Recessed hex pocket holds bolt head captive for single wrench installation
- Can be installed with industry standard crimping tools
- Also available in 550/24 by adding suffix "-550/24" to catalog number
- Recommended installation tooling:
 - For 775/24 end, use T&B die index number 76
 - For 550/24 end, use T&B die index number 76



Cast Copper Reducers

Type LLR

- Heavy duty cast compression lugs used in a wide variety of mass transit applications including locomotives and traction motors
- Manufactured from high conductivity copper alloy
- Electro-tin plated for corrosion resistance
- Recessed hex pocket holds bolt head captive for single wrench installation
- Can be installed with industry standard crimping tools
- Recommended installation tooling:
 - For 1100/24 end, use T&B die index number 99
 - For 775/24 end, use T&B die index number 76
 - For 550/24 end, use T&B die index number 76

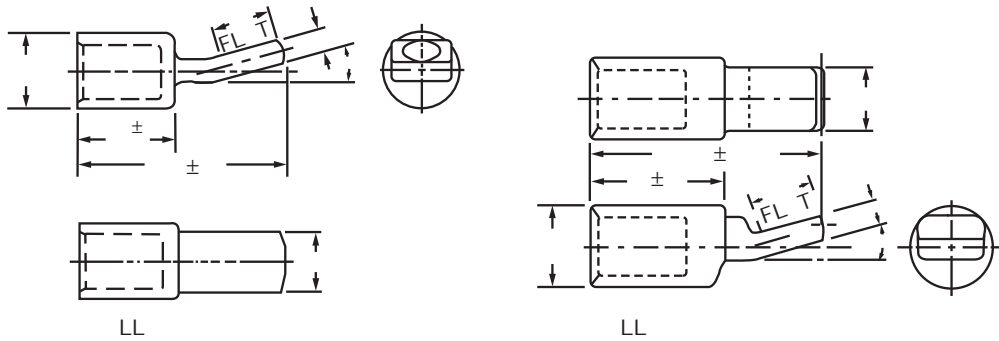


Cast Copper Lugs - Blank Tongue

Type LL-U

For 1100/24

- Heavy duty cast compression lugs used in a wide variety of mass transit applications including locomotive traction motors
- Manufactured from high conductivity copper alloy
- **Blank tongue allows for flexibility during field installation**
- For Electro-tin plating, suffix catalog number with "-TN"
- Recommended installation tooling:
 - For 1100/24 end, use T&B die index number 99



CATALOG NUMBER	A
LL44879U15	15°
LL39640U30	30°