

L stoplamp switches

L2 MECHANICAL

SPST Normally On

Spring return to On.

8645

1/2" -20 thread mounting stem, 3/8" long.
Plunger 11/32" long.



8715 ★

Moisture-resistant plastic body and plunger.
1/2" diameter mounting stem, 1 5/32" long.

Replaces: AMC 3189147, 3194569, 4488295, 5352620, 9770419, Chrysler 2809033, Delco D864, D866, D868, D873, U850, U851, U852, D885, Ford C8ZZ-13480A, C7TZ, D2TZ-13480B, GMC 536289, 1261219, 1362835, 959, 1993509, 1998192, 196, 667, 3631535, 3889606, 3889607, 3952426, 9772188, 9776994, 14074323, 25524844, International 312739C91, 358560C91, Motorcraft SWG-535, SW-691A, SW-1512, VW 175957656A, Wagner FC-32200, FC-32085, FC-66780.



8717*

Moisture-resistant plastic body and plunger. 11/32" diameter mounting hole.

Replaces: Delco D879, GMC 1993595, Motorcraft SW-523.



8713*

Moisture-resistant plastic body and plunger. 1/4"-28 mounting stem.

Replaces: Chrysler 2258864, 2496985, 249712, 2580998.



8486 lever actuated (R)

When viewed from the terminals, the lever projects to the right (see also 8487).
Lever is 2 7/8" overall length.
Two tapped 10-32 mounting holes, 5/8" on centers.

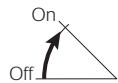
Replaces: Delco D851, D853, D855, GMC 1997901, 1997915, 1997922, Motorcraft SWG-317, Wagner FC-21630.



8487 lever actuated (L)

When viewed from the terminals, the lever projects to the left. Otherwise, the switch is identical to 8486.

Replaces: Delco D852, D854, DR-2401, GMC 1997913, 1997921, Motorcraft SWG-318, 319, Wagner FC-21632.



SPST Normally Off

Spring return to Off.

8723*

Contacts close at 10 to 14.5 lbs pressure.
9/16" diameter mounting holes.

Replaces: Ford C5AZ, C7ZZ, C8ZZ, C9ZZ-13480B, C8ZZ-13480C, D5UZ-13480A. Motorcraft SW-752, 864, 1255.

8722*

Contacts close at 24 to 34 lbs pressure.
9/16" diameter mounting holes.

Replaces: Delco 1972544, Ford C5AZ, C7AZ, C7ZZ, C9ZZ-13480A, Motorcraft SW-863, 864.



8724*

Contacts close at 24 to 34 lbs pressure.
.562" diameter mounting holes. Two pole connector has one male and one female bullet connector.

Replaces: Ford C5CZ, C7TZ, C7UZ-13480A, Motorcraft SW-665.



8732*

Contacts close at 20 to 29 lbs pressure.
.562" diameter mounting holes. Two pole connector has one male and one female bullet connector.

Replaces: Ford C9AZ-13480C, D2AZ-13480A, Motorcraft SW-860.



8743*

Contacts close at 14.5 to 20.5 lbs pressure.
9/16" diameter mounting holes.

Replaces: Delco F857, Ford E04Y-13480A, Motorcraft SWX-1303.



8757*

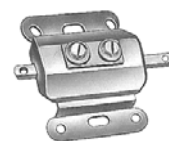
Contacts close at 5 to 8 lbs pressure.
9/16" diameter mounting holes.

Replaces: Ford E3FZ, E6FZ-13480A, E1FZ-13480A, B, Motorcraft SW-1639, SW-1640, SW-1640-A.



8466 for push or pull operation

Push or pull to On, spring return to Off.
11/32" long plunger with 9/64" diameter hole for attachment of cable or actuating device. Four 13/64" diameter mounting holes.
1 1/2"L x 2"W center to center.



★ Rapid ship item. BP Available in retail clamshell pack. ★ Minimum order quantity may apply.



Cole Hersee Co. 20 Old Colony Ave, Boston, MA 02127-2467

106

T 617.268.2100 F 617.268.9490 www.colehersee.com