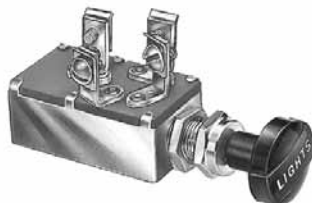


## 3-Position

Three knob pull positions: In – Mid – Out.  
 In = Headlamps Off; Mid = Parking Lights and Tail Lights On;  
 Out = Headlights and Tail Lights On



### 7124 with black knob 'Lights'



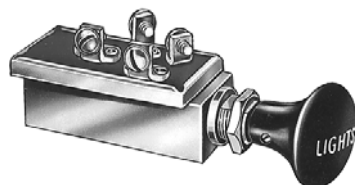
Four screw terminals, plated steel case, mounting stem with 7/16"-28 thread. 15A per circuit at 12V DC.

### 7124-06 with SAE headlamp symbol



Same as 7124, but with black knob imprinted with SAE headlamp symbol.

### 72100 with black knob 'Lights' ★

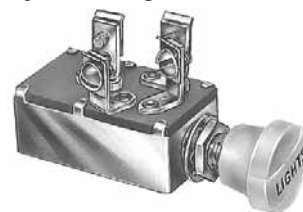


O-ring seal in mounting stem, gasket seal at terminal insulator. Four screw terminals, diecast case, silver contacts, mounting stem with 7/16"-28 thread. 20A per circuit at 12V DC.

### 72099\*

Same as 72100, but without sealing.

### 7152 with ivory knob 'Lights'



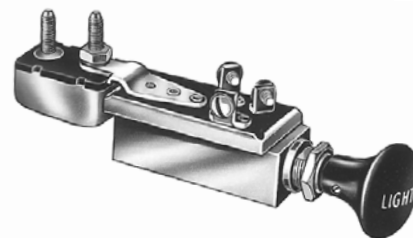
Four screw terminals, plated steel case, silver contacts, mounting stem with 3/8"-24 thread. 15A per circuit at 12V DC.

### 7157 with breaker



With 30A at 12V circuit breaker, ivory knob imprinted 'Lights'. Three screw terminals, plated steel case, silver contacts, mounting stem with 7/16"-28 thread.

### 72101 with breaker



With 30A at 12V circuit breaker, black knob imprinted 'Lights'. O-ring seal in mounting stem and gasket seal at terminal insulator. Three screw terminals, diecast case, silver contacts, mounting stem with 7/16"-28 thread.

### 72102 with breaker

Same as 72101, but without sealing.

### 7127 with fuse



With 20A at 12V glass fuse, black knob imprinted 'Lights'. Four screw terminals, plated steel case, mounting stem with 7/16"-28 thread.

CONTINUED **D5**

★ Rapid ship item. BP Available in retail clamshell pack. ★ Minimum order quantity may apply.

**With Dimmer**

These switches have Headlamp/Parking Lights/Tail Lights functions as noted above, plus rotary dimmer functions for panel/dome lamps.

**71092-02 4.5 Ohm, with internal 15A breaker ★**

In = All lights Off, except dome light on rotary dimmer.  
Mid = Parking lights & rear lights On; panel lights & dome light on rotary dimmer.

Out = Headlights & rear lights On; panel lights & dome light on rotary dimmer.

4.5 Ohm Dimmer, 15A at 12V internal Circuit Breaker. With black knob imprinted with SAE headlamp symbol. Eight blade terminals accept Delphi (Packard) connector 2977645 or 2984169. Plated steel case. Mounting stem 7/16"-28 thread. Terminal connections: 1 to battery +; 2 to panel lights; 3 to rear lights; 4 to rear lights; 5 to battery +; 6 to headlights; 7 to parking lights; A to dome light. Connect frame ground terminal to ground.

**71092**

Same as 71092-02, but without knob.

**7178 3.75 Ohm, with 30A breaker**

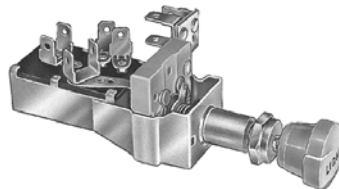
Rotation of knob dims panel lights in Mid and Out knob positions. 3.75 Ohm Dimmer, 30A at 12V Circuit Breaker. With black knob imprinted 'Lights'. Four screw terminals. Plated steel case. Mounting stem 3/8"-24 thread.

**71016 11 Ohm, with 20A breaker**

Rotation of knob dims panel lights in Mid and Out knob positions. 11 Ohm Dimmer, 20A at 12V Circuit Breaker. With tan knob imprinted 'Lights'. Four screw terminals. Plated steel case. Mounting stem 3/8"-24 thread.

**71016-01 11 Ohm, with 30A breaker**

Same as 71016, but with 30A at 12V Circuit Breaker.

**71042 7 Ohm**

Rotation of knob dims panel lights in Mid and Out knob positions. 7.0 Ohm Dimmer. With ivory knob imprinted 'Lights'. Three single and three double blade terminals. Plated steel case. Mounting stem 3/8"-24 thread.

**4-position Headlamp and Worklight Switches**

Four knob pull positions: In – Mid1 – Mid2 – Out.

**7112 headlamp switch**

Five screw terminals. Plated steel case. Mounting stem 3/8"-24 thread. With tan knob imprinted 'Lights'. 10A at 12V DC.

**71033-02\* work light switch**

Three blade terminals. Plated steel case. Mounting stem 7/16"-28 thread. With O-ring seal at the mounting stem. With black knob imprinted with SAE work light symbol.

universal



We have a wide selection of general purpose Push-Pull Switches: SPST, SPDT, DPST in steel case, brass case, and plasticized. See Section F.