

Aluminum Panelboard Lugs

Type PB

For use with two, three or four copper or aluminum conductors

- Manufactured from high strength aluminum alloy extrusion
- Electro-tin plated to ensure minimum contact resistance and protection against corrosion when used with copper wire
- Stack design allows for easy installation where space is limited
- Connectors are rated for 600 V, 194°F (90°C) applications
- The use of oxide inhibitor is recommended for all aluminum terminations

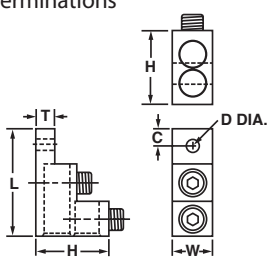


FIG. 1

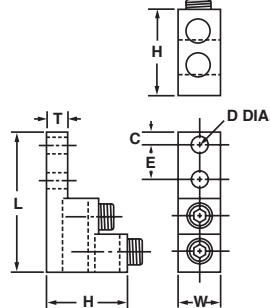


FIG. 2

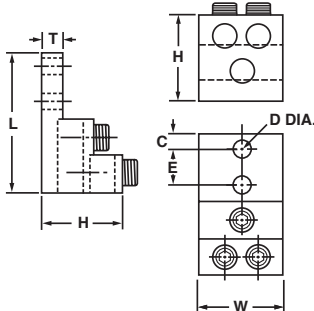


FIG. 3

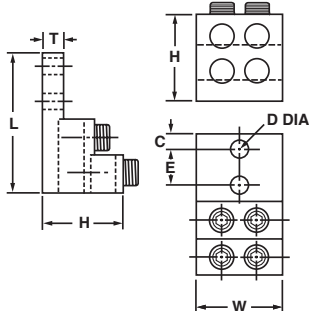


FIG. 4

CATALOG NUMBER	FIG. NO.	NUMBER OF CONDUCTORS	CONDUCTOR RANGE	APPROXIMATE DIMENSIONS (IN.)							MTG. BOLT SIZE	HEX SIZE
				L	W	H	T	C	D (DIA.)	E		
PB2-300	1	2	6 Str. - 300 kcmil	3.00	1.00	2.00	.31	.47	.33	-	5/16	5/16
PB2-600	2	2	2 Str. - 600 kcmil	4.91	1.50	3.00	.75	.38	.41	1.38	3/8	3/8
PB2-750	2	2	1/0 Str. - 750 kcmil	4.91	1.56	3.00	.75	.38	.41	1.38	3/8	3/8
PB3-600	3	3	2 Str. - 600 kcmil	4.91	2.50	3.00	.75	.38	.41	1.38	3/8	3/8
PB3-750	3	3	1/0 Str. - 750 kcmil	4.91	2.84	3.00	.75	.38	.41	1.38	3/8	3/8
PB4-600	4	4	2 Str. - 600 kcmil	4.91	2.50	3.00	.75	.38	.41	1.38	3/8	3/8
PB4-750	4	4	1/0 Str. - 750 kcmil	4.91	2.84	3.00	.75	.38	.41	1.38	3/8	3/8

Test conductor size installed in connector	Tightening torque, N-m (lbf-in)							
	Slotted head No. 10 and larger ^a				Hexagonal head – external drive socket wrench			
	Slot width – 1.2 mm (0.047 in) or less and slot length – 6.4 mm (1/4 in) or less		Slot width – over 1.2 mm (0.047 in) or slot length – over 6.4 mm (1/4 in)		Split-bolt connectors		Other connectors	
	A	B	A	B	A	B	A	B
30 – 10 (0.05 – 5.3)	1.7 (15)	2.3 (20)	2.8 (25)	4.0 (35)	7.3 (65)	9.0 (80)	6.8 (60)	8.5 (75)
8 (8.4)	2.3 (20)	2.8 (25)	3.4 (30)	4.5 (40)	7.3 (65)	9.0 (80)	6.8 (60)	8.5 (75)
6 – 4 (13.2 – 21.2)	2.8 (25)	4.0 (35)	4.0 (35)	5.1 (45)	15.3 (135)	18.6 (165)	10.2 (90)	12.4 (110)
3 (26.7)	2.8 (25)	4.0 (35)	4.5 (40)	5.6 (50)	25.4 (225)	31.1 (275)	14.1 (125)	16.9 (150)
2 (33.6)	3.4 (30)	4.5 (40)	4.5 (40)	5.6 (50)	25.4 (225)	31.1 (275)	14.1 (125)	16.9 (150)
1 (42.4)	-	-	4.5 (40)	5.6 (50)	25.4 (225)	31.1 (275)	14.1 (125)	16.9 (150)
1/0 – 2/0 (53.5 – 87.4)	-	-	4.5 (40)	5.6 (50)	35.6 (315)	43.5 (385)	18.9 (150)	20.3 (180)
3/0 – 4/0 (85.0 – 107.2)	-	-	4.5 (40)	5.6 (50)	45.2 (400)	56.5 (500)	22.6 (200)	28.2 (250)
250 – 350 (127 – 177)	-	-	4.5 (40)	5.6 (50)	62.1 (550)	73.4 (650)	28.2 (250)	36.7 (325)
400 (203)	-	-	4.5 (40)	5.6 (50)	76.3 (675)	93.2 (825)	28.2 (250)	36.7 (325)