

# ALUMINUM PENN-CRIMPS® • TYPE BCUA

Crimp splices for #6 stranded thru 1000 MCM copper or aluminum wire or cable



BCUA SPLICES ARE SUITABLE FOR USE AT VOLTAGES UP TO 35KV PROVIDED CONNECTOR IS TAPED IN ACCORDANCE WITH ACCEPTED PRACTICES. 5KV IS MAXIMUM VOLTAGE LEVEL IN ALL BARE SPLICE APPLICATIONS.

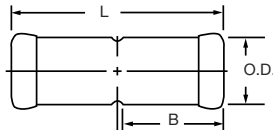
Seamless, one piece, pure aluminum construction with tin plating assures maximum conductivity. Generous entrance chamfer provides easy cable insertion. The barrels are filled with Cual-Aid® and capped at factory to eliminate the need for separate application of Cual-Aid® to the conductor. Wire brushing of aluminum conductor is required.

This assures a stable, cool running joint. Positive cable stops insure proper insertion.

Catalogue number and conductor size marked on every piece to insure positive identification.

Can be installed with existing crimping tools.

Colour coding conforms to industry requirements to insure proper connection/die selection and to provide for faster installation.



Part #	1 Conductor Range	Colour Code	Wire Diam (in)	Approximate Dimensions (in inches)			Crimping Tool Reference				
				O.D.	B	L	Alt. Tooling		Penn-Union		
							Burndy Index No.	T&B Die	PUC Dies	Pressure Setting	
TDY-1	TDY-U										
BCUA8	8 Str.	Blue	.146	19/64	3/4	1 3/4	B-374	TBM-5	T-374*	2	2
BCUA6	6 Str.	Gray	.184	11/32	3/4	1 5/8	B-346		T-346*		
BCUA4	4 Str.	Green	.232	7/16	7/8	1 7/8	B-375	50	T-11/355	5	5
BCUA2	2 Str.	Pink	.292	17/32	1 1/8	2 3/8	B-348		T-12/348		
BCUA1	1 Str.	Gold	.332	17/32	29/32	1 15/16	B-471		T-471*		
BCUA1/0	1/0 Str.	Tan	.375	19/32	1	2 1/8	B-296		T-296		
BCUA2/0	2/0 Str.	Olive	.419	1 1/16	1 3/32	2 5/16	B-297		T-297		
BCUA3/0	3/0 Str.	Ruby	.470	3/4	1 1/4	2 5/8	B-467	60	T-467	7	7
BCUA4/0	4/0 Str.	White	.528	27/32	1 15/16	2 3/4	B-298	66	T-17*		
BCUA025	250 MCM	Red	.575	15/16	1 13/32	2 15/16	B-324	71	T-18/324		
BCUA030	300 MCM	Blue	.634	1	1 1/2	3 1/8	B-470	76	T-470*		
BCUA035	350 MCM	Brown	.682	1 1/8	1 5/8	3 3/8	B-299	87	T-20/299		
BCUA040	400 MCM	Green	.728	1 3/16	1 13/16	3 3/4	B-472	94	T-22/472	9	9
BCUA050	500 MCM	Pink	.815	1 5/16	1 7/8	3 7/8	B-300	106	T-300		
BCUA060	600 MCM	Black	.893	1 7/16	2	4 1/8	B-473	115	T-473		
BCUA075	750 MCM	Red	.999	1 19/32	2 1/4	4 5/8	B-301	130	-		
BCUA080	800 MCM	Gray	1.031	1 21/32	2 15/16	4 3/4	B-474	140	-		
BCUA100	1000 MCM	Brown	1.153	1 27/32	2 9/16	5 1/4	B-302	150	-		

\* Not UL Listed.

\* Consult factory for availability of dies. Not available at this time.

1 Concentric, Compressed and Compact and Compact Stranding. For other cable types see chart on page 109.

CSA approved with T&B, Burndy, Versa-Crimp, Huskie Tooling and Penn-Union Tools. See CSA File # LR23769-20, figure A5, appendix I.

Installation tools see page F-24

F