

CORNER EDGE DUCT

Modular angular trunking for cabling.

Material: Self-extinguishing rigid PVC Class 1 (UL94-VO) RoHS certified.

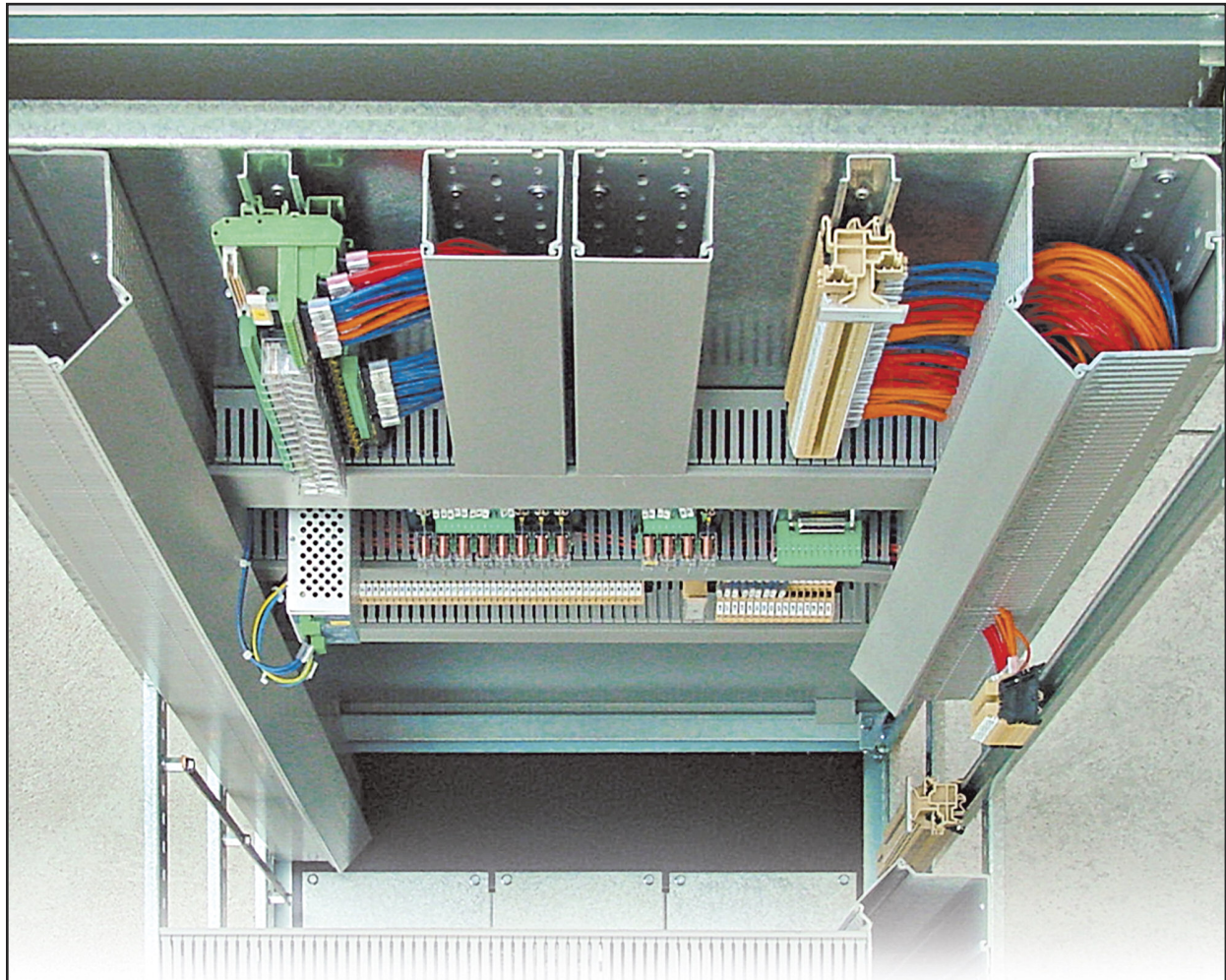


Patented:

N° 00246688

MI99U000250

23/04/1999



D

COLOUR:



G = Grey

CORNER EDGE DUCT

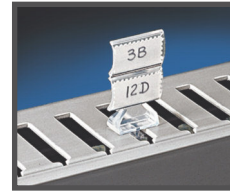
Modular angular trunking for cabling.

Material: Self-extinguishing rigid PVC Class 1 (UL94-VO)

RoHS certified.



Part Number	Duct Size WxH		Standard Carton Qty	Length	
	inches	mm		ft	mtr
S1106080	4.33x2.36x3.15	110x60x80	4	6.56	2



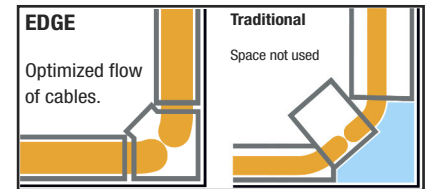
Designed for use with several accessories: wire retainers, label holders etc.

Advantages of the system.

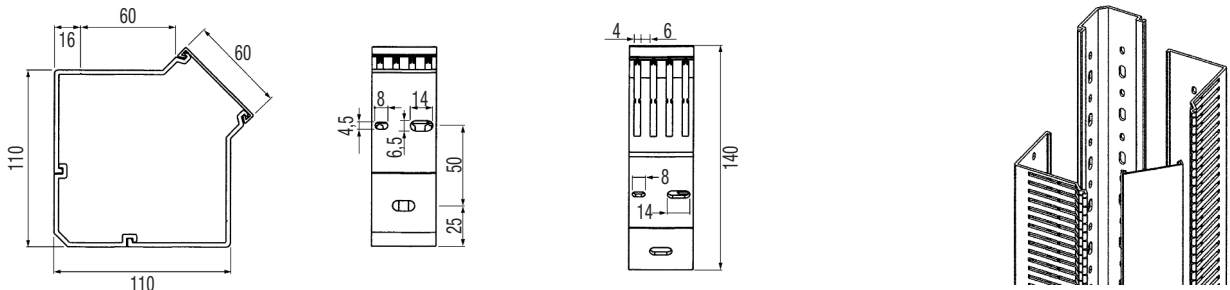
The Edge wire duct is designed to be used on the very corner of the enclosure where the space is normally not utilized. This system allows wires and cables to be routed professionally to the lateral panels.

Features of the EDGE duct.

It is available in one single size, 110 X 110 mm (4.25 X 4.25 in.) with 60 mm (2.25 in.) opening and useful section of 11.050 mmq (17.125 square in.); it can be supplied with openings of 25- 40- 80 mm (1-1.5-3 in.) changing the "L" piece only. Maintaining the same wall with a considerable save of the trunking costs and of the warehouse of the several sizes of use.



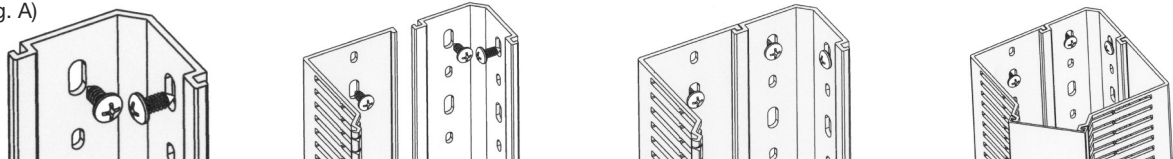
D



Installation.

Connecting the two slotted walls, 4 mm slots, on the edge-bottom, you have the possibility of use the bottom and lateral panels for the fixing of instruments and terminals. You can avoid strange applications that, to obtain the same result, need the fixing of the traditional trunking on edge clamps, with a solution that restricts the space for the containing of the wires.

(fig. A)



Fix the corner profile between the panels, with 2-4 rivets per meter (see fig. A). Set under the profile and in the suitable grooves the slotted walls. Fix the panel with 2-4 rivets RIV1-RIV2 per meter. Fix by pressing the cover. To hold back the wires, use the cross arm TR6 not supplied.

Accessories

PTR



WT-1 – Duct Cutting Tool

Complete selection of accessories and tools for installation:
 see pages D-8, 9

DUCT ACCESSORIES

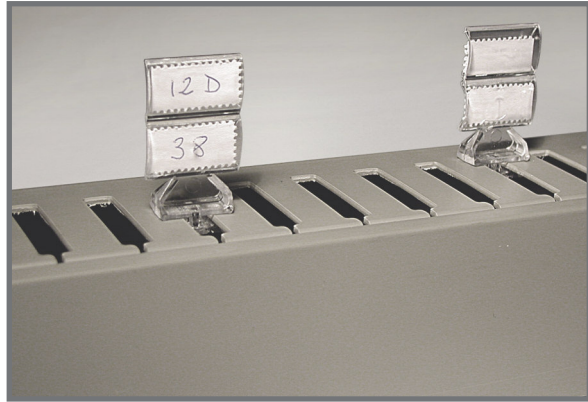
PTE

Part Number	CP Type	PCS Package
PTE	PTE	250 (5x50)

PLEASE CALL FOR PRODUCT AVAILABILITY

Label Holder.
 For Type E - A wire ducts.

COLOUR: Transparent



PTR

Part Number	CP Type	PCS Package
PTR	PTR	100 (4x25)

PLEASE CALL FOR PRODUCT AVAILABILITY

Cross arm for Type E - A trunkings.



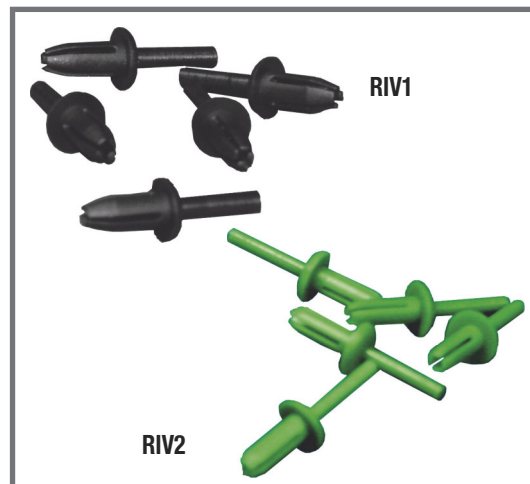
RIV1 / RIV2

Part Number	Ø in.	Ø mm.	PCS Package
RIV1	0.25	6.5	1000 (5x200)
RIV2	0.18	4.5	1000 (5x200)

PLEASE CALL FOR PRODUCT AVAILABILITY

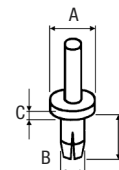
Rivets. To fix the ducts to panels.
 Material: Nylon

COLOUR: RIV1 Black
 RIV2 Green



RIV 1 expansion from 6.5 to 7.5 mm
 RIV2 from 4.5 to 5.5 mm

Type	A	B	C	D
RIV1	11.3	6	2	10
RIV2	10	4.5	3	8.5



DUCT ACCESSORIES (Continued)

PRRIV

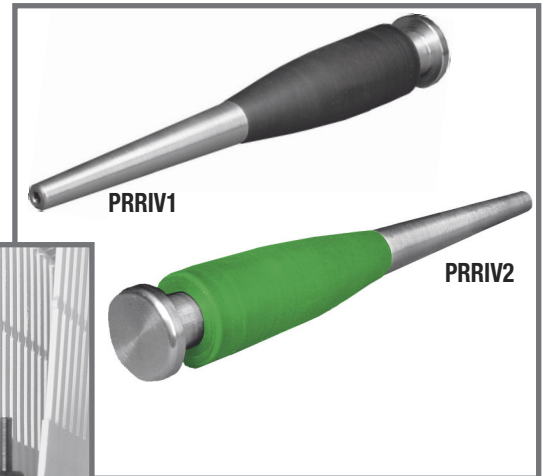
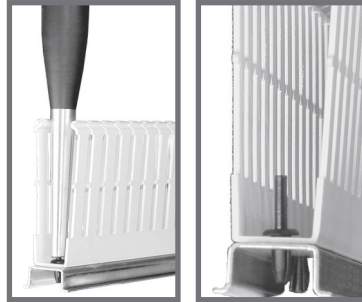
Part Number	Ø in.	Ø mm.	PCS Package
PRRIV1	0.25	6.5	1000 (5x200)
PRRIV2	0.18	4.5	1000 (5x200)

PLEASE CALL FOR PRODUCT AVAILABILITY

Riveting tool.

For the fast installation of the RIV1 and RIV2 rivets.

PRRIV1 = Riveting tool RIV1
 PRRIV2 = RIV2 adapter



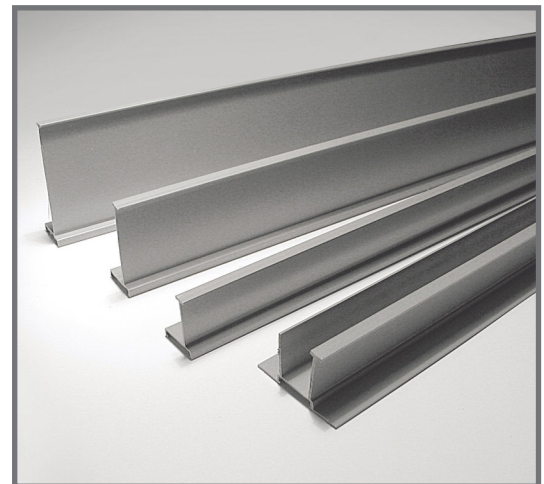
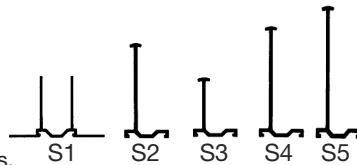
S(C)

Part Number	H		PCS Package
	inch.	mm.	
S1C (2 separators)	1.57	40	30
S2C	2,36	60	50
S3C	1.57	40	60
S4C	3.15	80	32
S5C	3.94	100	32

PLEASE CALL FOR PRODUCT AVAILABILITY

Cable separator.

For separating the cables housed inside the ducting. Snap on the built-in rail of the duct. Several separation schemes can be obtained using different separators.

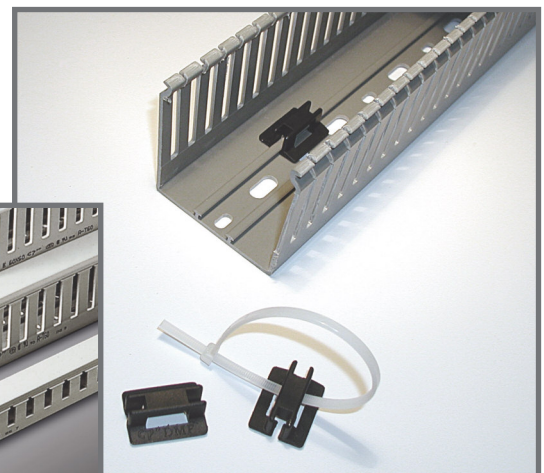
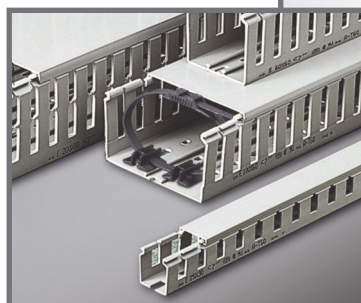


DMF

Part Number	CP Type	PCS Package
DMF	DMF	100 (2x50)

PLEASE CALL FOR PRODUCT AVAILABILITY

Cable tie holder which can be attached to all ducts fitted with a base rail.
 Material: Nylon



D