

## CIRCUIT BREAKERS - HIGH AMP

### Type I & III Single Rate Thermal Type Breakers

**Rating:** from 40A to 150A; 12VDC.

**Operating Temperature:** -25°F(-32°C) to 180°F(82°C).

**Storage Temperature:** -30°F(-34°C) to 300°F(149°C).

**Applications:** Typically used in auxiliary and accessory circuits - trucks, buses, RV's and marine applications. Others might include battery charges and DC audio systems. Sealed for engine compartment and bilge area applications.

**Housing:** Thermoset plastic; UL rated 94VO; 311°F (155°C).

**Mounting:** Panel or surface.

**Indicator:** Series 54-870 (Type III) have a unique reset mechanism which provides visible indication of tripped condition. Splash Proof, Dust Proof.

**Operating Temperature:** -25°F(-32°C) to 180°F(82°C).

**Storage Temperature:** 15° to 250° F, (Available in other amperages upon request - 50 to 150 Amps).

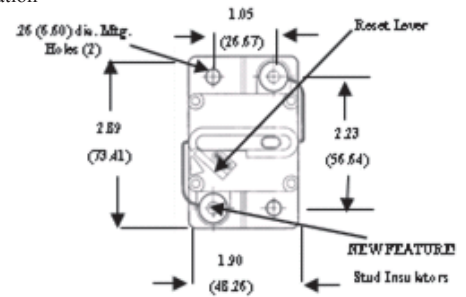
**Approvals:** Complies with SAE Standard J1625.

Ampere Rating	Type I Auto Reset Surface Mount	Type I Auto Reset Panel Mount
60	54-850PL	*
80	54-853PL	*
100	54-851PL	54-861PL
120	54-854PL	*
150	54-852PL	*

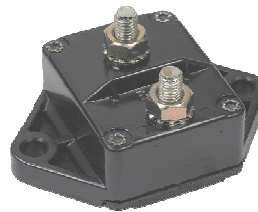
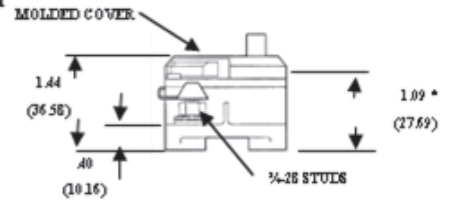
Ampere Rating	Type III Switchable Manual Reset Surface Mount	Type III Switchable Manual Reset Panel Mount
60	54-870PL	*
80	54-873PL	*
100	54-871PL	*
120	54-874PL	*
150	54-872PL	*

Manual trip push button on Series 54-870PL. Open circuit indication via reset lever position.

### SURFACE MOUNT

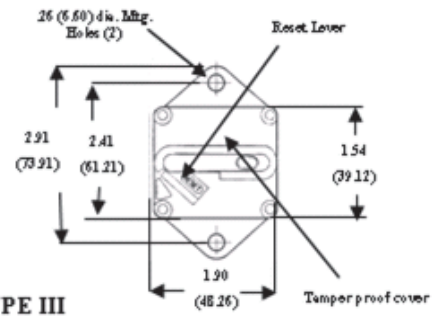


### TYPE III

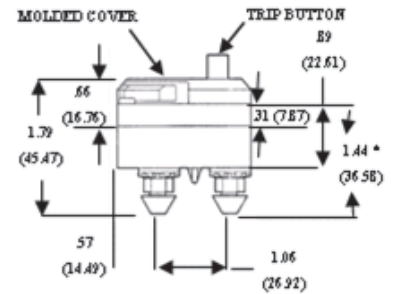


Type I Auto Reset

### PANEL MOUNT



### TYPE III



\* Overall Heights of Series



Type III Switchable

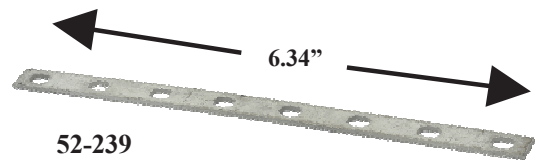
## MOUNTING BRACKETS

Rugged steel brackets with detents permit simple snap-in of 54-115 thru 54-150 (Type 1) series metal only circuit breakers.



52-241

No. Gangs	Part No.	Length	Mounting Hole Center
2	52-240	4.81"	4.00"
4	52-241	6.63"	5.81"
6	52-242	8.44"	8.44"
8	52-243	10.25"	10.25"



52-239

Bus bar for studded circuit breakers.  
.20 X .30 slots (.91 typ. On center)



52-249

7-Breaker Junction box

L 7.5" X W 3.75" X H 2.5"