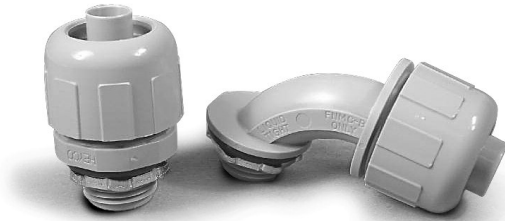


# LIQUID TIGHT CONNECTORS - NYLON/PVC

## Straight and Right Angle Non-Metallic Connectors



- UV rated
- Four Sizes for 3/8" to 2" Conduit
- No Disassembly Required to Install. Simply push Conduit or Tubing over Ferrule and tighten Sealing Nut
- No Threading of Conduit is Necessary. Lower your Installed Cost
- Connector may be reused. Turn Sealing Nut in Clockwise direction to Release Conduit
- Molded 6/6 Nylon. Non-Conductive, Non-Corrosive; Resistant to Fuels, Lubricants and most Chemicals

### Straight Connector

Black Connector with 'O' Ring & Steel Locknut Part #	Grey Connector with 'O' Ring & Steel Locknut Part #	For Conduit	Thread Size	K.O. Size Inch	CTN/PKG	STD PK
CCNY2500		¼	¼ NPT	¼	25	100
CCNY3750	CCNY3758	¾	¾ NPT	¾	25	100
CCNY5000	CCNY5008	½	½ NPT	½	25	100
CCNY7500	CCNY7508	¾	¾ NPT	¾	10	100
CCNY10000	CCNY10008	1	1 NPT	1	5	50
CCNY12500	CCNY12508	1¼	1¼ NPT	1¼	5	25
CCNY15000	CCNY15008	1½	1½ NPT	1½	2	10
CCNY20000	CCNY20008	2	2 NPT	2	2	10

### 90° Connector

Black Part #	Grey Part #	For Conduit	Thread Size	K.O. Size Inch	CTN/PKG	STD PK
CCNY37900	CCNY37908	¾	¾ NPT	¾	10	100
CCNY50900	CCNY50908	½	½ NPT	½	10	100
CCNY75900	CCNY75908	¾	¾ NPT	¾	10	100
CCNY10900	CCNY10908	1	1 NPT	1	5	50
CCNY125900	CCNY125908	1¼	1¼ NPT	1¼	5	25
CCNY150900	CCNY150908	1½	1½ NPT	1½	2	10
CCNY200900	CCNY200908	2	2 NPT	2	2	10

## Combination Straight – 90° Swivel Connector

**\*\*One connector does every angle !!**



Grey Part #	For Conduit	Thread Size	K.O. Size Inch	QTY/BOX
CCSW5008	N.M. Swivel L.T. Con. 1/2" GREY	½ NPT	½	10
CCSW7508	N.M. Swivel L.T. Con. 3/4" GREY	¾ NPT	¾	10
	SCREW-ON PVC RUBBER O-RING			

also available in black on request



## Screw-On Straight and 90° Non-Metallic Connectors

For use with non-metallic liquid-tight conduit, type B.  
 Produced from UV rated plastic for long outdoor life.



Straight Grey Connector with 'O' Ring & Steel Locknut Part #	90° Grey Connector with 'O' Ring & Steel Locknut Part #	For Conduit	Thread Size	K.O. Size Inch	STD PK
NMSC50	NMSC9050	½	½ NPT	½	100
NMSC75	NMSC9075	¾	¾ NPT	¾	100



G