

TUFF-SEAL™

LIQUA-SEAL® CONNECTORS



L Series Liqua-Seal® Connectors

The Tuff Seal family of Liqua-Seal Connectors are made of steel with a chromium zinc plating on the body, ferrule, locknut and clamp nut to prevent corrosion under the most adverse of conditions. They are ideally suited for use in applications such as food processing plants, chemical processing facilities, offshore rigs, pulp and paper factories, automation equipment, heavy-duty electrical motor housings and medical equipment.



Rated IP 65, Liqua-Seal Connectors are UL Listed and CSA Certified. Their watertight and oiltight design provides strain relief and reduces stress on components and termination points. Liqua-Seal Connectors are available in straight, 90° and 45° body styles and are also available with insulated throats and wire mesh grips.

NOTES

Dimensional information on page G-38 in Tuff-Seal Technical Reference

Metallic Liquid Tight Conduit Connectors



STEEL, STRAIGHT, EXTERNAL CONDUIT THREAD

PART NUMBERS

Conduit Size	Standard	Insulated Throat	Insulated With Mesh Grip	Mesh Length
3/8"	LMM-01	LMM-02	LMM-02-E	2 5/8"
1/2"	LMM-11	LMM-12	LMM-12-E	3 7/8"
3/4"	LMM-21	LMM-22	LMM-22-E	4 3/8"
1"	LMM-31	LMM-32	LMM-32-E	5 1/4"
1 1/4"	LMM-41	LMM-42	LMM-42-E	5 5/8"
1 1/2"	LMM-51	LMM-52	LMM-52-E	5 3/4"
2"	LMM-61	LMM-62	LMM-62-E	7 1/2"

STEEL, 45°, EXTERNAL CONDUIT THREAD

PART NUMBERS

Conduit Size	Standard	Insulated Throat	Insulated With Mesh Grip	Mesh Length
3/8"	LMA-01	LMA-02	LMA-02-E	2 5/8"
1/2"	LMA-11	LMA-12	LMA-12-E	3 7/8"
3/4"	LMA-21	LMA-22	LMA-22-E	4 3/8"
1"	LMA-31	LMA-32	LMA-32-E	5 1/4"
1 1/4"	LMA-41	LMA-42	LMA-42-E	5 5/8"
1 1/2"	LMA-51	LMA-52	LMA-52-E	5 3/4"
2"	LMA-61	LMA-62	LMA-62-E	7 1/2"

STEEL, 90°, EXTERNAL CONDUIT THREAD

PART NUMBERS

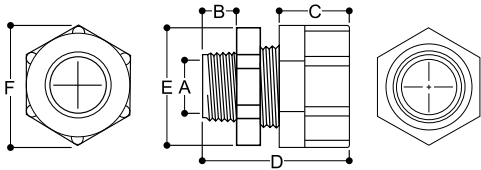
Conduit Size	Standard	Insulated Throat	Insulated With Mesh Grip	Mesh Length
3/8"	LML-01	LML-02	LML-02-E	2 5/8"
1/2"	LML-11	LML-12	LML-12-E	3 7/8"
3/4"	LML-21	LML-22	LML-22-E	4 3/8"
1"	LML-31	LML-32	LML-32-E	5 1/4"
1 1/4"	LML-41	LML-42	LML-42-E	5 5/8"
1 1/2"	LML-51	LML-52	LML-52-E	5 3/4"
2"	LML-61	LML-62	LML-62-E	7 1/2"

DIE-CAST ZINC

Part #	CONDUIT TYPE	FOR CONDUIT DIAMETER
LTM-38	STRAIGHT	3/8"
LTM-50	STRAIGHT	1/2"
LTM-75	STRAIGHT	3/4"
LTM-100	STRAIGHT	1"
LTM-125	STRAIGHT	1-1/4"
LTM-150	STRAIGHT	1-1/2"
LTM-200	STRAIGHT	2"
LTM-9038	90 DEGREE	3/8"
LTM-9050	90 DEGREE	1/2"
LTM-9075	90 DEGREE	3/4"
LTM-90100	90 DEGREE	1"
LTM-90125	90 DEGREE	1-1/4"
LTM-90150	90 DEGREE	1-1/2"
LTM-90200	90 DEGREE	2"

* For Type B conduit
 * Zinc die cast material

RSP AND RSPV STRAIGHT CORD GRIPS DIMENSIONS



Conduit Size	A Body Bore	B	C	D	E Body Hex.	F Nut Dia.
3/8"	0.44	0.49	0.70	1.63	0.94	0.94
1/2"	0.57	0.50	0.88	2.01	1.12	1.25
3/4"	0.76	0.56	0.88	2.10	1.38	1.50

Dimension A is the minimum Body Bore. Other dimensions are nominal.

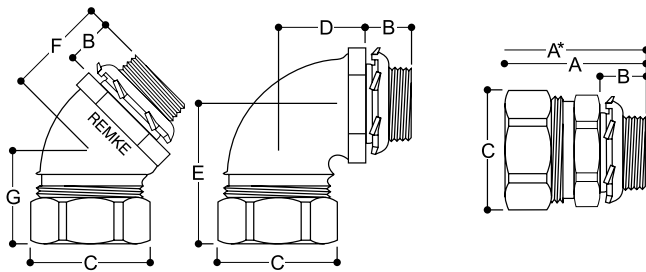
Dimension D is with the Nut snug but bushing uncompressed.

Dimension E is across the Straight Body hex. flats.

Dimension F is across Nut hex. flats.

Dimensions are approximate.

LIQUA-SEAL CONNECTOR DIMENSIONS



Conduit Size	Hub Size	A	A*	B	C Flats	C Corners	D	E	F	G
3/8"	1/2"	1.47	4.47	0.50	1.00	1.10	1.37	1.58	0.84	1.26
1/2"	1/2"	1.47	4.97	0.50	1.13	1.23	1.37	1.75	0.87	1.47
3/4"	3/4"	1.54	5.54	0.56	1.38	1.52	1.53	1.91	0.95	1.55
1"	1"	1.96	6.96	0.64	1.63	1.80	1.81	2.23	1.10	1.81
1 1/4"	1 1/4"	2.09	8.09	0.72	2.25	2.41	2.05	2.33	1.35	1.84
1 1/2"	1 1/2"	2.09	8.84	0.72	2.50	2.68	2.18	2.46	1.43	1.90
2"	2"	2.16	10.16	0.78	3.00	3.21	2.51	2.73	1.53	2.00

NOTE: Nominal Dimensions in Inches. A* Dimension is overall length of connector with wire mesh grip. Larger sizes are available. Contact factory.